

# Rollers

—Straight Type / Crown Type—(L=15~100)



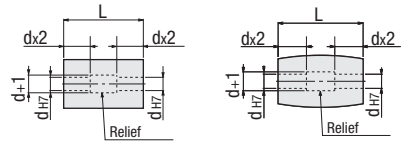
Type				M	S (Lining)	□
Straight		Crown				
L Selectable	L Specified	L Selectable	L Specified	Core		
ROLB	-	-	-	S45C	Black Oxide	-
ROLM	-	ROCM	-		Electroless Nickel Plating	-
ROLS	-	ROCS	-	SUS304	-	-
ROLA	-	ROCA	-	A5052	Clear Anodize	-
ROSS	ROFSS	ROCSS	-	SUS304	Silicon Rubber (Light Gray)	Shore A70
ROSA	ROFSA	ROCSA	-	A5052		Shore A50
ROJS	-	-	-	SUS304	Silicon Rubber (White)	Shore A70
ROJA	-	-	-	A5052		Shore A90
ROWS	-	-	-	SUS304	Heat Resisting Urethane (Red Brown) Operating Temperature: -110°C	Shore A90
ROTS	ROFTS	ROCTS	-	SUS304		NBR (Black)
ROTA	-	ROCTA	-	A5052	Urethane (Natural Color)	
RONA	-	ROCTA	-	A5052		Urethane (Natural Color)
ROUS	ROFUS	ROCUS	ROFCUS	SUS304	Urethane (Natural Color)	
ROUA	ROFUA	ROCUA	ROFCUA	A5052		Urethane (Natural Color)
ROGS	-	ROCGS	ROFCGS	SUS304	Urethane (Natural Color)	
ROGA	ROFGA	ROCGA	ROFCGA	A5052		Urethane (Natural Color)
ROHS	ROFHS	ROCHS	-	SUS304	Urethane (Natural Color)	
ROHA	ROFHA	ROCHA	ROFCHA	A5052		Urethane (Natural Color)

Urethane, Silicon Rubber and NBR are baked on roller outer diameter.

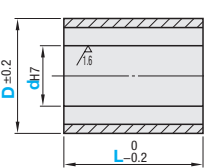
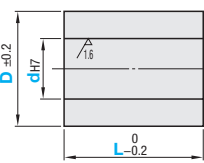
When  $L \leq dx3$ , hole d is machined from one direction.

When  $L > dx3$ , hole d is machined from both ends, shape is as shown below.

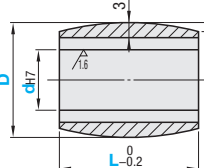
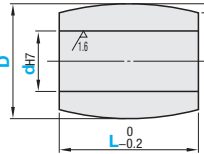
There may be no relief in some cases.



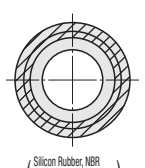
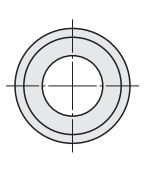
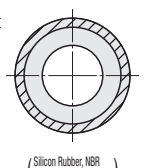
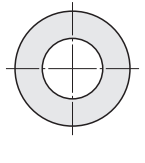
## Straight Type



## Crown Type



6.3 / (1.6)



## L Dimension Selectable Type

Part Number			D	dh7 Selection					L Selection						
Type															
Straight Core only ROLB ROLM ROLS ROLA ROSS ROSA ROJS ROJA ROWS Heat Resisting Urethane ROTS ROTA NBR RONA	Silicon Rubber	Urethane	20	8					15	20	25	30	40	50	
	ROUS	ROUS	25	8	10	12			15	20	25	30	40	50	
	ROUA	ROUA	30	8	10	12	15		15	20	25	30	40	50	
	ROGS	ROGS	35		10	12	15	20		20	25	30	40	50	
	ROCUA	ROCUA	40		10	12	15	20		20	25	30	40	50	
	ROCSA	ROCSA	50			12	15	20	25		25	30	40	50	100
	ROCGA	ROCGA	60			12	15	20	25	30		30	40	50	100
	ROCHA	ROCHA	80			15	20	25	30			40	50	100	

D60 and D80 are not available for ROSS, ROSA, ROJS, ROJA, ROWS, ROCSS, ROCSA, RONA and ROCNA.

## L Dimension Specified Type

Part Number		D	dh7 Selection					L 1mm Increment	
Type									
Straight Silicon Rubber ROFSS ROFSA Heat Resisting Urethane ROFGA ROFHS ROFTS	Urethane	20	8						
	ROFUS	25	8	10	12		16~49		
	ROFUA	30	8	10	12	15			
	ROFHA	35		10	12	15	20		
	ROFHA	40		10	12	15	20		
Crown Urethane ROFCUS ROFCUA ROFCGS ROFCGA ROFCHA	Urethane	50			12	15	20	25	
	ROFCUS	60			12	15	20	25	30
	ROFCUA	80			15	20	25	30	
	ROFCGS								
	ROFCGA								

D60 and D80 are not available for ROFSS, ROFSA. Urethane may discolor with time, but there is no effect on properties.