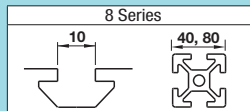


# Economy Type Post-Assembly Insertion Screws / Pre-Assembly Insertion Screws for Aluminum Extrusions

For 8 Series (Slot Width 10mm)



Economy Type of Post-Assembly Insertion Screw is offered. (This type is priced approx. 40% lower than HATLSN8-8 of Post-Assembly Insertion Screw.) **Tightening Torque** **P552**

## Economy Type Post-Assembly Insertion Screw

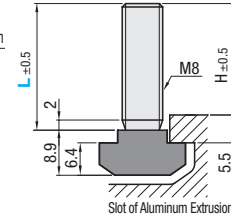
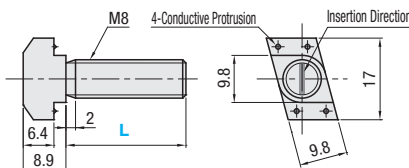
### HATL8-8

Effective Length of Economy Type Post-Assembly Insertion Screws



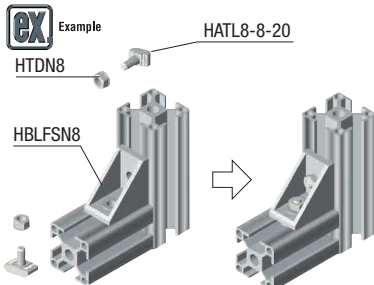
**M** Material SWRCH35K  
(Carbon Steel Wire Rod)

\* Electrically conductive **S** Surface Treatment: Trivalent Chromate **RoHS10**



Part Number	L	H	Applicable Extrusion (Series)	Reference Tightening Torque (N·m)	Unit Price	Volume Discount Rate
					1-29 pc(s).	30-149 150-600
<b>HATL8-8</b>	20	17.0	8 Series	23.5		
	25	22.0	8-45 Series			

Ordering Example **Part Number** - **L**  
Example **HATL8-8** - **20**



## Post-Assembly Insertion Screw

### HATLSN8-8

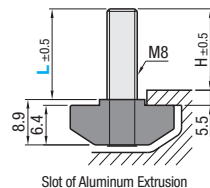
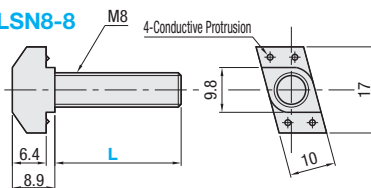
Effective Length of Post-Assembly Insertion Screws



**M** Material Nut Screw SUS316 Equivalent (Sintered) SUS304

\* Electrically conductive

**RoHS10**



Part Number	L	H	Applicable Extrusion (Series)	Reference Tightening Torque (N·m)	Unit Price	Volume Discount Rate
					1-29 pc(s).	30-149 150-600
<b>HATLSN8-8</b>	20	17.0	8 Series	23.5		
	25	22.0	8-45 Series			

**Part Number** - **L**  
**HATLSN8-8** - **20**

## Pre-Assembly Insertion Screw

### HNTLSN8-8

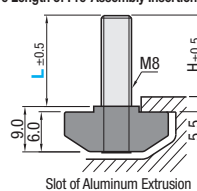
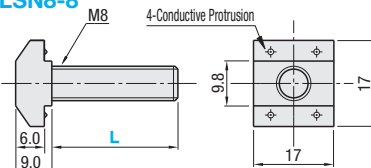
Effective Length of Pre-Assembly Insertion Screws



**M** Material Nut Screw SUS316 Equivalent (Sintered) SUS304

\* Electrically conductive

**RoHS10**



Part Number	L	H	Applicable Extrusion (Series)	Reference Tightening Torque (N·m)	Unit Price	Volume Discount Rate
					1-29 pc(s).	30-149 150-600
<b>HNTLSN8-8</b>	20	17.5	8 Series	23.5		
	25	22.5	8-45 Series			

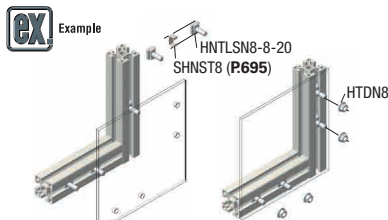
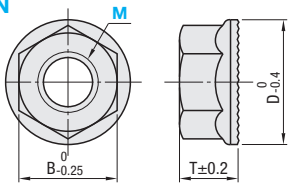
**Part Number** - **L**  
**HNTLSN8-8** - **20**

## Flanged Nuts

### HTDN



**RoHS10**  
**M** Material: SUS304



Part Number	Type	M	B	T	D	Unit Price	Volume Discount Rate
						1-499 pc(s).	500-999 1000-1500
<b>HTDN</b> (Stainless Steel)	4	7	4.2	10			
	5	8	5.5	12			
	6	10	6.0	13			
	8	12	7.5	17			

Ordering Example **Part Number**  
Example **HTDN6**