

# Thick Hinge Bases

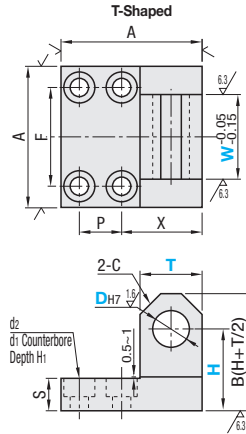
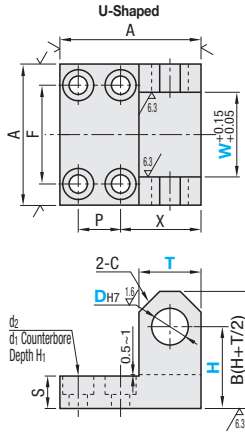
## L-Shaped Fulcrum Type

■ **Features:** Prevent interference by shifting Fulcrum.



Type		Material	Surface Treatment
U-Shaped	T-Shaped		
HGLJB	HGLKB	S45C	Black Oxide
HGLJM	HGLKM	Equivalent	Electroless Nickel Plating
HGLJS	-	SUS304	-

25 / (√6.3 / √1.6)



RoHS10

Part Number	Type	DH7	T Selection	W 1mm Increment	H 1mm Increment	A	F	P	X	S	d2	d1	H1	C	Unit Price					
															U-Shaped		T-Shaped			
															HGLJB	HGLJM	HGLJS	HGLKB	HGLKM	
U-Shaped HGLJB HGLJM HGLJS	4	12	4~8	20~30	25	12			18.5	7.5	4.5	8	4.5	3						
	5	16	5~10	21~31	28	20			22						4					
	6	16	6~12	25~35	28	12			22						4					
	8	19	8~16		38	25			28.5	9.5	5.5	9.5	5.5	5	5					
	10	22	10~20		45	30	12		27.5						6					
	12	25	12~30	30~40	50	35			28.5						6					
13	25	13~30		50	35			28.5						7						
14	30	14~30	35~45	60	40			35						7						
15	30	14~30		60	40			37.5	11.5	6.5	11	6.5	7	8						
16	30	14~30		60	40			37.5						8						
20	38	20~35	40~50	65				37.5						8						
25	38	25~35		70	45	16	46	16		9	14	9	11	11						



Ordering Example  
**Part Number** - **T** - **W** - **H**  
 HGLKM16 - T30 - W25 - H42  
 HGLKB10 - T19 - W15 - H35

■ **List of Diameter (DH7), Thickness (T) and Thickness on One Side**

DH7	Hinge Bases Standard (P.1585)		Hinge Bases Thick			
	T	Thickness on One Side (T-DH7)/2	T	Thickness on One Side (T-DH7)/2	T	Thickness on One Side (T-DH7)/2
4	9	2.5	12	4	-	-
5	12	3.5	16	5.5	19	7
		3		5		6.5
6	12	3	16	5	19	6.5
8	16	4	19	5.5	22	7
10	16	3	19	4.5		6
12	19	3.5	22	5	25	6.5
13	19	3	22	4.5		6
14	19	4	22	5.5		8
15	22	3.5	25	5	30	7.5
16	22	3	25	4.5		7
20	25	2.5	30	5	38	9
25	30	2.5	38	6.5	-	-

■ **Features:** The hole's thickness on one side is selectable by working load.