

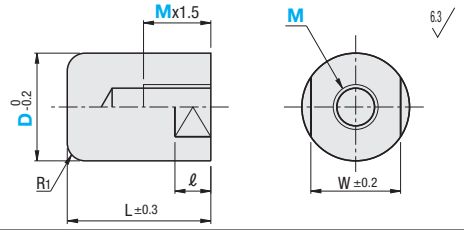
# Resin Pushers

## Thread Insert



Type	Material	Color	Thread
JPHJ	Polyacetal	White	Thread Insert (SUS304)
JPHM	MC Nylon Electrical Conductivity CDR2	Black	
JPHMC	MC Nylon	Blue	

Properties of polyacetal and MC nylon, see P1557.



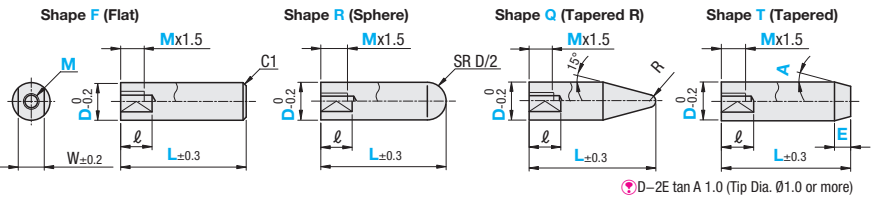
Part Number Type	D	M Selection								L	R1	ℓ	W	Unit Price		
														JPHJ	JPHM	JPHMC
JPHJ JPHM JPHMC	8	3	4							12	1	8	7			
	10	3	4	5					15	8						
	12		4	5	6				16	10						
	15		5	6	8S	8				20	10	14				
	16		6	8S	8				25			17				
	18		6	8S	8	10S	10	12S	12	25	3	15	27			
	20		8S	8	10S	10	12S	12	12M					35	20	37
	30		10S 10 12S 12 12M 14S 18S						35							
	40		10S 10 12S 12 12M 14S 18S						45							

8S, 10S, 12, 12S, 14S and 18S are fine thread pitch. For thread details, refer to the right. 12M is course thread pitch.



Type	Material	Color	Thread
JPFJ	Polyacetal	White	Thread Insert (SUS304)
JPFM	MC Nylon Conductive CDR2	Black	
JPFMC	MC Nylon	Blue	

Properties of polyacetal and MC nylon, see P953.



D-2E tan A 1.0 (Tip Dia.  $\phi$ 1.0 or more)

Part Number Type	Shape	D	L 1mm Increment	M Selection						Tapered Type only		R	ℓ	W	
										E 0.5mm Increment	A 1° Increment				
JPFJ (Polyacetal) JPFM (MC Nylon Conductive CDR2) JPFMC (MC Nylon)	F R Q* T	6	10(17)~50	3							5.0≤E E≤Mx3	1-45°	1		5
		8	12(19)~50	3 4					1.5	8			7		
		10	15(22)~50	3 4 5						8					
		12	16(27)~100	4 5 6						10					
		15	20(35)~100	5 6 8S 8						2	10	14			
		16		6 8S 8								17			
		18	25(40)~100	6 8S 8 10S 10						3	15	27			
		20		8S 8 10S 10 12S 12 12M								20			
		30	35(63)~100	10S 10 12S 12 12M 14S 18S											
		40	45(87)~100	10S 10 12S 12 12M 14S 18S											

\* Dimensions in ( ) are the minimum L dimensions when shape Q is selected. 8S, 10S, 12, 12S, 14S and 18S are fine thread pitch. For thread details, refer to the right. 12M is course thread pitch.



Type	Shape	D	L	M	E	A
JPFJ	R	12	40	6		
JPFMC	T	12	35	5	E8	A15

D	Unit Price					
	L Min. ~ 59			L60-100		
	JPFJ	JPFM	JPFMC	JPFJ	JPFM	JPFMC
6						
8						
10						
12						
15						
16						
18						
20						
30						
40						

M	MxPitch
3	M3x0.5
4	M4x0.7
5	M5x0.8
6	M6x1.0
8S	M8x1.0
8	M8x1.25
10S	M10x1.25
10	M10x1.5
12S	M12x1.25
12	M12x1.5
12M	M12x1.75
14S	M14x1.5
18S	M18x1.5