

Attachments for Pneumatic Grippers/ Fingers for Pneumatic Grippers (Direct Mounting Type)

Flat Shape

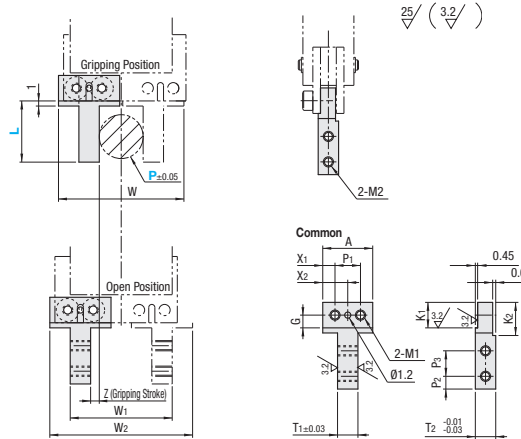
Attachments for Pneumatic Grippers



RoHS10

	Type	Material	Surface Treatment	Accessory
Fixed	ACHAT	S45C	Tuffride®	Hex Socket Head Cap Screw: 2 pcs.
Configurable	ACHATW		Electroless Nickel Plating	Locating Pin: 1 pc.

Ⓜ The locating pin is press-fit into the pin hole before shipping.



Common Dimension

Gripper (Nominal)	T1	T2	P1	P2	P3	G	K1	K2	M1	M2	d
4	4	4	5	2.5	5	2.5	5	6.5	M2	M2	2.4
6	5.2	5	6	3	5.7	3	5.5	6.7	M3	M2.5	2.9

- Ⓜ P indicates points where the workpiece is gripped.
- Ⓜ Gripping Position indicate when air is in Port A.
- Ⓜ The closing allowance is 0.3mm on each side.
- Ⓜ The Configurable Type may have a centering hole on end faces.

Fixed

Part Number Type	Gripper (Nominal)	L	P	W	W1	W2	Z	A	X1	X2	Applicable Gripper	Unit Price
ACHAT	4	12	8.6	22.4	20	25.8	1.7	9.8	2.4	4.9	ACHK4-□	
	6	14	7.4	24.4	23.2	29.8	2.7	11.8	2.9	5.9	ACHK6-□	

Ⓜ Unit Price is the price per set (both sides).

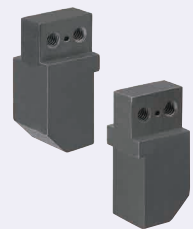
Ordering Example: Part Number - L - P
 ACHAT4 - L13 - P8.6

Configurable

Part Number Type	Gripper (Nominal)	L 1mm Increment	P Selection	W	W1	W2	Z	A	X1	X2	Applicable Gripper	Unit Price
ACHATW	4	12-18	0.6 8.6 16.6	24.6	P+11.4	28	1.7	12	3.5	6	ACHK4-□ ACHE4-N	
	6	14-25	0.6 7.4 14.2	24.6	P+15.8	30	2.7	12	3	6	ACHK6-□ ACHE6-N	

Ⓜ Unit Price is the price per set (both sides).

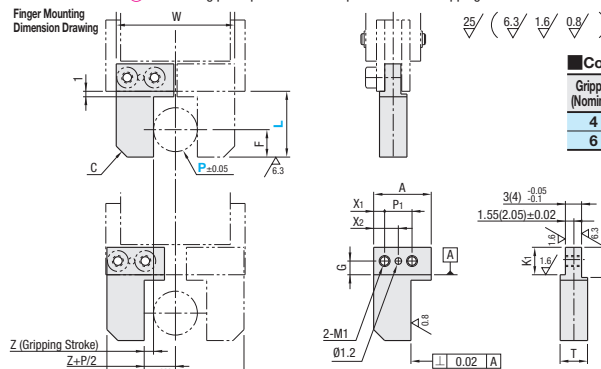
Fingers for Pneumatic Grippers



RoHS10

Type	Material	Surface Treatment	Accessory
YFTB	S45C	Black Oxide	Hex Socket Head Cap Screw: 2 pcs. Locating Pin
YFTM		Electroless Nickel Plating	

Ⓜ The locating pin is press-fit into the pin hole before shipping.



Ⓜ Features: Flat-shaped fingers with a 0.3mm fastening allowance on each side. Workpiece weight and shape can be confirmed by specifying P Dimension.

Common Dimension

Gripper (Nominal)	P1	A	X1	X2	G	K1	K2	M1
4	5	10.5	2	4.5	2.5	5	5.5	M2
6	6	11.5	2.5	5.5	3	5.5	6.7	M3

Gripper (Nominal)	Applicable Gripper
4	ACHK4-N-ACHK4-D-ACHE4-N
6	ACHK6-N-ACHK6-D-ACHE6-N

Ⓜ () for 6mm Stroke

Gripper Body: 4mm Stroke (One-sided Stroke: 2mm)

Part Number Type	Gripper (Nominal)	P Reference Pin 0.1mm Increment	L 1mm Increment	F	C	T	Z	W	W1
YFTB YFTM	4	3.0-4.0	8-29	2					
		4.1-5.0	8-30	2.5					
		5.1-6.0	9-30	3					
		6.1-7.0	9-31	3.5	3	5	1.7	21.6	25
		7.1-8.0	10-31	4					
		8.1-9.0	11-32	4.5					
		9.1-10.0	12-32	5	2				

Gripper Body: 6mm Stroke (One-sided Stroke: 3mm)

Part Number Type	Gripper (Nominal)	P Reference Pin 0.1mm Increment	L 1mm Increment	F	C	T	Z	W	W1
YFTB YFTM	6	3.0-4.0	8-44	2					
		4.1-5.0	8-45	2.5					
		5.1-6.0	9-45	3					
		6.1-7.0	9-46	3.5	3	6	2.7	23.6	29
		7.1-8.0	10-46	4					
		8.1-9.0	11-47	4.5					
		9.1-10.0	12-47	5	2				

Ordering Example: Part Number - P - L
 YFTB4 - P5.5 - L11



Example

The length and width of the attachments are configurable.

