

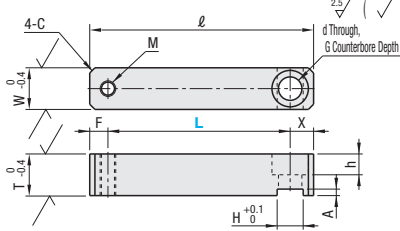
Rotary Clamp Cylinder Arms / Brackets / Guides

Rotary Clamp Cylinder Arms



RoHS 10

Type	Material	Surface Treatment
RCLA	SS400	-
RCLAB	S45C	Black Oxide
RCLAM	S45C	Electroless Nickel Plating



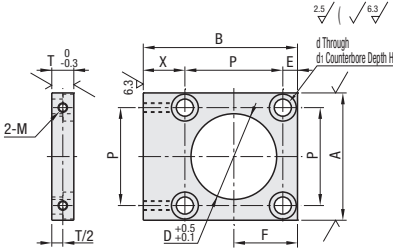
Part Number	Type	No.	L 1mm Increment	W	T	H	G	d	h	A	X	M	F	C	ℓ	Unit Price		
																RCLA	RCLAB	RCLAM
RCLA RCLAB RCLAM	20	15~100	16	16	10	14	9	9	9	6	7	2	L+16					
	25	15~100	16	16	10	14	9	9	3	9	6	7	L+16					
	32	20~160	20	20	14	17.5	11	11	4	12	8	10	L+22					
	40	20~160	20	20	14	17.5	11	11	4	12	8	10	L+22					
	50	25~200	22	22	17	20	14	13	4	13	10	10	L+23					

Rotary Clamp Cylinder Brackets



RoHS 10

Type	Material	Surface Treatment
RCYB	SS400	-
RCYBB	S45C	Black Oxide



Part Number	Type	No.	T	D	A	P	X	B	E	F	M	d	d1	h1	Unit Price	
															RCYB	RCYBB
RCYB RCYBB	20	9	24	38	25.5	18.25	P+E+X	6.25	19	M4	6.5	11	6.5			
	25	9	24	44	28	19	P+E+X	6	20	M4	6.5	11	6.5			
	32	9	30	50	34	18	P+E+X	8	25	M4	6.5	11	6.5			
	40	9	35	60	40	19	P+E+X	10	30	M4	6.5	11	6.5			
	50	12	37	65	50	26.5	P+E+X	7.5	32.5	M6	9	14	9			

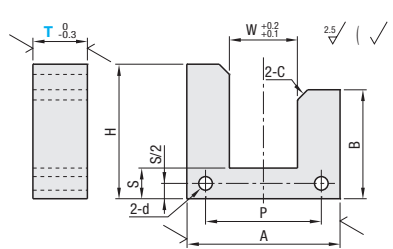
No. indicates applicable Rotary Clamp Cylinder Tube I.D.

Rotary Clamp Cylinder Guides



RoHS 10

Type	Material	Surface Treatment
RCYG	SS400	-
RCYGB	S45C	Black Oxide



Part Number	Type	No.	T Selection	W	S	H	B	A	P	C	d	Unit Price	
												RCYG	RCYGB
RCYG RCYGB	20-21	9	12 16	16	9	30	22	38	25.5				
	20-31	9	12 16			40	32						
	25-21	9	12 16	16	9	30	22	44	28				
	25-31	9	12 16			40	32						
	32-25	9	12 16	20	9	33	22	50	34	3	4.5		
	32-35	9	12 16			43	32						
	40-25	9	12 16	20	9	33	21	60	40				
	40-35	9	12 16			43	31						
	50-40	9	12 16	22	12	50	34	65	50	4	6.5		
	50-70	9	12 16			80	64						

No. indicates applicable Rotary Clamp Cylinder Tube I.D / Stroke.

Ordering Example
 Part Number - L, T
 RCLA32 - 100
 RCYG40-25 - 12
 RCYB32

Alterations
 Part Number - L - (ZA, PC, TA, XA)
 RCLA32 - 100 - ZA6
 RCLAM50 - 150 - XA

Part Number - (MT)
 RCYB32 - MT4

Alterations	Counterbore Hole Change	Mounting Hole Addition	Through Hole Change	X Length Change	Tapped Hole for Stopper
	ZA	PC	TA	XA	MT
Code	ZA	PC	TA	XA	MT
Spec.	Change from a tapped hole to a counterbored hole. M ZA d2 D h2 6 6 6.6 11 6.6 8 8 9 14 9 10 10 11 17.6 11 Cannot be combined with Through Hole Change (TA) Ordering Code ZAB Applicable to Arms (RCLA□) only	A tapped hole to be added. Mk2sPCsL-Gx2 1mm Increment Ordering Code PC20 Cannot be combined with Counterbore Hole Change (ZA). If combined with TA, a mounting hole will be added after the change. Applicable to Arms (RCLA□) only	Change from a tapped hole to a through hole. 0.5mm Increment No. TA 20, 25 4.0~12.0 32, 40, 50 4.0~14.0 Cannot be combined with Counterbore Hole Change (ZA). Ordering Code TA4.5 Applicable to Arms (RCLA□) only	X dimension to be changed. No. X 20 25 25 30 32 35 40 40 50 45 Ordering Code XA Applicable to Arms (RCLA□) only	A tapped hole for the stopper is added. No. E2 MT 20 3 M3 M4 25 4 M3 M4 M5 32 5 M3 M4 M5 40 6 M3 M4 M5 M6 50 7 M4 M5 M6 M8 Ordering Code MT4 Applicable to Bracket (RCYB□) only.

