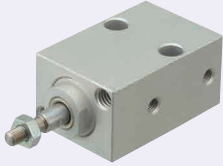


Small Cylinders / Panel Mount Single Acting

Tip Shape Selectable

Small Cylinders Tip Shape Selectable

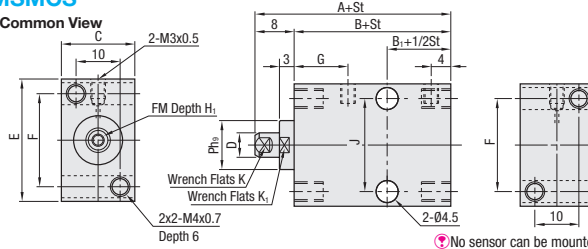


RoHS10

The shared diagram of Rod Tip Shape in the right-hand box is for the Standard Stroke Type (MSMCN) available on our website. Please visit our website at : <http://fa.mitsumi.jp/hp-item.jsp>

MSMCS

Common View



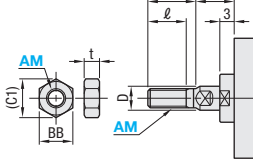
Small Cylinder : Basic Specifications

Tube I.D. (mm)	6-10
Operating Type	Double Acting
Applicable Fluid	Air
Min. Operating Pressure (MPa)	0.2
Max. Operating Pressure (MPa)	0.7
Pressure Resistance (MPa)	1.0
Operating Temp. Range (°C)	5-60
Piston Speed (mm/s)	50-500
Cushion Mechanism	No
Stroke Tolerance (mm)	0-+0.5
Lubrication	Lubrication Free
Pipe Connection Bore Dia.	M3x0.5

No sensor can be mounted.

Select Tip Shape for Selectable Type.

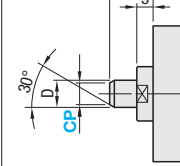
Shape A



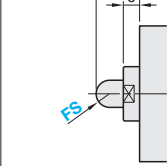
Accessory : Nut 1 pc. (SUS304)

AM	BB	(C1)	t
3	5.5	6.4	1.8
4	7	8.1	2.4
5	8	9.2	3.2

Shape C



Shape F



Tube I.D. (mm)	A	B	B1	E	C	D	F	FM	G	H1	J	K	K1	Ph9
6	28	20	6.5	20		4	15	M2.5x0.45	11	5	14	3.5	9	10
8	30	22	8	25	15	5	19	M3x0.5	10	6	19	4	9.5	
10						6					5	11	12	

Part Number	St Stroke (mm)	Piston Rod Tip Shape				Body Price				Surcharge for Piston Rod Tip Shape					
		Shape A AM	Shape C CP	Shape F FS	Shape F FS	St Stroke (mm)	20	25	30	AM	CP	FS			
MSMCS	6	5	10	15	20	3	4	4	2.5						
	8	5	10	15	20	3	4	4	2.5						
	10	5	10	15	20	3	4	4	2.5						

Features: Tip shape of cylinder rod is selectable.

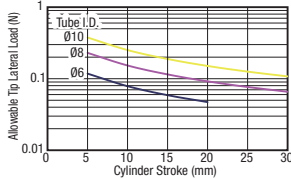
Ordering Example: **MSMCS8** - **10** - **AM4**



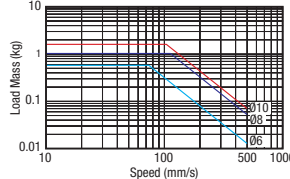
It can be installed in four directions.
 Example ① Top Mount ② Front Mount ③ Bottom Mount ④ Back Mount



Small Cylinder: Allowable Tip Lateral Load Table



Small Cylinder: Allowable Kinetic Energy Table



See P.1483 for the theoretical reference speed.

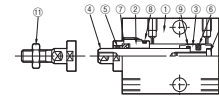
Dimensions for Shape A Selection

Tube I.D. (mm)	ℓ	L1	F
6	6	16	8
8	8	18	10
10	10	21	13

Small Cylinder : Theoretical Output Unit : (N)

Tube I.D. (mm)	Operating Direction	Operating Pressure (Mpa)					
		0.2	0.3	0.4	0.5	0.6	0.7
6	Push	5.7	8.5	11.3	14.1	17.0	19.8
	Pull	3.1	4.7	6.3	7.9	9.4	11.0
8	Push	10.1	15.1	20.1	25.1	30.2	35.2
	Pull	6.1	9.2	12.3	15.3	18.4	21.4
10	Push	15.7	23.6	31.4	39.3	47.1	55.0
	Pull	10.1	15.1	20.1	25.1	30.2	35.2

Small Cylinders Tip Shape Selectable Structural Diagram



Small Cylinder : Part List

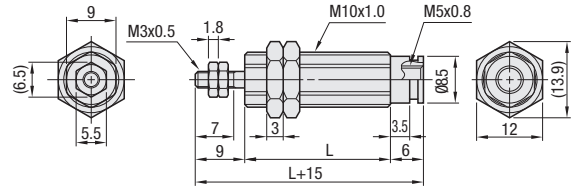
Number	Part Name	Material	Surface Treatment and Others
①	Main Body	Aluminum	Clear Anodize
②	Rod Cover	Aluminum	Clear Anodize
③	Piston	Ø6 Stainless Steel	
④	Piston Rod	Ø8,10 Aluminum	Clear Anodize
⑤	Bearing	PTFE Type	
⑥	Piston Gasket	NBR	
⑦	Rod Gasket	NBR	
⑧	Body Gasket	NBR	
⑨	Piston Gasket	NBR	Ø8 and Ø10 only
⑩	Mounting Screw	Stainless Steel	Ø8 and Ø10 only
⑪	Nut	Stainless Steel	For Threaded Type only

Panel Mount Single Acting



RoHS10

MSPCM (Panel Mount Single Acting)

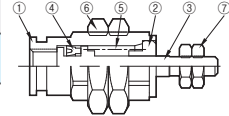


MSPCM Basic Specifications

Tube I.D. (mm)	6
Operating Type	Single Acting Outstroke Type
Applicable Fluid	Air
Min. Operating Pressure (MPa)	0.2
Max. Operating Pressure (MPa)	0.7
Pressure Resistance (MPa)	1.0
Operating Temp. Range (°C)	5-60
Piston Speed (mm/s)	50-500
Cushion Mechanism	No
Stroke Tolerance (mm)	0-+1.0
Lubrication	Lubrication Free
Pipe Connection Bore Dia.	M5x0.8

Part Number	St Stroke (mm)	L	Unit Price
MSPCM	5	12.5	
	10	19.5	
	15	26.5	

MSPCM Structure



MSPCM : Parts List

Number	Part Name	Material	Surface Treatment
①	Main Body	C3604-CD	Electroless Nickel Plating
②	Cover	C5441B	
③	Piston Rod	SUS303	
④	Piston Gasket	NBR	
⑤	Spring	SWP	
⑥	Body Nut	C3604-CD	Electroless Nickel Plating
⑦	Rod Nut	C3604-CD	Electroless Nickel Plating

Ordering Example: **MSPCM6** - **5**

