

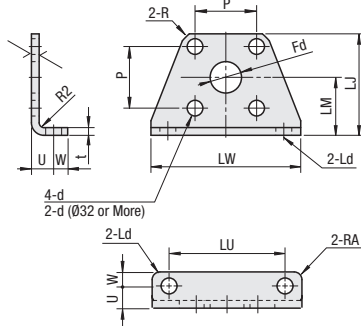
Brackets for Compact Cylinders

Foot Brackets



RoHS 10

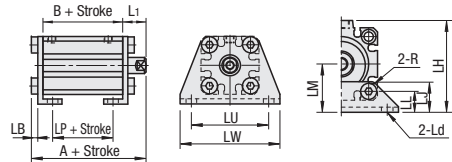
Type	Material	Surface Treatment
CFKPB	SPCC	Black Oxide
CFKPM		Electroless Nickel Plating



25° (✓)

Dimensions when cylinder is mounted.

Ø32 or More



LB refers to dimensions with hex socket low head cap screws.

Part Number		*A	B	d	Fd	*L1	Ld	LB	LP	t	LU	LJ	LM	LW	P	R	RA	U	W	LH	LL	Unit Price	
Type	Tube I.D. (mm)																					CFKPB	CFKPM
CFKPB CFKPM	12	50.8(30.3)	22	4.5	10	24(3.5)	4.5	2.8	10	2	34	29.5	17	44	15.5	16	2	8	4.5	-	-		
	16	52.3(30.3)	22	4.5	12	25.5(3.5)	4.5	2.8	10	2	38	33.5	19	48	20	19	2	8	5	-	-		
	20	65.2(41.2)	29.5	6.5	14	28.5(4.5)	6.6	4	17.5	3.2	48	42	24	62	25.5	23.5	3.2	9.2	5.8	-	-		
	25	72.2(44.7)	32.5	6.5	16	32.5(5)	6.6	4	17.5	3.2	52	46	26	66	28	26	3.2	10.7	5.8	-	-		
	32	78.7(47.2)	33	6.5	-	38.5(7)	6.6	4	17	3.2	57	19	30	71	34	3.2	3.2	11.2	5.8	57	13		
	40	85.2(53.7)	39.5	6.6	-	38.5(7)	6.6	4	23.5	3.2	64	18.5	33	78	40	3.2	3.2	11.2	7	64	13		
	50	92.2(56.7)	40.5	9	-	43.5(8)	9	5	17.5	3.2	79	21	39	95	50	3.2	3.2	14.7	8	78	14		

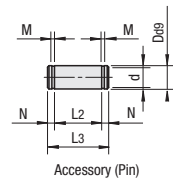
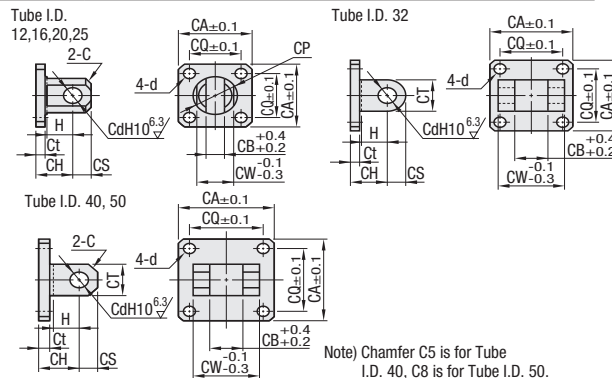
(*) dimensions are for bracket mounted MSCCN (Standard Stroke Type).

U-Shaped Clevis Mount Brackets

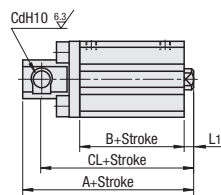


RoHS 10

Type	Material	Surface Treatment	Accessory
CTKB	S45C	Black Oxide	Pin 1 pc. (S45C Electroless Nickel Plating 40 ~ 45HRC)
CTKM		Electroless Nickel Plating	Pivot Shafts 2 pcs. (Spring Steel)



Dimensions when cylinder is mounted.



Note) Chamfer C5 is for Tube I.D. 40, C8 is for Tube I.D. 50.

Part Number		*A	B	*CL	*L1	Cd	CH	CS	H	Ct	CA	CQ	CB	CW	CT	CP	C	d	Unit Price		
Type	Tube I.D. (mm)																		CTKB	CTKM	
CTKB CTKM	12	56(45.5)	22	50.0(39.5)	14(3.5)	5	14	6	7	4	25	15.5	5	10	-	12	C2	4.5			
	16	58.5(46.5)	22	52.5(40.5)	15.5(3.5)	5	15	6	10	4	29	20	6.5	12	-	14	C2	4.5			
	20	75(61)	29.5	66.0(52.0)	18.5(4.5)	8	18	9	12	5	36	25.5	8	16	-	20	C3	6.5			
	25	85(67.5)	32.5	75.0(57.5)	22.5(5)	10	20	10	14	5	40	28	10	20	-	24	C3	6.5			
	32	91.5(70)	33	81.5(60.0)	28.5(7)	10	20	10	14	5	45	34	18	36	20	-	-	-	6.5		
	40	100(78.5)	39.5	90(68.5)	28.5(7)	10	22	10	14	6	52	40	18	36	20	-	-	C5	6.5		
	50	116(90.5)	40.5	102(76.5)	33.5(8)	14	28	14	20	7	64	50	22	44	28	-	C8	8.5			

(*) dimensions are for bracket mounted MSCCN (Standard Stroke Type).



Ordering Example

Part Number

CFKPB32
CTKB20

Accessories of U-Shaped Clevis Brackets

No.	Dø9	d	L2	L3	N	M	Retaining Ring
12	5	4.8 ⁰ _{-0.04}	10.2	14.6	2.2	0.7 ^{+0.10} ₀	C Type for Shaft 5
16			12.2	16.6			
20	8	7.6 ⁰ _{-0.06}	16.2	21	2.4	0.9 ^{+0.10} ₀	C Type for Shaft 8
25			20.2	25.6			
32	10	9.6 ⁰ _{-0.09}	36.2	41.6	2.7	1.15 ^{+0.14} ₀	C Type for Shaft 10
40							
50	14	13.4 ⁰ _{-0.11}	44.2	50.6	3.2		C Type for Shaft 14