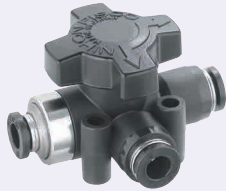


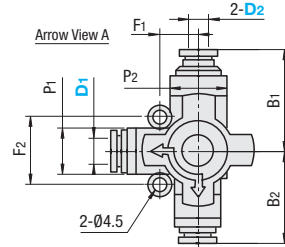
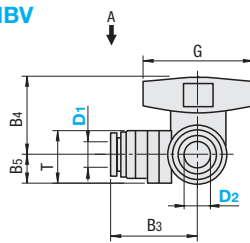
# Change Valves / One-Touch Articulated Connectors / Resin Connectors

## Change Valves



RoHS 10

### BVHBV



Material Resin Body: Glass Fiber Filled PBT Ball, Guide Ring: Brass (Electroless Nickel Plating) O-Ring: Nitrile Rubber

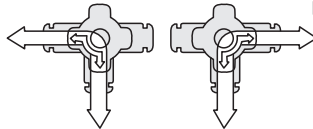
Part Number		Tube O.D. (mm)		B <sub>1</sub>	B <sub>2</sub>	B <sub>3</sub>	B <sub>4</sub>	B <sub>5</sub>	T	F <sub>1</sub>	F <sub>2</sub>	P <sub>1</sub>	P <sub>2</sub>	G	Effective Sectional Area (mm <sup>2</sup> )	Mass (g)	Unit Price	Volume Discount Rate
Type	Tube O.D. (mm) D <sub>1</sub>	D <sub>2</sub>															1 - 9 pc(s).	10-30
BVHBV	6	6	26.9	28.8	27	23.8	8.9	16.2	12	20	14.5	17.8	34.5	9	50			
	8	8	26.9	28.8	26.9	23.8	8.9	16.2	12	20	14.5	17.8	34.5	11	53			
	10	10	28.5	28.7	26.9	23.8	8.9	16.2	12	20	14.5	17.8	34.5	17	50			
	12	12	36.1	36.5	34.8	28	11.9	22.4	15	25	21	23.8	44	24	122			
			36.1	36.5	35	28	11.9	22.4	15	25	21	23.8	44	24.5	125			
			36.6	36.7										34.5	117			

### Features

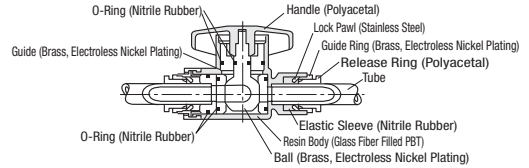
- Changes the direction of air passage by 90°.
- Resin body is compact and lightweight.
- Easy to handle for changing air passage.

### Specifications

Applicable Fluid	Air
Operating Pressure Range	0~0.7MPa
Operating Vacuum Level	-100kPa
Operating Temperature Range	0 ~ 60°C (No Freezing)



### Structure Diagram



## One-Touch Articulated Connectors - Male & Female Set

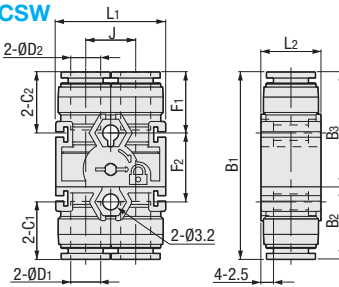


Material Polyacetal

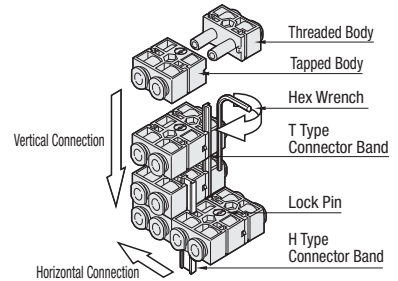
Accessory: T, H-Type Connector Band (2 pcs. each)

RoHS 10

### QCSW



### How to Use



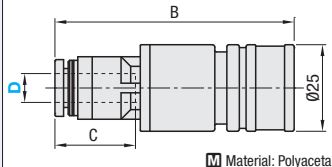
Part Number		D <sub>1</sub>	D <sub>2</sub>	B <sub>1</sub>	B <sub>2</sub>	B <sub>3</sub>	L <sub>1</sub>	L <sub>2</sub>	C <sub>1</sub>	C <sub>2</sub>	F <sub>1</sub>	F <sub>2</sub>	J	Effective Sectional Area (mm <sup>2</sup> )	Mass (g)	Unit Price	Volume Discount Rate
Type																1 - 9 pc(s).	10-30
QCSW	4	4	36.7	14.1	22.6	22	12	11	11	11.8	13.8	10	4.2	11			
	6	6	37.5	14.5	23	22	12	11.6	11.6	12.2	13.8	10	10.4	11			
	8	8	53.9	20.7	33.2	29	17	18.1	18.1	17.2	19.5	14	10.9	31			

## Resin Connectors - Sockets



RoHS 10

### JCPS



Material: Polyacetal

Part Number		D	B	C	Effective Sectional Area (mm <sup>2</sup> )	Mass (g)	Unit Price	Volume Discount Rate
Type							1 - 9 pc(s).	10-30
JCPS	6	54.8	17	11.5	23			
	8	54.7	18.1	19.8	24			
	10	59.8	20.2	22.6	28			

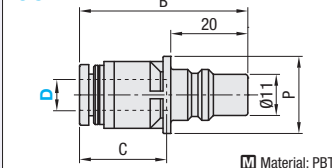
When JCPS and JCPP is combined, fluid only flows in sole direction from socket to plug.

## Resin Connectors - Plugs



RoHS 10

### JCPP



Material: PBT

Part Number		D	B	P	C	Effective Sectional Area (mm <sup>2</sup> )	Mass (g)	Unit Price	Volume Discount Rate
Type								1 - 9 pc(s).	10-30
JCPP	6	38.8	16	17	12.5	7			
	8	38.7	16	18.1	23.3	7			
	10	45.2	20	20.2	33.8	13			



Ordering Example  
Part Number  
JCPP6



Specifications

Applicable Fluid	Air
Operating Temperature Range	0 ~ 60°C (No Freezing)
Max. Operating Pressure	0.9MPa
Operating Vacuum Level	-100kPa

Graphic Symbol



When JCPS and JCPP is combined, fluid only flows in sole direction from socket to plug.  
Not usable in combination with connectors described P1414 and further.