

Ball Valves

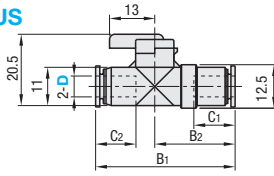
One-Touch Couplings

Union Straight - Single Handle



RoHS 10

BVUS



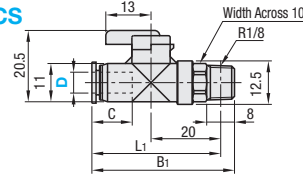
Part Number	D	B1	B2	C1	C2	Effective Sectional Area (mm ²)	Mass (g)	Unit Price	Volume Discount Rate
Type	D	B1	B2	C1	C2	Effective Sectional Area (mm ²)	Mass (g)	1-9 pc(s).	10-30
BVUS	4	36.9	20.3	10.9	11	3.4	13		
	6	40.1	23.1	11.7	11.6	10.3	13		

Straight - Single Handle



RoHS 10

BVCS



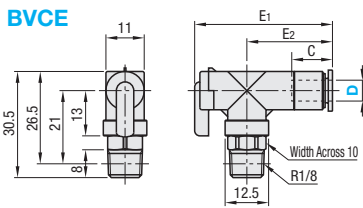
Part Number	D	B1	L1	C	Effective Sectional Area (mm ²)	Mass (g)	Unit Price	Volume Discount Rate
Type	D	B1	L1	C	Effective Sectional Area (mm ²)	Mass (g)	1-9 pc(s).	10-30
BVCS	4	40.6	36.6	11	3.8	15		
	6	41	37	11.6	10.5	15		

Elbows - Single Handle



RoHS 10

BVCE



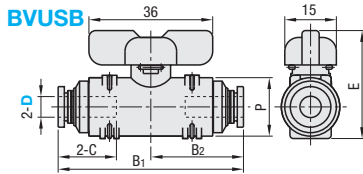
Part Number	D	C	E1	E2	Effective Sectional Area (mm ²)	Mass (g)	Unit Price	Volume Discount Rate
Type	D	C	E1	E2	Effective Sectional Area (mm ²)	Mass (g)	1-9 pc(s).	10-30
BVCE	4	10.9	36.8	21.8	4	21		
	6	11.7	39.6	24.6	8	21		

Union Straight - Double Handle



RoHS 10

BVUSB



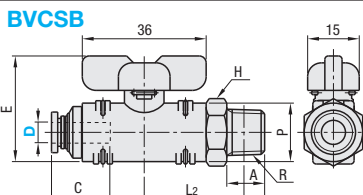
Part Number	D	B1	B2	P	C	E	Effective Sectional Area (mm ²)	Mass (g)	Unit Price	Volume Discount Rate
Type	D	B1	B2	P	C	E	Effective Sectional Area (mm ²)	Mass (g)	1-9 pc(s).	10-30
BVUSB	6	53.9	27	17	17	31.4	10.5	45		
	8	55.4	27.7	17	18.2	31.4	20.5	41		
	10	65.4	32.7	24	20.7	37.8	41	104		
	12	68.6	34.3	24	23.3	37.8	55.5	100		

Straight - Double Handle



RoHS 10

BVCSB



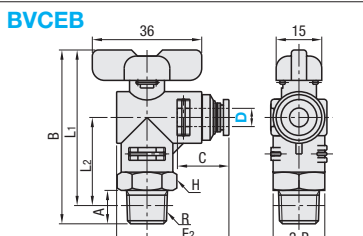
Part Number	Type	D	Nominal	R	A	B	L1	L2	P	C	E	Width Across H	Effective Sectional Area (mm ²)	Mass (g)	Unit Price	Volume Discount Rate	
BVCSB	6	1	1/8	8	59	55	28						12.5	56			
		2	1/4	11	62	55.9	29	17	17	31.4	17	22	54	59			
	8	1	1/8	8	59.7	55.7	28							17	22	54	
		2	1/4	11	62.7	56.7	29	17	18.2	31.4	17	23	57	23	57		
	10	2	1/4	11	73.7	67.7	35	24	20.7	37.8	24	39.5	131	41	134		
		3	3/8	12	74.7	68.4	35.7										

Elbows - Double Handle



RoHS 10

BVCEB

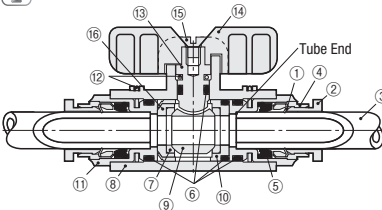


Part Number	Type	D	Nominal	R	A	B	L1	L2	P	C	E1	E2	Width Across H	Effective Sectional Area (mm ²)	Mass (g)	Unit Price	Volume Discount Rate	
BVCEB	6	1	1/8	8	54.2	50.2	28							17	11.5	57		
		2	1/4	11	57.2	51.2	29	17	17	37	27	17	11.5	60				
	8	1	1/8	8	54.2	50.2	28								17	17.5	54	
		2	1/4	11	57.2	51.2	29	17	18.2	37.7	27.7	17	18.5	58	35.5	134		
	10	2	1/4	11	68.7	62.7	37.5	24	20.7	44.7	32.7	24	36	136	36	136		
		3	3/8	12	69.7	63.4	38.2											



Ordering Example
Part Number - Nominal
BVUS6
BVCSB6 - 2

Structure Diagram



No.	Name of Parts	Material
①	Lock Pawl	Stainless Steel
②	Release Ring	POM / Polyacetal
③	Tube	Polyurethane or Nylon
④	Guide Ring	Brass (Electroless Nickel Plating)
⑤	Elastic Sleeve	NBR, Nitrile Rubber
⑥	O-Rings	NBR, Nitrile Rubber
⑦	Ball Seal	Teflon Resin
⑧	Resin Body	Single Handle Type: PBT, Polybutylene Terephthalate Double Handle Type: PPS, Polyphenylene Sulfide
⑨	Ball	Brass (Electroless Nickel Plating)
⑩	Ball Holder	Brass (Electroless Nickel Plating)
⑪	Coupling Metal Body	Brass (Electroless Nickel Plating)
⑫	Lock Pin	Stainless Steel
⑬	Stem	Brass (Electroless Nickel Plating)
⑭	Handle	POM / Polyacetal
⑮	Flat Pan-Head Screw	Steel
⑯	Ball Holder	Brass (Electroless Nickel Plating)

Features

- Single handle type has a scale on lever and is able to control the flow.
- Double handle type is possible to flow water.

Specifications

Type	Single Handle	Double Handle
Applicable Fluid	Air	Air, Water (*)
Operating Temperature Range	0 ~ 60°C (No Freezing)	
Operating Pressure Range	0 ~ 0.7MPa	0 ~ 0.9MPa
Operating Vacuum Level	~100kPa	

- * Observe following conditions when water is the applicable fluid.
1. Operating Pressure: 0 ~ 0.3MPa
 2. No water hammer (impulsive flow)
 3. Attach Insert for Soft Tubes (P1390) to plumbing tube.