

# Pressure Tanks with Base - Wide Mouth

## Number of Holes Fixed/Selectable

■ **Features:** Wide opening design for easy cleaning. Excels in liquid discharging and little liquid remains when the tank is emptied. Excels in liquid discharging and little liquid remains when the tank is emptied (Capacity: 1 ~ 10ℓ)



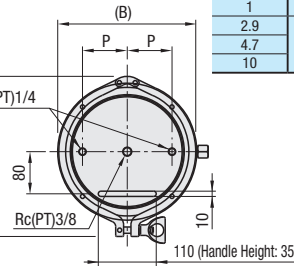
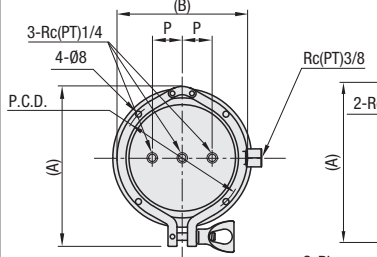
RoHS 10

Type		Material			Surface Finish	Normal Operating Pressure
Number of Holes Fixed	Number of Holes Selectable Type	Main Body	Clamp	Lid		
TNKB	TNKBH	SUS304		Nitrile Rubber	Buffered (main body only) Inner & Outer Surface: #400 Equivalent Except weld bead portion on I.D.	0.5MPa or Lower
TNKBF	TNKBFH			Fluororubber		

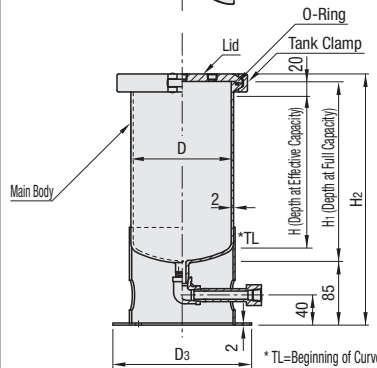
Ⓜ Feature of Nitrile Rubber / Fluororubber: P.391 Ⓜ Feature of O-Ring: P.1362

Effective Capacity (ℓ)	Weight (kg)		
	Main Body	Lid	Tank Clamp
1	1.46	0.62	0.42
2.9	2.63	1.42	0.95
4.7	3.27	2.18	1.05
10	5.35	3.45	2.2

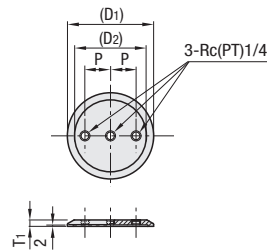
■ Number of Holes Fixed Type: 3 Holes (4.7ℓ or less)     3 Holes (10ℓ)



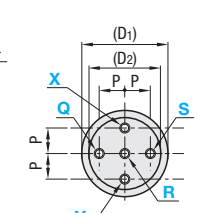
Effective Capacity (ℓ)	Lid & Clamp					
	T1	(D1)	(D2)	P	(A)	(B)
1	10	120	103	30	166	133
2.9		160	143	40	213	174
4.7	12	190	166		246	204
10		244	216	85	302	258



■ Lid (Number of Holes Fixed) 3 Holes



■ Lid (Number of Holes Selectable Type) 3 ~ 5 Holes



Ⓜ Select Q, R, S for 3 holes; Q, R, S, X for 4 holes; Q, R, S, X, Y for 5 holes.

Ⓜ For detailed clamp dimensions, see P.1371.

Ⓜ Please read "Precautions for Use" and "Operating Instruction" on P.1362 before use.

Part Number		Number of Hole Selection for Fixed Type	For "Number of Holes Selectable Type" only		At Full Capacity (ℓ)	I.D.	Effective Capacity Depth H	At Full Capacity Depth Hi	H2	P.C.D.	D3	O-Ring Size	Unit Price 1 ~ 3 pc(s).					
Type	Effective Capacity (ℓ)		Number of Holes	Rc (PT) Selection									Q, R, S, X, Y	Number of Holes Fixed Qty. 0	Number of Holes Selectable Type Qty. 3	Qty. 3	Qty. 4	Qty. 5
Number of Holes Fixed Type	Number of Holes Selectable Type	1			1.1	95.6	130	167	260	127	140	G105						
TNKB	TNKBH	0	3	1 (1/8)	3.2	133	194	240	335	165	185	G145						
(O-Ring: Nitrile Rubber)				2 (1/4)	5.1	158.4	220	270	365	190	210	G170						
TNKBF	TNKBFH	3	5	3 (3/8)	10.6	208.3	265	325	420	240	260	G220						
(O-Ring: Fluororubber)																		

Ⓜ To specify \* marked Q, R, S, X and Y, use the numbers in front of (:): 1, 2, 3.

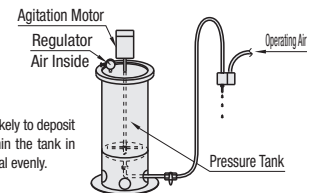
Ⓜ Full capacity level is a theoretical value that is obtained by calculation (base area x H: depth). Use within the effective H depth (up to -20mm from upper surface).

Ⓜ <Reference> Effective Capacity (ℓ) = Radius cm (D/2/10) x Radius cm (D/2/10) x 3.14 x Depth at Effective Capacity cm (H/10) / 1000 (At full capacity, Hi is used as H)

Ordering Example: Part Number - Number of Holes - Q - R - S - X - Y

Number of Holes Fixed Type: 3 Holes TNKB2.9 - 3  
 Number of Holes Selectable Type: 3 Holes TNKBH4.7 - 3 - Q2 - R3 - S3  
 Number of Holes Selectable Type: 5 Holes TNKBH4.7 - 5 - Q1 - R2 - S3 - X2 - Y2

Ⓜ For Number of Holes Selectable Type, choose between Q ~ Y according to the number of holes. Specify up to S for 3 holes, up to Y for 5 holes.



Pump a material that is likely to deposit through an agitator within the tank in order to apply the material evenly.

Alterations: Part Number - Number of Holes - Q - R - S - X - Y - (LG, FS, AN)  
 TNKBH4.7 - 4 - Q2 - R2 - S2 - X3 - FS  
 TNKB4.7 - 3 - AN

Alterations	Code	Spec.	Alterations	Code	Spec.	Alterations	Code	Spec.
Installation of Level Gauge 2-Rc(PT)3/8 57 40	LG	Install level gauge to provide visual view of the liquid level.  Suspended at a position of 40mm from upper surface (X) and 40mm from the bottom.	Low Level Float Switches Installation 51 36 10 OFF ON	FS	Install a switch to operate as alarm or signal of level of liquids such as water and oil. Stem tip will be suspended at 10mm from bottom of Tanks.  Ⓜ For details of Low Level Float Switches, see P.1372.	Pressure Tanks with Safety Function	AN	Install Safety Cover and Support Angle.  Ⓜ For details of features and dimensions, see overview page P.1362.  Ⓜ Applicable only to Number of Hole Fixed Type.