

Pressure Tanks - Standard

Number of Holes Fixed/Selectable

■ **Features:** Standard pressure tank (1.6 ~ 11ℓ) to compress liquid and force feed. Can be used for vacuum de-foaming (decompression). Float switch is available as an alteration.

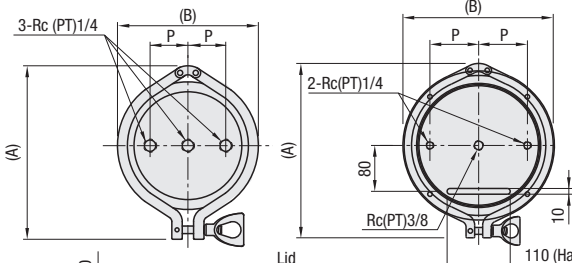


Type		Material		Surface Finish	Normal Operating Pressure
Number of Holes Fixed	Number of Holes Selectable Type	Main Body	O-Ring		
TNKA	TNKAH	SUS304	Nitrile Rubber	Buffed (main body only) Inner & Outer Surface: 400 Equivalent Except weld bead portion on I.D.	0.5MPa or Lower
TNKAF	TNKAHF		Fluororubber		

Ⓢ Feature of Nitrile Rubber / Fluororubber P.391 Ⓢ Feature of O-Ring: P.1362

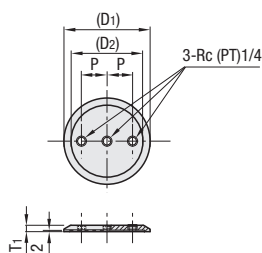
Effective Capacity (ℓ)	Weight (kg)			
	Main Body	Lid	Tank	Clamp
1.6	1.96	0.62	0.42	
2.2	2.45	0.8	0.75	
3.1	3.13	1.42	0.95	
4.4	3.77	2.18	1.05	
11	11.35	3.45	2.2	

■ Number of Holes Fixed Type: 3 Holes (4.4ℓ or less) 3 Holes (11ℓ)

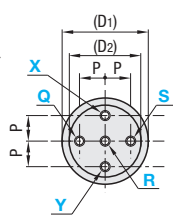


Effective Capacity (ℓ)	Lid & Clamp				
	T1	(D1)	(D2)	P	(A), (B)
1.6	120	103	30	166	133
2.2	135	118		184	149
3.1	160	143	40	213	174
4.4	190	166		246	204
11	244	216	85	302	258

■ Lid (Number of Holes Fixed) 3 Holes



■ Lid (Number of Holes Selectable Type) 3 ~ 5 Holes



Ⓢ Select Q, R, S for 3 holes; Q, R, S, X for 4 holes; Q, R, S, X, Y for 5 holes.

Ⓢ Values in () are for effective capacity 11ℓ.
 Ⓢ For detailed clamp dimensions, see P.1371.
 Ⓢ Please read "Precautions for Use" and "Operating Instruction" on P.1362 before use.



Part Number	Type	Effective Capacity (ℓ)	Number of Hole Selection for Fixed Type	Number of Holes	* Rc (PT) Selection Q, R, S, X, Y	At Full Capacity (ℓ)	I.D. D	Effective Capacity Depth H	At Full Capacity Depth H1	H2	T	h	O-Ring Size	Unit Price 1 ~ 3 pc(s).				
														Number of Holes Fixed Qty. 0	Qty. 3	Qty. 3	Qty. 4	Qty. 5
Number of Holes Fixed Type TNKA (O-Ring: Nitrile Rubber)	Number of Holes Selectable Type TNKAH TNKAF (O-Ring: Fluororubber)	1.6	0	3	1(1/8)	1.7	95.6	230	250	270		4	G105					
		2.2				2.4	108.3	250	270	290	8		G120					
		3.1				3.4	133	230	250	273			G145					
		4.4				4.8	158.4	230	250	275	10		G170					
		11				11.8	208.3	330	350	377	12		G220					

Ⓢ To specify * marked Q, R, S, X and Y, use the numbers in front of (): 1, 2, 3.
 Ⓢ Full capacity level is a theoretical value that is obtained by calculation (base area x H1 depth). Use within the effective H depth (up to -20mm from upper surface).
 Ⓢ <Reference> Effective Capacity (ℓ) = Radius cm (D/2/10) x Radius cm (D/2/10) x 3.14 x Depth at Effective Capacity cm (H/10) / 1000 (At full capacity, H1 is used as H)

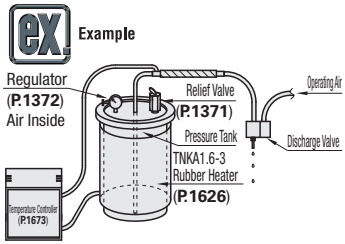
Ordering Example: Part Number - Number of Holes - Q - R - S - X - Y

Number of Holes Fixed Type: 3 Holes TNKA2.2 - 3
 Number of Holes Selectable Type: 3 Holes TNKAH3.1 - 3 - Q2 - R3 - S3
 Number of Holes Selectable Type: 5 Holes TNKAH4.4 - 5 - Q1 - R2 - S3 - X2 - Y2

Ⓢ For Number of Holes Selectable Type, choose between Q ~ Y according to the number of holes. Specify up to S for 3 holes, up to Y for 5 holes.

Alterations Example: Part Number - Number of Holes - Q - R - S - X - Y - (FS, AN)
 TNKAH2.2 - 4 - Q2 - R2 - S3 - X3 - FS
 TNKAF3.1 - 3 - Q2 - R2 - S3 - X3 - AN

Alterations	Code	Spec.	Alterations	Code	Spec.
Low Level Float Switch Installation	FS	Install a switch to operate as alarm or signal of level of liquids such as water and oil. Stem tip will be suspended at 10mm from bottom of Tanks. Ⓢ For details of Low Level Float Switches, see P.1372.	Safety Function Type	AN	Install Safety Cover and Support Angle. Ⓢ For details of features and dimensions, see overview page. P.1362 Ⓢ Applicable only to Number of Hole Fixed Type.



Pump feed a material whose viscosity changes with surrounding temperature, while maintaining the viscosity constant by controlling the temperature.