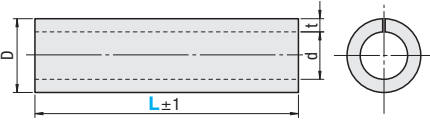


Heat/Cold Retention Pipe Covers / L-Shaped Angles for Steel Pipes

Heat/Cold Retention Pipe Covers for Pipes



HKCVP



Operating Temperature Range: -20 ~ 120°C **M** Material: Heat Resistant Polyethylene Foam

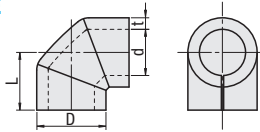
Part Number Type	No.	L 1mm Increment	D	d	t	Unit Price				
						L30-250	L251-500	L501-750	L751-1000	L1001-1500
HKCVP	6A	30-1500	26	10	8					
	8A		29	13	8					
	10A		38	18	10					
	15A		42	22	10					
	20A		48	28	10					
	25A		55	35	10					
	32A		63	43	10					
	40A		69	49	10					
	50A		81	61	10					

Heat/Cold Retention Pipe Covers for Elbow / Tee



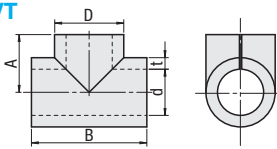
HKCVE

(For Elbow)



HKCVT

(For Tee)



Operating Temperature Range: -20 ~ 120°C **M** Material: Heat Resistant Polyethylene Foam

Part Number Type	No.	D	d	t	L	A	B	Unit Price	
								HKCVE	HKCVT
HKCVE HKCVT	6A	32	16	8	24	32	64		
	8A	36	20	8	26	34	68		
	10A	44	24	10	32	40	80		
	15A	48	28	10	34	42	84		
	20A	54	34	10	36	44	88		
	25A	63	43	10	40	50	100		

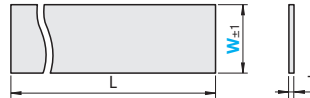
*A dimension and B dimension are applicable only for HKCVT.

Ordering Example **Part Number** - L
HKCVP6A - 100
HKCVE6A

Pipe Covering Tape



HKTPE



Operating Temperature Range: -20 ~ 80°C **M** Material: Polypropylene

Part Number Type	W (mm)	L (m)	T (mm)	Unit Price	
				1 ~ 9 pc(s).	Volume Discount Rate 10 ~ 30 pcs.
HKTPE	25	55	0.12		
	50				

Ordering Example **Part Number**
HKTPE25

*For orders larger than indicated quantity, please check with WOS.

L-Shaped Angles for Steel Pipes

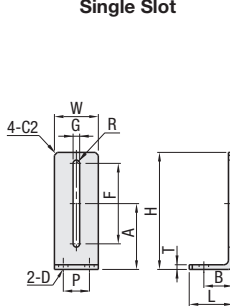


RoHS 10

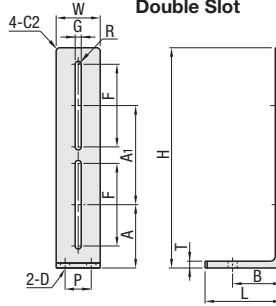
Type			Material	Surface Treatment
Single Slot	Double Slot	Cantilever		
SGPL	SGPLD	SGPLK	SPCC	Black Oxide
SGPLS	SGPLDS	SGPLKS	SUS304D	-

*The material of SGPLD is SPHC.

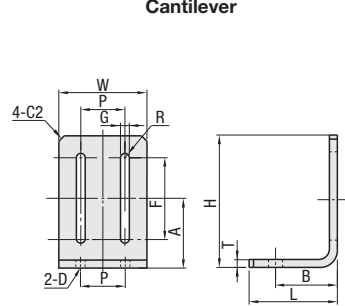
Single Slot



Double Slot



Cantilever



Part Number		T		H	L	W	D				G			Unit Price					
Type	U-Bolt Thread Size M	SGPL	SGPLS				Hole Dia.	Applicable Screw	P	B	A	F	Slotted Hole	Applicable Screw	R	SGPL	SGPLS		
Single Slot SGPL SGPLS	4	3.2	3	80	30	30	5.5	M5	20	20	45	55	4.5	M4	2.25				
	5			100	40	40										5.5	M5	2.75	
	6			100	40	40										6.5	M6	3.25	

Part Number		T		H	L	W	D				G			Unit Price						
Type	U-Bolt Thread Size M	SGPLD	SGPLDS				Hole Dia.	Applicable Screw	P	B	A	A ₁	F	Slotted Hole	Applicable Screw	R	SGPLD	SGPLDS		
Double Slot SGPLD SGPLDS	4	4.5	4	160	50	40	6.5	M6	25	35	45	75	60	4.5	M4	2.25				
	5			200	70	40											5.5	M5	2.75	
	6			200	70	40											8.5	M8	3.25	

Part Number		T		H	L	W	D		B	A	F	G		Unit Price	
Type	U-Bolt Thread Size M	SGPLK	SGPLKS				Hole Dia.	Applicable Screw				Slotted Hole	Applicable Screw	R	P
Cantilever SGPLK SGPLKS	4	3.2	3	80	30	80	8.5	M8	20	45	55	4.5	M4	2.25	40
	5			100	40	90									5.5

*P237 Use with flat washers (PWF, SPWF) is recommended. *For detailed U bolt dimensions, see P.1270.

Ordering Example **Part Number**
SGPL4

