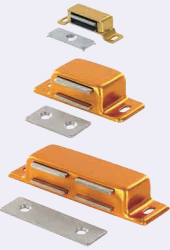


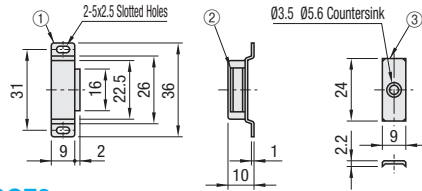
# Magnetic Catches

## Magnetic Catches

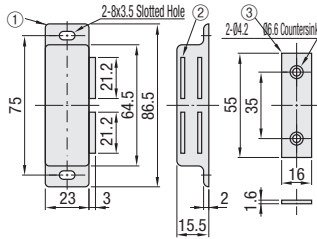


RoHS 10

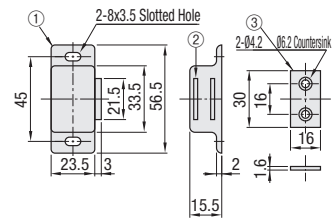
### MGCE1S



### MGCE2



### MGCE1



No.	Part Name	Material	Surface Treatment
①	Housing	Aluminum Alloy	Anodize
②	Magnet	Ferrite	-
③	Catch Plate	SPCC	* Nickel Plating

\* Trivalent Chromate for MGCE1 only

Part Number Type	No.	Retention Force (kgf)	Mass (g)	Unit Price	
				1 - 19 pc (s)	20-50
MGCE	1S	0.5	7.5		
	1	5.5	36.7		
	2	9	72		



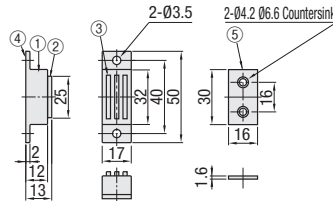
Ordering Example Part Number  
MGCE2

## Magnetic Catches

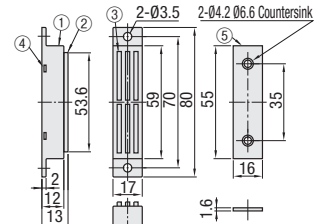


RoHS 10

### MGCB1



### MGCB2



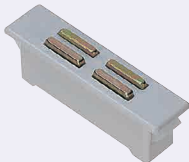
No.	Part Name	Material	Surface Treatment
①	Housing	BSP	Nickel Plating
②	Yoke	SPCC	Nickel Plating
③	Magnet	Ferrite	-
④	Base	Aluminum Alloy	Anodize
⑤	Catch Plate	SPCC	Nickel Plating

Part Number Type	No.	Holding Force (kgf)	Mass (g)	Unit Price	
				1 - 19 pc (s)	20-200
MGCB	1	7	32		
	2	10	63		

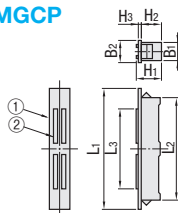


Ordering Example Part Number  
MGCB1

## Magnetic Catches



### MGCP



### Mounting Hole Dimensions

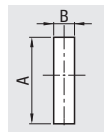


Plate Thickness t	Mounting Hole Dimensions					
	MGCP1		MGCP2, MGCP3H		MGCP3	
	A	B	A	B	A	B
0.5	22.5	8.3	-	-	-	-
0.8	-	-	34.1	-	55.0	-
1.0	-	-	34.1	-	55.0	-
1.2	-	-	34.5	8.2	55.5	8.2
1.6	-	-	35.0	-	56.0	-
2.0	-	-	36.5	-	56.5	-

No.	Part Name	Material	Surface Treatment
①	Housing	ABS Resin	-
②	Base	SPCC	Trivalent Chromate

MGCP1, 2, 3 ... Ferrite Magnet  
MGCP3H ... Neodymium Magnet

Part Number Type	No.	L1	L2	L3	B1	B2	H1	H2	H3	Retention Force (kgf)	Mass (g)	Unit Price	
												1 ~ 4 pc (s)	5-200
MGCP	1	24.2	22.4	15	8.2	9.6	12.3	10.9	0.9	1.3	5		
	2	40	33.9	21.6			13.5	11	1.2	2.2	9		
	3H	64	54.5	43	8	10	14	11.5	1.5	4.5	20		
	3	64	54.5	43									

MGCP3H is a compact type of MGCP3 with the same retaining force.



Ordering Example Part Number  
MGCP2