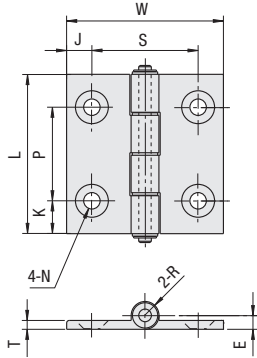


Aluminum Hinges / Aluminum Hinges for Unequal Size Extrusions / Aluminum Hinges for Extra Low Head Cap Screws / Hinge Nuts

Aluminum Hinges
Aluminum Hinges for Unequal Size Extrusions

RoHS 10

HHPSN (Clear Anodize)
HHPBSN (Black Anodize)
HHPSF (For Unequal Size Extrusions: Clear Anodize)

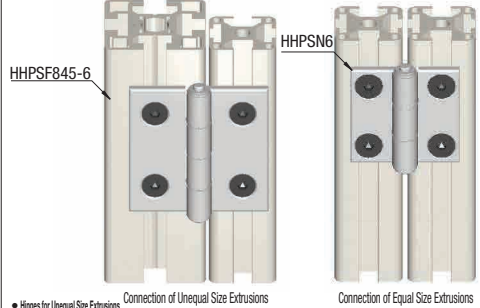


MMaterial: A6063S-T5, Bushing: Polyacetal
SSurface Treatment: Anodize



Example

• For a set of screws and nuts for an aluminum extrusion, see **P805**.
 45 Square Extrusion 30 Square Extrusion 30 Square Extrusion 30 Square Extrusion



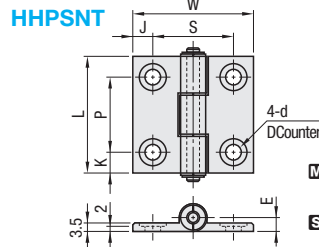
• Hinges for Unequal Size Extrusions
 Connection of Unequal Size Extrusions
 Connection of Equal Size Extrusions
 • HHPSF 6-5: Connects a 20 Sq. Extrusion (Slot Width 6mm) to a 30 Sq. Extrusion (Slot Width 8mm).
 HHPSF 8-6: Connects a 30 Sq. Extrusion (Slot Width 8mm) to a 40 Sq. Extrusion (Slot Width 10mm).
 HHPSF 845-5: Connects a 20 Sq. Extrusion (Slot Width 6mm) to a 45 Sq. Extrusion (Slot Width 10mm).
 HHPSF 8-5: Connects a 20 Sq. Extrusion (Slot Width 6mm) to a 40 Sq. Extrusion (Slot Width 10mm).
 HHPSF 845-6: Connects a 30 Sq. Extrusion (Slot Width 8mm) to a 45 Sq. Extrusion (Slot Width 10mm).
 • The hinge nuts below are recommended when mating to panels, etc.

Part Number	* Allowable Load		Mass g	L	W	K	P	J	S	T	E	R	Clear Anodize		Black Anodize		
	Type	No.											kg	N	Unit Price	Volume Discount Rate	Unit Price
HHPSN HHPBSN (Black Anodize)	5	10	98	22	47	36	11	25	7.5	21	5.5	11	3.5	5	5		
	6	10	98	30	48	8.5	30	8	32				5.5	5.5			
	8	15	147	70	63	62	13	37	10	42	6.5	13	4.5				
HHPSF (For Unequal Size Extrusions)	6-5	10	98	33	47	44.75	8.5	30	10.75	26.5	5.5	11	3.5	5.5	5.5		
	8-5	10	98	43	63	54.25	13	37	15.25	31.5	5.5	11	3.5	5.5	5.5		
	845-5	10	98	43	63	55.5	13	37	14	34	5.5	11	3.5	5.5	5.5		
	8-6	15	147	48	63	62	13	37	12.5	37	6.5	13	3.5	5.5	5.5		
	845-6	15	147	48	63	62	13	37	11.5	39	6.5	13	3.5	5.5	5.5		

* The allowable load is the value when 2 pieces are used.

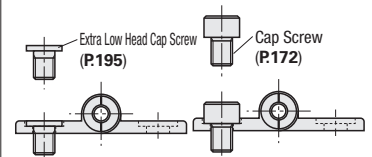
Aluminum Hinges for Extra Low Head Cap Screws

RoHS 10



Example

Standard cap screws can be used for installation.
 • The hinge nuts below are recommended when mating to panels, etc.

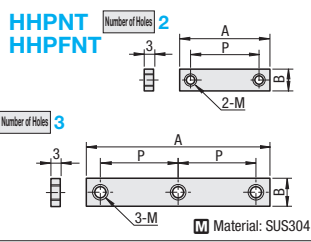


Part Number	* Allowable Load		Mass g	L	W	K	P	J	S	d	D	E	Unit Price	Volume Discount Rate	
	Type	No.													kg
HHPSNT	5	10	98	22	47	36	11	25	7.5	21	5.5	10	5		
	6	10	98	34	48	8.5	30	8	32	6.5	11	5.5			
	8	15	147	49	63	62	13	37	10	42	6.5	11	5.5		

* The allowable load is the value when 2 pieces are used.

Hinge Nuts

RoHS 10



Part Number	Type	No.	Number of Holes	B	A	P	M	Unit Price	Volume Discount Rate
								1 ~ 8 pc (s).	10 ~ 500
HHPNT	5	2	2	9	34	25	5		
	6	2	3	10	40	30			
	8	2	3	12	49	37	6		
	845	2	3	12	86	43			
	845	2	3	12	55	98			
HHPFNT	5	2	2	14	33	20	5		
	6	2	2	16	38	25	5		
	8	2	2	18	48	30	6		

Applicable Hinge Nuts for Panel Mounting

Hinges		No.	Number of Holes	Applicable Hinge Nut
HHPSN	HHPBSN	5	2	HHPNT5-2
HHPSJ	SHHPS	6	3	HHPNT6-2
HHPSDT	HHPSNA	8	2	HHPNT8-2
SHHPSNA	HHPMGS	8	2	HHPNT845-2
HHPSNL	SHHPSZ	8-45		HHPNT8-2
HHPSSD	HHPNR	8-45		HHPNT8-2
HHPSF		8-6		HHPNT5-3
		845-6		HHPNT6-3
		5		HHPNT8-3
SHHPS		6	3	HHPNT845-3
		8		HHPNT5-2
		845		HHPNT6-2
HHPFLN	HHPFRN	5	2	HHPNT8-2
HHPFDLN	HHPFRN	8	2	HHPNT8-2
HHPFDRN		8-45		HHPNT8-2

• Not applicable to HHPSJ6, SHHPSNA6 and SHHPSZ6.

Ordering Example
 Part Number - Number of Holes
HHPSN6 - 3
HHPSNT8
HHPNT5 - 3