

# Y-Shaped Clamp Levers / Wing-Shaped Clamp Levers / Clamp Levers with Captured Washer

## Y-Shaped Clamp Levers

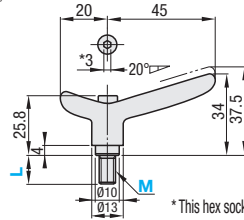


RoHS10

Type	Lever		Screw		Spring
	M Material	S Surface Treatment	M Material	S Surface Treatment	M Material
CLDMY	Zinc Die Casting	Baked Paint	S45C	Black Oxide	SUS304-WPB
CLMSY	-	-	SUS303	-	-

16 teeth (serrations).

Threaded  
CLDMY  
CLMSY



\* This hex socket is created during a production of Levers. It is not a socket used during an installation of Levers.

Part Number Type	M	L Selection					Lever Color	Max. Load Fmax. (N)		Max. Tightening Force Pmax. (kN)		Reference Mass (g)	Unit Price	
		4	12	16	20	25		SUS303	S45C	SUS303	S45C		CLDMY	CLMSY
CLDMY CLMSY	4	(12)	16	(20)	25	B (Black) M (Orange) S (Silver Grey)	48	80	1.8	3	40			
	5	(12)	16	20	25		32	65	108	2.9	4.8	40		
	6	12	16	20	25		32	110	184	4.1	6.8	41		

⊗ Dimensions in ( ) are not applicable to CLDMY

## Wing-Shaped Clamp Levers



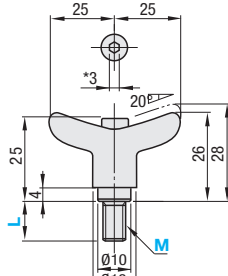
RoHS10

Type	Lever		Screw		Spring
	M Material	S Surface Treatment	M Material	S Surface Treatment	M Material
Threaded CLDMCH	Zinc Die Casting	Electrostatic Paint	S45C	Black Oxide	SUS304-WPB
Tapped CLDFCH	-	-	SUS303	-	

16 teeth (serrations).

Threaded  
CLDMCH  
CLMSCH

Tapped  
CLDFCH



\* This hex socket is created during a production of Levers. It is not a socket used during an installation of Levers.

Part Number Type	M	L Selection (Threaded)					L1 (Tapped)	Lever Color	Max. Load Fmax. (N)		Max. Tightening Force Pmax. (kN)		Reference Mass (g)		Unit Price		
		4	12	16	20	25			SUS303	S45C	SUS303	S45C	Threaded	Tapped	Threaded	CLDMCH	CLMSCH
Threaded CLDMCH CLMSCH Tapped CLDFCH	4	12	16	20	25	7	B (Black) M (Orange) S (Silver Grey)	48	80	1.8	3	32	29				
	5	12	16	20	25			32	65	108	2.9	4.8	33	29			
	6	12	16	20	25			32	110	184	4.1	6.8	34	29			

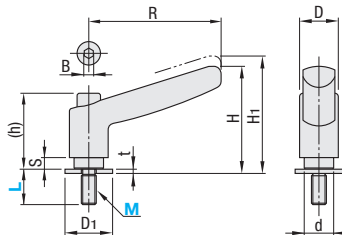
## Clamp Levers with Captured Washer



RoHS10

Type	Lever		Screw		Spring	Flat Washer
	M Material	S Surface Treatment	M Material	S Surface Treatment	M Material	S Surface Treatment
CLDMST	Zinc Die Casting	Baked Paint	SUM23	Black Chromate	SUS304-WPB	S45C Electroless Nickel Plating

CLDMST



⊗ Hex Socket B is created during a production of Levers. It is not a socket used during an installation of Levers.

Part Number Type	M	L Selection					Lever Color	R	H	H1	(h)	S	D	d	D1	t	Number of Serrated Teeth	B	Max. Load Fmax. (N)	Max. Tightening Force Pmax. (kN)	Reference Mass (g)	Unit Price
		CLDMST	6	12	16	20		25	B (Black)	45	36.5	40	25.8	4	13	10	16	1.5	16	3	95	3.6
63.5	47						50.5			32.3	7	17.5	14	22	2	20	4	171	6.8	90		
78.5	56.5			60.5	37.6	8	21	16		28	2.5	24	4	221	10.8	182						
93	70.5			74.5	45.6	14	24	19		35	3	28	4	277	16.1	227						



Ordering Example  
Part Number - L(L1) - Lever Color  
CLDMY4 - 16 - S  
CLDMCH4 - 12 - M  
CLDFCH6 - 7 - B  
CLDMST6 - 25 - B