

Antivibration Pads

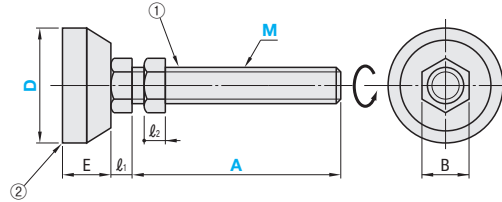
Heavy Load

■ Heavy Load

FBR
FBRM
FBRS (Stainless Steel)



RoHS 10



Type	① Main Body		② Rubber	
	Material	Surface Treatment	Material(Color)	Hardness
FBR	SS400 Equivalent	Trivalent Chromate	Chloroprene Rubber (Black)	Hs70
FBRM			Non-Staining Chloroprene Rubber (Gray) Electrically Conductive Rubber (Black)*	
FBRS	SUS304	-	Chloroprene Rubber (Black)	

* Electrically conductive rubber has an identification mark on the back side.

Part Number Type	D	M (Coarse)	A					FBRM Rubber Material	l ₁	l ₂	E	B	Vertical Load Range (kN)	Static Compression Spring Constant Value (kN/mm)	
			70	100	130	150	180								
FBR FBRM FBRS (Stainless Steel)	60	12	70	100	130	150	C Non-Staining Chloroprene Rubber, Gray	10	10	25	24	1.47~2.94	2.94±15%		
			16	70	100	130		150	180		10			13	24
			20	100	130	150		(180)	13		16			30	
	70	16	70	100	(130)	150	(180)	D Electrically Conductive Rubber, Black	10	13	29	24	2.45~4.41	4.41±15%	
				20	100	(130)	(150)		(180)	13		16			30
				16	(70)	100	130		(150)	(180)		10			13
20	100	130	(150)	(180)	13	16	30								
FBR FBRM	100	16	70	100	130	150	180	10	13	35	24	3.43~6.86	7.35±15%		
			20	100	130	150	180				13			16	30
			16	70	100	150	180				10			13	37
	20	100	130	150	180	13	16	30							

A dimension in () are not available for FBRS. (M12 is available for FBR only. Wrench flats of the included nut are 19 mm.
* Rubber type is not selectable for FBR and FBRS (Chloroprene rubber only). kgf (Load) = N x 0.101972



Ordering
Example

Part Number	M	A	Rubber Material
FBR60	16	100	
FBRM60	16	100	C



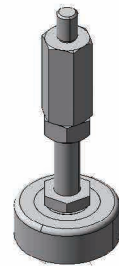
Example

Combination of these app. examples can be selected on our website. Selection Detail **#P87**

*Enter the search keyword in the search box on e-Catalog. The search result will be shown in "Modular Assembler" area.

e-Catalog Search Keyword

#MA663



D	M (Coarse)	Unit Price														
		A70			A100			A130			A150			A180		
		FBR	FBRM	FBRS	FBR	FBRM	FBRS	FBR	FBRM	FBRS	FBR	FBRM	FBRS	FBR	FBRM	FBRS
60	12	-	-	-	-	-	-	-	-	-	-	-	-	-	-	-
	16	-	-	-	-	-	-	-	-	-	-	-	-	-	-	-
	20	-	-	-	-	-	-	-	-	-	-	-	-	-	-	-
70	16	-	-	-	-	-	-	-	-	-	-	-	-	-	-	-
	20	-	-	-	-	-	-	-	-	-	-	-	-	-	-	-
	16	-	-	-	-	-	-	-	-	-	-	-	-	-	-	-
90	20	-	-	-	-	-	-	-	-	-	-	-	-	-	-	-
	16	-	-	-	-	-	-	-	-	-	-	-	-	-	-	-
	20	-	-	-	-	-	-	-	-	-	-	-	-	-	-	-
100	16	-	-	-	-	-	-	-	-	-	-	-	-	-	-	-
	20	-	-	-	-	-	-	-	-	-	-	-	-	-	-	-
	16	-	-	-	-	-	-	-	-	-	-	-	-	-	-	-
120	20	-	-	-	-	-	-	-	-	-	-	-	-	-	-	-
	16	-	-	-	-	-	-	-	-	-	-	-	-	-	-	-
	20	-	-	-	-	-	-	-	-	-	-	-	-	-	-	-