

Joists for Factory Frames

RoHS10

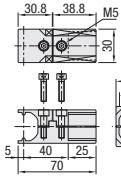


Part Number	Material
FFB1, FFB2	ADC12
FFB3-FFB5	ADC12 Equivalent

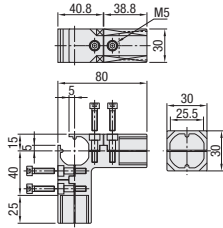
Reference Tightening Torque: 6.8N/m

The shape of FFB3 ~ FFB5 may be partially altered for product improvements.

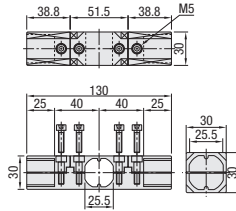
FFB1



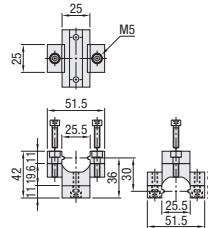
FFB2



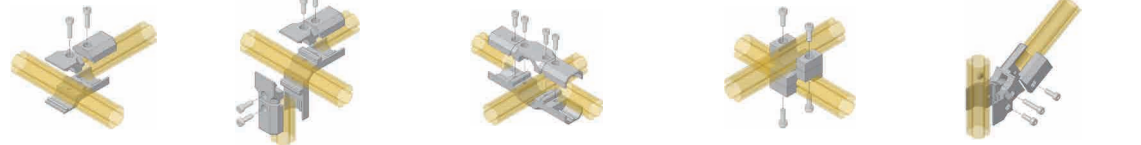
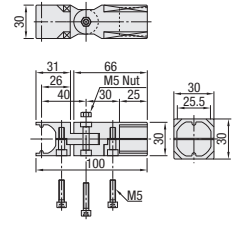
FFB3



FFB4



FFB5



Part Number Type	No.	Mass (g)	Included Screw and Nut		Unit Price
			Size	Quantity	
FFB	1	88	M5-18	2	
	2	168		4	
	3	172			
	4	92		M5-15	2
	5	145	M5-20	1	
			M5 Nut	1	

RoHS10

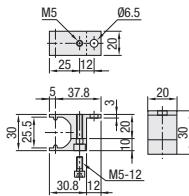


Part Number	Material
FFB6-FFB10	ADC12 Equivalent

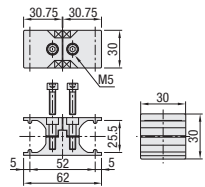
Reference Tightening Torque: 6.8N/m

The shape may be partially altered for product improvements.

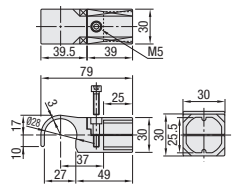
FFB6



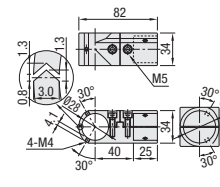
FFB7



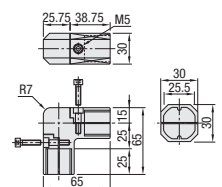
FFB8



FFB9



FFB10



Part Number Type	No.	Mass (g)	Included Screw and Nut		Unit Price
			Size	Quantity	
FFB	6	35	M5-12	1	
	7	80		2	
	8	84		1	
	9	110		2	
	10	145			



Alterations



Part Number - (SET)
FFB9 - SET

Alteration	Code	Spec.
Set Screw	SET	Include 4 set screws (M4-6) with FFB9 as a set. Applicable to FFB9 only.