

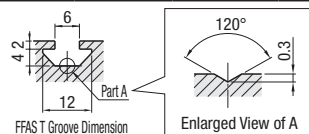
Note that, for some of the types shown here, order might be unable to be received by the MISUMI Malaysia, Indonesia and/or India offices.

# Factory Frames



RoHS10

Type			Material	Surface Treatment
L Configurable	3000mm 6 pcs./set	4000mm 5 pcs./set		
FFA	FFATS	FFAKS	A6N01SS-T5	Anodize
FFAU	FFAUS	FFAUKS		
FFAS	FFASTS	FFASKS		



### <Standard Type>

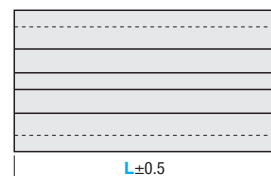
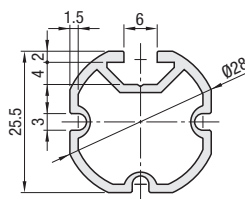
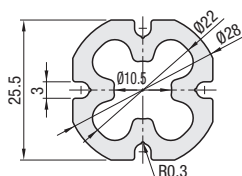
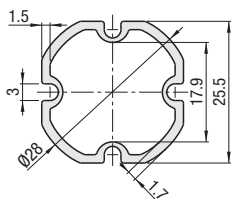
**FFA** (L Configurable)  
**FFATS** (Base Material 3000mm 6 pcs./set)  
**FFAKS** (4000mm 5 pcs./set)

### <High Rigidity Type>

**FFAU** (L Configurable)  
**FFAUS** (Base Material 3000mm 6 pcs./set)  
**FFAUKS** (4000mm 5 pcs./set)

### <Groove Type>

**FFAS** (L Configurable)  
**FFASTS** (Base Material 3000mm 6 pcs./set)  
**FFASKS** (4000mm 5 pcs./set)



Please select the nuts for the slots from P558-566.

### L Configurable

Part Number		L 1mm Increment	Mass kg/m	Sectional Area mm <sup>2</sup>	Geometrical Moment of Inertia mm <sup>4</sup>		Unit Price Less Than 300mm 1~50 pc(s).	Unit Price/m 300mm or More 1~50 pc(s).
Type	No.				lx	ly		
FFA	28	60~4000	0.37	137.2	1.07x10 <sup>4</sup>	1.07x10 <sup>4</sup>		
FFAU			0.82	303.1	1.86x10 <sup>4</sup>	1.86x10 <sup>4</sup>		
FFAS			0.42	155.6	1.11x10 <sup>4</sup>	1.12x10 <sup>4</sup>		

### 3000mm 6 pcs./set

Part Number		L(mm)	Mass kg/pc.	Unit Price 6 pcs./set 1~20 sets
Type	No.			
FFATS	28	3000 (6 pcs./set)	1.11	
FFAUS			2.46	
FFASTS			1.26	

### 4000mm 5 pcs./set

Part Number		L(mm)	Mass kg/pc.	Unit Price 5 pcs./set 1~20 set(s)
Type	No.			
FFAKS	28	4000 (5 pcs./set)	1.49	
FFAUKS			3.28	
FFASKS			1.69	

For orders larger than indicated quantity, please check with WOS.

The Cutter, Deburring Tool (P911), and Adhesive (P895) cannot be used on the Factory Frames.

For orders larger than indicated quantity, please check with WOS.

For orders larger than indicated quantity, please check with WOS.



Ordering Example  
**Part Number** - **L**  
**FFA28** - **1800**  
**FFATS28**

When L is less than 300, the unit price is as indicated in the table, regardless of its length.  
 When L is 300 or more, total prices are calculated as follows;  
 Unit Price/m x Specified Full Length = Sales Price



Example



Alterations

Alterations		Tapping on Ends		
Code	Spec.	LTP	RTP	TPW
Applicable Frame		Tap Shape	Placements of the frames shown below are the standard reference positions.	
	LTP: Left End		RTP: Right End	TPW: Both Ends
FFAU	M12 Depth 36	200	200	400

Available only for L Configurable Type FFAU.