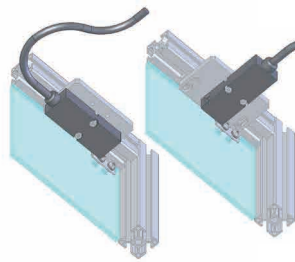
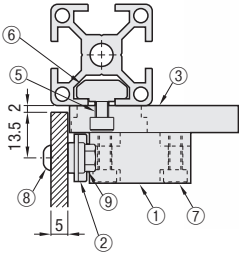


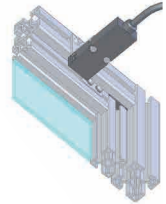
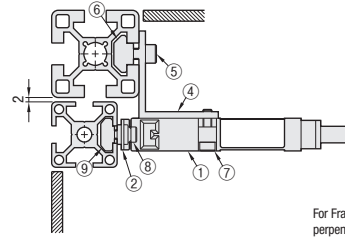
ex Example

Panel Door Example



For Panel Doors, the switch can be mounted horizontally or vertically.

Extrusion Frame Door Example



For Frame Doors, the switch can be mounted perpendicular to the Frame only.

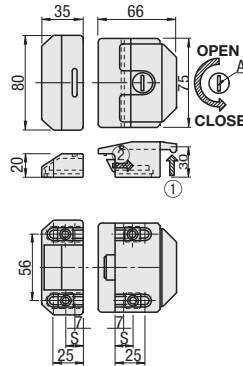


Ordering Example

Part Number
HSWCA6

Locks for Aluminum Extrusions

HFLOCK



To lock (1), insert a key into A and rotate 180 degrees counterclockwise.

When (1) is raised, (2) is retracted.

S: Moving range of special nut
7s25

Cannot be used for sliding doors.

Material: ADC12

Part Number		Extrusion (Series)	Accessory				Unit Price 1 ~ 9 pc(s).	Volume Discount Rate 10~50
Type	No.		Screw	Nut	Key			
HFLOCK	5	HFS5	CBM6-20	4 pcs.	Dedicated M6 Nut	4 pcs.	Key	2 pcs.
	6	HFS6	CBM6-30					
	8	HFS8	CBM6-35					
	8-45	HFS8-45	CBM6-40					

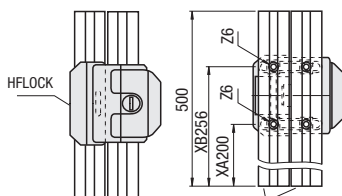


Ordering Example

Part Number
HFLOCKS

ex Example

Extrusion Installation Example



HFS6-3030-500-Z6-XA200-XB256



Alteration examples of counterbore machining on extrusions for HFLOCK mounting

Extrusion Square	Alternation Instruction	Quantity
20	HFS5-2020-500-Z6-XA200-XB256	2
30	HFS6-3030-500-Z6-XA200-XB256	2
40	HFS8-4040-500-Z6-XA200-XB256	2
45	HFS8-4545-500-Z6-XA200-XB256	2

HFLOCK is a lock for aluminum extrusions. The lock is mounted on the counterbored extrusion using the included screws, as shown on the Alteration Examples above.