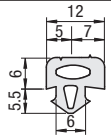
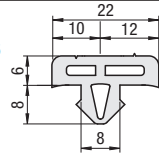




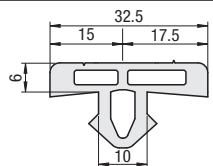
**HSCS5
HSCSF5**



**HSCS6
HSCSF6**



**HSCS8
HSCSF8**



Color: Outgas Testing Results of S Panel Spacer

| Measuring Method | GCMS | GCMS | GCMS | GCMS |
|------------------|-----------------------|-----------------------|-----------------------|-----------------------|
| Outgas | Acetaldehyde | 1-Trimethylpentane | Dimethylheptane | Xylene |
| 60°C 60min. | Below Detection Limit | Below Detection Limit | Below Detection Limit | Below Detection Limit |
| Detection Limit | 0.01µg/g | 0.01µg/g | 0.01µg/g | 0.01µg/g |

| Type | Color | Material | Heat Resistance Temperature |
|---------------|--------------------|-----------------------|-----------------------------|
| HSCS HSCSF | Black | EPDM | -40 ~ 120°C |
| | Light Gray Economy | | |
| | Light Gray | Olefin Type Elastomer | -20 ~ 80°C |

RoHS 10

Standard Length

| Part Number | Type | No. | Color | Length mm | Extrusion (Series) | B (Black) | | SE (Light Gray Economy) | | S (Light Gray) | |
|-------------|------|-----|-------------------------|-----------|--------------------|------------|----------------------|-------------------------|----------------------|----------------|----------------------|
| | | | | | | Unit Price | Volume Discount Rate | Unit Price | Volume Discount Rate | Unit Price | Volume Discount Rate |
| HSCS | | 5 | B (Black) | 12 | HFS5 | | | | | | |
| | | 6 | SE (Light Gray Economy) | | HFS6 | | | | | | |
| | | 8 | S (Light Gray) | | HFS8 HFS8-45 | | | | | | |

Configurable Length

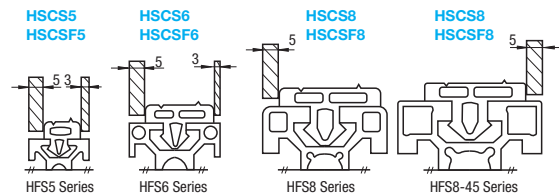
| Part Number | Type | No. | Color | Length 1mm Increment | Extrusion (Series) | B (Black) | | SE (Light Gray Economy) | | S (Light Gray) | |
|-------------|------|-----|-------------------------|----------------------|--------------------|--------------|----------------------|-------------------------|----------------------|----------------|----------------------|
| | | | | | | Unit Price/m | Volume Discount Rate | Unit Price/m | Volume Discount Rate | Unit Price/m | Volume Discount Rate |
| HSCSF | | 5 | B (Black) | 100-3000 | HFS5 | | | | | | |
| | | 6 | SE (Light Gray Economy) | | HFS6 | | | | | | |
| | | 8 | S (Light Gray) | | HFS8 HFS8-45 | | | | | | |

For orders larger than indicated quantity, please request a quotation.

Ordering Example: Part Number - Color - Length
 HSCS5 - B - 12
 HSCSF5 - SE - 1520

ex Example

- It can be used to fill a gap between the panel and the frame by using the mounting holes for a cover on a bracket.
- It can be also used as a stopper for panel doors.

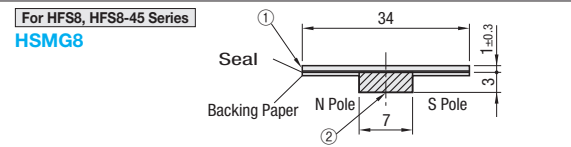
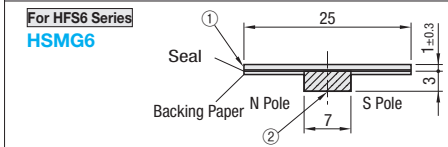


Magnetic Catch with Adhesive Tape



RoHS 10

| Type | Material | | Heat Resistance Temperature |
|------|-------------|----------------------------|-----------------------------|
| | ① Sponge | ② Magnet | |
| HSMG | Chloroprene | Anisotropic Ferrite Magnet | 50°C |



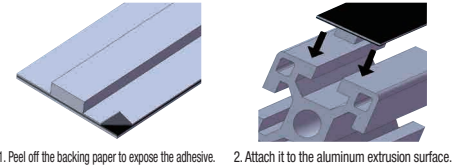
N Pole is marked. For mounting, refer to the Example.

| Part Number | Type | No. | Color | Length mm | Extrusion (Type) | Magnet Type | Attraction Force per 100mm (g) | Surface Magnetic Flux Density Gauss (G) | Unit Price | Volume Discount Rate |
|-------------|------|-----|-----------|-----------|------------------|---|--------------------------------|---|-------------|----------------------|
| HSMG | | 6 | B (Black) | 1000 | HFS6 | Anisotropic Ferrite Magnet (Plastic Magnet) | 75 | 500 | 1 ~ 4 pc(s) | 5-50 |
| | | 8 | | | HFS8(-45) | | | | | |

- Attraction force is reference value at normal temperature (20°C). Can be attached on door frames and can be used as simplified magnetic catch.
- The attraction force is a reference value gained when two HSMG attracted each other.
- Can be cut with scissors.
- For orders larger than indicated quantity, please check with WOS.

Ordering Example: Part Number - Color
 HSMG6 - B

ex Example



- Peel off the backing paper to expose the adhesive.
- Attach it to the aluminum extrusion surface.