

Blind Joint Components

Center Joint Kits for 8-45 Series (Slot Width 10mm) Aluminum Extrusions

For details of fastening method, see P605.
Alterations necessary to use this component

M Type Hole Alterations
P.766

Features: Requires only one screw for tightening. Work efficiency enhancing anti-rotation type is added.

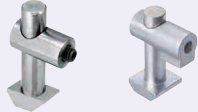
Center Joint Kits Pre-Assembly Insertion Type

(Standard Direction) (90-Degree Rotated)

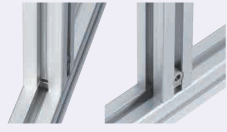


Center Joint Kits

Post-Assembly Insertion Type With Rotation Stopper

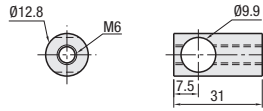


(Ref.) Corner section when using this joint

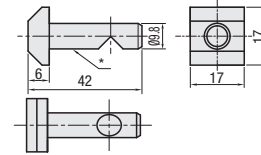


Type	Components (1 pc. each)					
	Joint Guide		Center Post		Set Screw	
	Type	Material	Type	Material	Size	Material
HMJ	Standard	SUS304	Pre-Assembly Insertion Standard Direction	SCS13	NO.8-45: M6x20	SCM435 (Surface Treatment: Black Oxide Film)
HMJR			Pre-Assembly Insertion 90-Degree Rotated			
HAMJ			Post-Assembly Insertion Standard Direction			

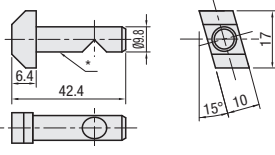
Joint-Guide (Standard)



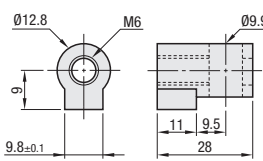
Pre-Assembly Insertion Center Post Standard Direction



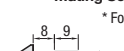
Post-Assembly Insertion Center Post



Joint-Guide (with Rotation Stopper)



For center posts No.8-45, Extrusion Mating Section (Ø12) is provided as below.



Center Joint No.	Applicable Extrusion No.	[Exception] Extrusion Not Available
8-45	8-4545*1 8-4590*1 8-45180*2	*1 HFSL8-4545, HFSLF8-4545, HFSLR8-4545 and HFSL8-4590 cannot be used because the thickness of slot extrusion is different. Curved HFSR8-4545 is not applicable since wrench holes cannot be added. *2 Cannot be used in the long side direction because standard hole machining is not allowed.

Part Number		Accessory			Unit Price	
Type	No.	Center Post	Joint Guide	Set Screw	Quantity	Volume Discount Rate
HMJ	8-45	Pre-Assembly Insertion Center Post 8-45	Joint Guide 8-45	M6x20	1	1-99 pc(s), 100-200
HMJR	8-45	Pre-Assembly Insertion 90-Degree Rotated Type	Joint Guide 8-45	M6x20	1	
HAMJ	8-45	Post-Assembly Insertion Center Post 8-45	Joint Guide 8-45	M6x20	1	

Ordering Example: HMJ8-45



Pre-Assembly Insertion Standard Direction Type

HMJR

Pre-Assembly Insertion 90-Degree Rotated Type

HMJR

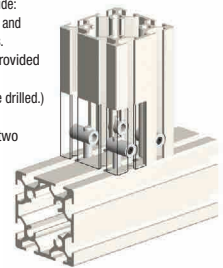
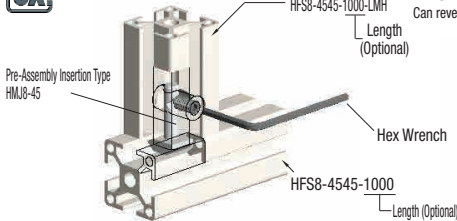
Can reverse tightening direction by 90 degrees.

Connecting extrusions with 2 or more slots on one side: Insert joint guide from the both sides of M type hole, and connect and tighten it with two or more center joints.

For extrusions with three slots, holes are not provided on the center slot. (For extrusions with four rows of slots, all slots are drilled.)

2-slotted extrusions can be connected by using two Center Joint kits.

3-slotted extrusions are connected using two outside slots only.



Features: Center joint installable without alterations. (No holes are required on the mating extrusion.)

Aluminum Extrusions with Built-in Center Joints

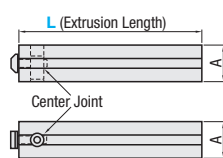


RoHS 10

Part Name	Material	Surface Treatment
Aluminum Extrusion	A6N01SS-T5	Anodize
Center Post	SCS13	-
Joint Guide	SUS304	-
Set Screw	SCM435	Black Oxide Film

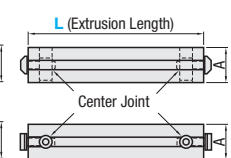
JFSM8-4545L

(Left End Face Center Joint Pre-Inserted Type)

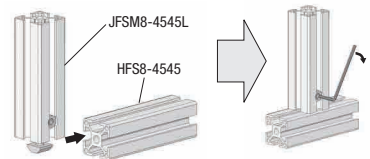


JFSM8-4545W

(Both End Face Center Joints Pre-Inserted Type)



Joint components will be shipped loosely tightened.



Part Number	Joint Component	L	Extrusion	Built-in Joint Component	Quantity	A	Required Wrench for Tightening	Extrusion Unit Price	Joints, Others
		0.5mm Increment		Center Joint				Less than 300mm 300mm or more	
JFSM	8-4545	L (Left End Face only) W (Double End Faces)	HFS8-4545 (P681)	HMJ8-45	1 2	45	For M8		

Part Number: JFSM8-4545L - L, JFSM8-4545L - 1200



Alterations only on this page are available.

Alterations	Code	Spec.		
		Extrusion	Tap	Depth
Right End Face Tapping Applicable to Left End Pre-Inserted Type only.	RTP Right End Face Tapping	8-4545	M12 (Heli-Coil Insert)	18

Alterations	Code	Spec.		
		Extrusion	H	Hole Dia.
Right End Face Wrench Hole Applicable to Left End Pre-Inserted Type only.	RCH RCV	8-4545	22.5	8