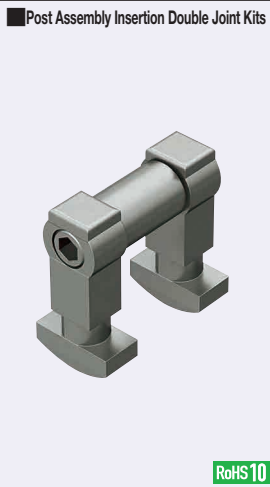


Blind Joint Components

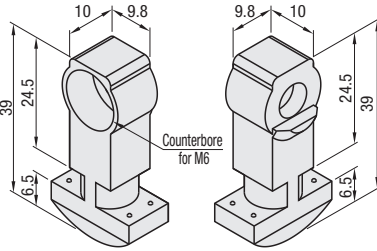
Post Assembly Insertion Double Joint Kits / Parallel Joint Kits for 8 Series (Slot Width 10mm) Aluminum Extrusions

For details of fastening method, see P607.
 Alterations necessary to use this component
 Post-Assy. Insert. Double Parallel
 M Type Hole Alterations L Type Hole Alterations
 P.766 P.767

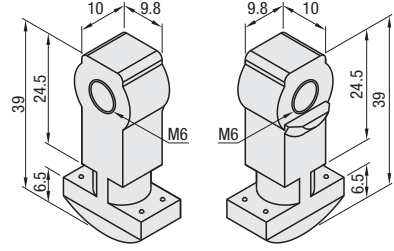


HPJN (Post-Assembly Insertion Double Joints)

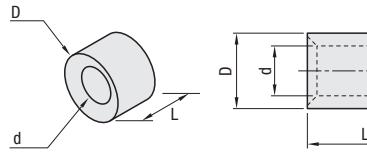
① Post-Assembly Insertion Double Joint A



② Post-Assembly Insertion Double Joint B



③ Joint Pipe



Part Name	Material
Post-Assembly Insertion Double Joint (A, B)	SCS13
Joint Pipe No.8-40	SUS304 Equivalent (Sintered)
Joint Pipe No.8-80	SUS304
Hex Socket Head Cap Screw	SUS304

Part Number		Accessory				Unit Price	Volume Discount Rate
Type	No.	① Post-Assembly Insertion Double Joint A	② Post-Assembly Insertion Double Joint B	③ Joint Pipe	④ Hex Socket Head Cap Screw	Quantity	1 - 19 pc(s)
HPJN	8-40	Post-Assembly Insertion Double Joint A8	Post-Assembly Insertion Double Joint B8	Joint Pipe 8-40	M6x30	1	20-200
	8-80	Post-Assembly Insertion Double Joint A8	Post-Assembly Insertion Double Joint B8	Joint Pipe 8-80	M6x70	1	

③ Joint Pipe

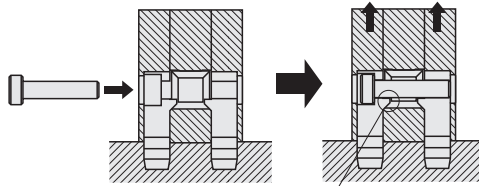
Part Name	L	D	d
Joint Pipe 8-40	15	13	8
Joint Pipe 8-80	55		

For details of fastening method, see P607.

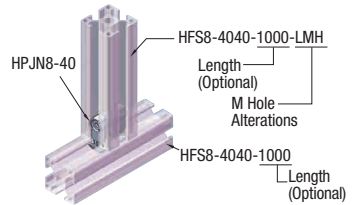
Post Assy. Insert. Double Joint Kit	Applicable Extrusion No.	[Exception] Extrusion Not Available
HPJN8-40	8-4040	Not usable for surfaces
HPJN8-80	8-4080 8-8080	without slots.



• Installation Example



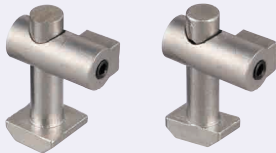
The tapered part of a Joint Tube and the tab of a post-assembly insertion joint create upward lifting force, connecting the extrusions together.



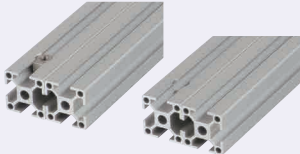
Features: Extrusions can be connected in parallel. Post assembly additions enabling type is also provided.

Parallel Joint Kits

Pre-Assembly Insertion Type Post-Assembly Insertion Type



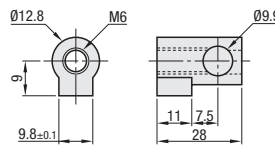
(Ref.) Corner section when using this joint



RoHS10

HLJ
(Parallel Joint Kit Pre-Assembly Insertion Type)
HALJ
(Parallel Joint Kit Post-Assembly Insertion Type)

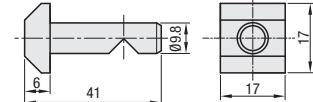
Joint Guide (Component ①)



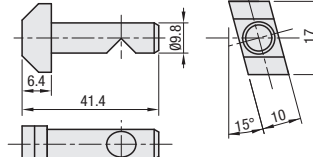
Part Name	Material	Surface Treatment
Pre-Assembly Insertion Parallel Post	SCS13	-
Post-Assembly Insertion Parallel Post	SCS13	-
Joint Guide	SUS304	-
Set Screw	SCM435	Black Oxide Film

Parallel Joints (Component ②)

②-1 Pre-Assembly Insertion Parallel Post



②-2 Post-Assembly Insertion Parallel Post



Part Number		Accessory				Unit Price	Volume Discount Rate
Type	No.	① Parallel Post	③ Joint Guide	④ Set Screw	Quantity	1-99 pc(s)	100-120
HLJ (Pre-Assembly Insertion Type)	8	Pre-Assembly Insertion Parallel Post 8	8	M6x16	1		
HALJ (Post-Assembly Insertion Type)	8	Post-Assembly Insertion Parallel Post 8	8	M6x16	1		

Applicable Extrusion No.	[Exception] Extrusion Not Available
8-4040 ¹⁾ 8-4080 ¹⁾ 8-40120 8-40160	*1. HFSH and HFSC are not applicable since L holes cannot be added.

For details of fastening method, see P607.

Ordering Example Part Number HLJ8

