

# Blind Joint Components

## Center Joint Kits for 8 Series (Slot Width 10mm) Aluminum Extrusions

For details of fastening method, see P.605.  
Alterations necessary to use this component

M Type Hole Alterations  
P.766

**Features:** Requires only one screw for tightening. Work efficiency enhancing anti-rotation type is added.

### Center Joint Kits Pre-Assembly Insertion Type

(Standard Direction) (90-Degree Rotated)



### Center Joint Kits Post-Assembly Insertion Type

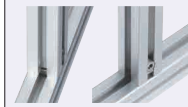


### Center Joint Kits With Rotation Stopper



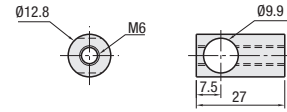
RoHS 10

(Ref.) Corner section when using this joint

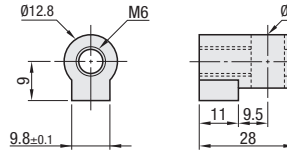


Type	Components (1 pc. each)					
	Joint Guide		Center Post		Set Screw	
	Type	M Material	Type	M Material	Size	M Material
HMJ	Standard	SUS304	Pre-Assembly Insertion Standard Direction	SCS13	NO.8:M6x16	SCM435
HMJR			Pre-Assembly Insertion 90-Degree Rotated			
HAMJ			Post-Assembly Insertion Standard Direction			
HZJ	With Rotation Stopper	SUS304	Pre-Assembly Insertion Standard Direction	SCS13		(Surface Treatment: Black Oxide Film)
HAZJ			Post-Assembly Insertion Standard Direction			

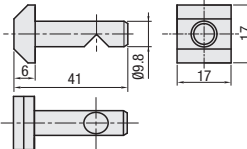
### Joint-Guide (Standard)



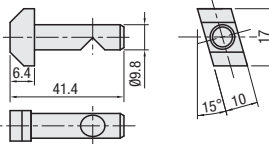
### Joint-Guide (with Rotation Stopper)



### Pre-Assembly Insertion Center Post Standard Direction



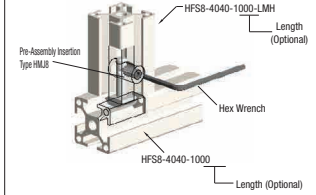
### Post-Assembly Insertion Center Post



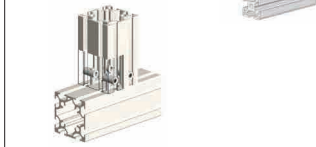
Applicable Extrusion No.				[Exception] Extrusion Not Available	
8-4040*1	8-4080	8-40120	8-40160*2	*1 Curved HFSR8-4040 cannot be used, because Wrench Hole Machining is not allowed.	*2 Cannot be used in the long side direction because standard hole machining is not allowed.



Product Number for the parts shown on the above example (Standard Type).



Pre-Assembly Insertion 90-Degree Rotated Type HMJR  
Can reverse tightening direction by 90 degrees.



2-slotted extrusions can be connected by using two Center Joint kits.

3-slotted extrusions are connected using two outside slots only.

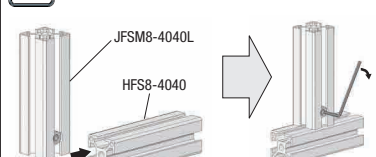
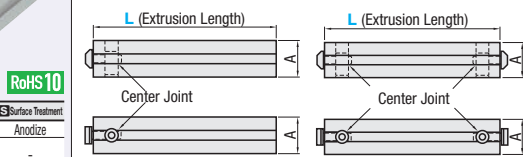
Part Number	Type	No.	Accessory				HMJ	HMJR	HAMJ	HZJ	HAZJ	
			Center Post	Quantity	Joint Guide	Quantity	Set Screw	Quantity	Unit Price	Volume Discount Rate	Unit Price	Volume Discount Rate
HMJ HZJ	Pre-Assembly Insertion Standard Direction Type	8	Pre-Assembly Insertion Center Post 8	1	Joint Guide 8	1	M6x16	1	1-99 pc(s).	100-120	1-99 pc(s).	100-120
HMJR	Pre-Assembly 90-Degree Reversal Type	8	Pre-Assembly Insertion Center Post 8 Rotated	1	Joint Guide 8	1	M6x16	1	-	-	-	-
HAMJ HAZJ	Post-Assembly Insertion Type	8	Post-Assembly Insertion Center Post 8	1	Joint Guide 8	1	M6x16	1	-	-	-	-

Ordering Example  
Part Number  
HMJ8

**Features:** Center joint installable without alterations. (No holes are required on the mating extrusion.)

### Aluminum Extrusions with Built-in Center Joints

JFSM8-4040L (Left End Face Center Joint Pre-Inserted Type)  
JFSM8-4040W (Both End Face Center Joints Pre-Inserted Type)



Part Name	M Material	S Surface Treatment
Aluminum Extrusion	AGN01SS-T5	Anodize
Center Post	SCS13	-
Joint Guide	SUS304	-
Set Screw	SCM435	Black Oxide Film

Joint components will be shipped loosely tightened.

Part Number	Joint Component	L 0.5mm Increment	Extrusion	Built-in Joint Component Center Joint Quantity	A	Required Wrench for Tightening	Extrusion Unit Price	Joints, Others
JFSM	8-4040	L (Left End Face only) W (Double End Faces)	HFS8-4040 (P631)	1 2	40	For M6	Less than 300mm 300mm or more	

Ordering Example  
Part Number - L  
JFSM8-4040L - 1200

Alterations  
Alterations only on this page are available.

Alterations	Code	Spec.		Alterations	Code	Spec.	
		Extrusion	Depth			Extrusion	Hole Dia.
Right End Face Tapping Right End Face Tapping JFSM8-4040L is only applicable to Left End Face Joint Pre-Inserted Type.	RTP	8-4040	36	Right End Face Wrench Hole Applicable to JFSM8-4040L and JFSM8-4040W only.	RCH RCV	8-4040	8