

# Blind Joint Components

## Parallel Joint Kits for 6 Series (Slot Width 8mm) Aluminum Extrusions

Alterations necessary to use this component

L Type Hole Alterations  
 P.767

■ **Features:** Extrusions can be connected in parallel. Post assembly additions enabling type is also provided.

■ **Parallel Joint Kits**  
 Pre-Assembly Insertion Type



■ **Parallel Joints**  
 Post-Assembly Insertion Type



(Ref.) Corner section when using this joint



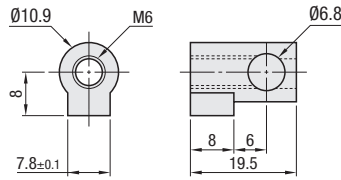
RoHS10

Part Name	Material	Surface Treatment
Pre-Assembly Insertion Parallel Post	SCS13	-
Post-Assembly Insertion Parallel Post		
Joint Guide	SUS304	Black Oxide Film
Set Screw	SCM435	

**HLJ**  
 (Parallel Joint Kits Pre-Assembly Insertion Type)

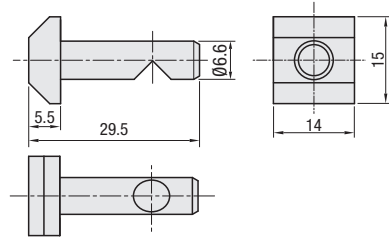
**HALJ**  
 (Parallel Joint Kits Post-Assembly Insertion Type)

■ **Joint Guide**

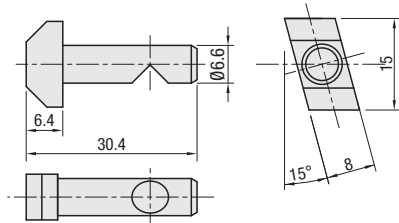


■ **Parallel Joints**

Pre-Assembly Insertion Parallel Post



Post-Assembly Insertion Parallel Post



Part Number		Accessory				Unit Price	Volume Discount Rate		
Type	No.	①② Parallel Post	Quantity	③ Joint Guide	Quantity	④ Set Screw	Quantity	1-99 pc(s)	100~120
<b>HLJ</b> Pre-Assembly Insertion Type	6	Pre-Assembly Insertion Parallel Post 6	1	6	1	M6x12	1		
<b>HALJ</b> Post-Assembly Insertion Type	6	Post-Assembly Insertion Parallel Post 6		6		M6x12			

■ **Extrusions Applicable to This Joint**

Applicable Extrusion No.	[Exception] Extrusion Not Available
6-3030*1 6-3060*1 6-3090 6-30120	*1 HFSH and HFSC are not applicable since L type holes cannot be added.
6-5050 6-50100	
6-6060 6-6090	



Ordering Example

Part Number  
**HLJ6**