

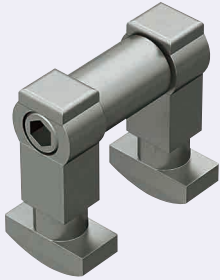
Blind Joint Components

Post Assembly Insertion Double Joint Kits for 6 Series (Slot Width 8mm) Aluminum Extrusions

Alterations necessary to use this component

M Type Hole Alterations
P.766

Post Assembly Insertion Double Joint Kit

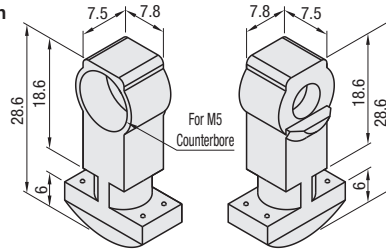


RoHS10

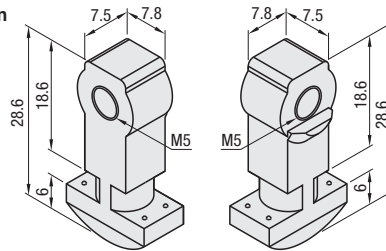
Part Name		Material
Post-Assembly Insertion Double Joint (A, B)		SCS13
Joint Pipe	No.6-30	SUS304 Equivalent (Sintered)
	No.6-50	
	No.6-90	
	No.6-100	
	No.6-120	
Hex Socket Head Cap Screw		SUS304

HPJN (Post-Assembly Insertion Double Joint)

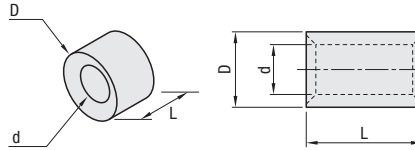
① Post-Assembly Insertion Double Joint A



② Post-Assembly Insertion Double Joint B



③ Joint Pipe

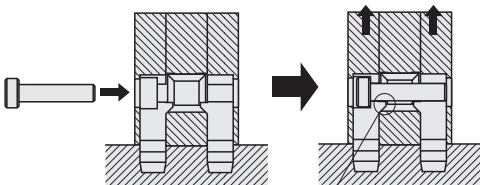


Part Number		Accessory				Unit Price	Volume Discount Rate				
Type	No.	① Post-Assembly Insertion Double Joint A	Quantity	② Post-Assembly Insertion Double Joint B	Quantity	③ Joint Pipe	Quantity	④ Hex Socket Head Cap Screw	Quantity	1 - 19 pc(s)	20 - 200
HPJN	6-30	Post-Assembly Insertion Double Joint A6	1	Post-Assembly Insertion Double Joint B6	1	Joint Pipe 6-30	1	M5x22	1		
	6-60					Joint Pipe 6-60		M5x50			
	6-50					Joint Pipe 6-50		M5x40			
	6-90					Joint Pipe 6-90		M5x80			
	6-100					Joint Pipe 6-100		M5x90			
	6-120					Joint Pipe 6-120		M5x110			

③ Joint Pipe

Part Name	L	D	d
Joint Pipe 6-30	12	11	7
Joint Pipe 6-60	42		
Joint Pipe 6-50	32		
Joint Pipe 6-90	72		
Joint Pipe 6-100	82		
Joint Pipe 6-120	102		

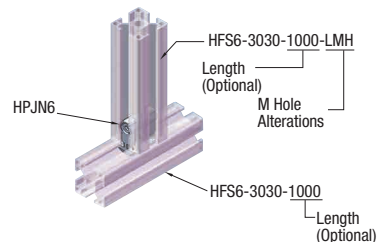
Post Assy. Insert. Double Joint Kit	Applicable Extrusion No.	[Exception] Extrusion Not Available
HPJN6-30	6-3030	Not usable for surfaces without slots.
HPJN6-60	6-3060 6-6060	
HPJN6-50	6-5050 6-50100	
HPJN6-90	6-3090 6-6090	
HPJN6-100	6-50100 6-100100	
HPJN6-120	6-30120 6-60120	



The tapered part of a Joint Pipe and the tab of a post-assembly insertion joint create upward lifting force, connecting the extrusions together.



Installation Example



Part Number
HPJN6-30