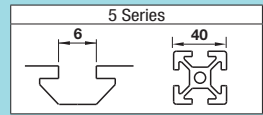


Extruded Brackets - For 2 Slots

For 5 Series (Slot Width 6mm) Aluminum Extrusions

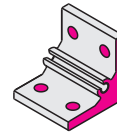
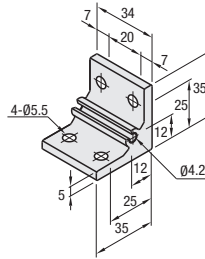


Features: Extrusions with 2 slots (HFS5-4040, etc.) can be connected with one bracket.

Thick Brackets



NBLTD5
HBLTD5
HBLTDB5
(Black Anodize)
CHBLTD5
(Clear Coating)



⚠ Both sides and screw holes of NBLTD5 is not anodized.

Type	Material	Surface Treatment
NBLTD5	A6063S-T5	Clear Anodize ⚠
HBLTD5		Black Anodize
HBLTDB5	A6N01SS-T5	Clear Paint (Anodize + Clear Paint)
CHBLTD5		

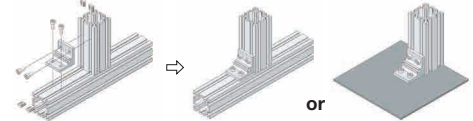
Part Number	Mass (g)	Applicable Screw, T Nut			Allowable Load (N)	Unit Price (1-99 pcs)	Volume Discount Rate (100-200)
		Screw	Quantity	T Nut			
NBLTD5	36	CBM5-10	4	HNNT5-5	4	1470	
HBLTD5							
HBLTDB5*							
CHBLTD5							

* For repairing black anodizing, refer to P.846.



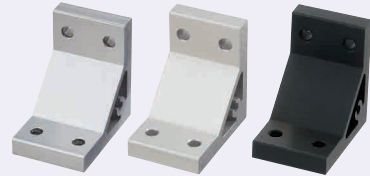
Example

■ Example of HBLTD Connection ■ Can be used for extrusion connection or plate mounting.

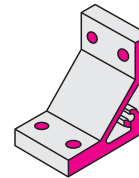
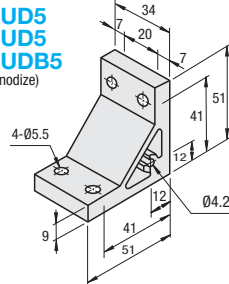


Features: Thick Brackets with increased strength. Recommended for enhancing the strength without increasing procedural steps.

Ultra Thick Brackets



NBLUD5
HBLUD5
HBLUDB5
(Black Anodize)



⚠ Both sides and screw holes of NBLUD5 is not anodized.

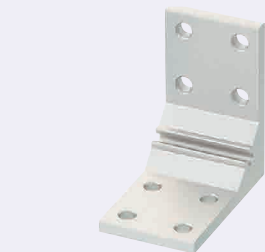
Type	Material	Surface Treatment
NBLUD5	A6063S-T5	Clear Anodize ⚠
HBLUD5		Black Anodize
HBLUDB5	A6N01SS-T5	

Part Number	Mass (g)	Applicable Screw, T Nut			Allowable Load (N)	Unit Price (1-99 pcs)	Volume Discount Rate (100-200)
		Screw	Quantity	T Nut			
NBLUD5	75	CBM5-14	4	HNNT5-5	4	1470	
HBLUD5							
HBLUDB5*							

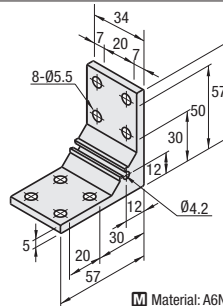
* For repairing black anodizing, refer to P.846.

Features: Brackets for 2-slot extrusions with 4 mounting holes on one side can connect extrusions more securely.

Thick Brackets



HBLTDW5

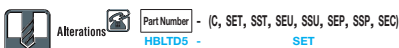


Material: A6N01SS-T5 Surface Treatment: Clear Anodize

Part Number	Mass (g)	Applicable Screw, T Nut			Allowable Load (N)	Unit Price (1-99 pcs)	Volume Discount Rate (100-200)
		Screw	Quantity	T Nut			
HBLTDW5	59	CBM5-10	8	HNNT5-5	8	2156	



Ordering Example
Part Number
HBLTD5



Alterations
Part Number - (C, SET, SST, SEU, SNU, SEP, SSP, SEC)
HBLTD5 - **SET**

Alterations	Code	Spec.	Applicable Bracket
Mounting Hole Alteration for Cover	C	Adds taps on a bracket for cover mounting. (M5 on Both Sides, Depth 15mm) (Mounting Screw HCBM on P.754)	NBLTD5
			HBLTD5
			CHBLTD5
			NBLUD5
			HBLUD5
			HBLTDW5

Alterations	Code	Spec.	Applicable Bracket
Applicable Screws and Nuts Set	SET	Applicable screws and nuts for fixing the brackets on extrusions come in a set. (Adds to the bracket price.) (Ex.) When HBLTD5 is specified: Code Screw Nut SET CBM5-10 HNNT5-5 SST SCB5-10 HNNTB55-5 SEU CBM5-10 HNNTU5-5 SSU SCB5-10 SHNTU5-5 SEP CBM5-10 HNTP5-5 SSP SCB5-10 SHNTP5-5 SEC HCBS75-12 HNNT15-5 ⚠ When specifying other than HBLTD5, check for the applicable screws and nuts.	
	SST		NBLTD5
	SEU		HBLTD5
	SSU		HBLTDB5
	SEP		CHBLTD5
	SSP		NBLUD5
	SEC		HBLUD5
			HBLUDB5
			HBLTDW5

⚠ Screws for black anodized brackets are HCBMTB (Trivalent Chromate Black) on P.751.
⚠ Included Screw is not RoHS compliant when -SET, -SEU or -SEP other than black anodized brackets is specified.