

Hex Socket Head Cap Screws / Hex Socket Head Cap Screws with Hole

With Threadlocker Adhesive

Hex Socket Head Cap Screws - With Threadlocker Adhesive



RoHS 10

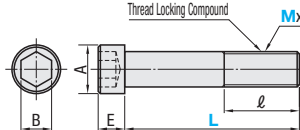
Type	Material	Surface Treatment	Hardness	Strength Class
LB	SCM435	Black Oxide	38-43HRC	12.9
SUSLB	SUS304 Equivalent	-	-	A2-70

MxP	A	E	B
4x0.7	7	4	3
5x0.8	8.5	5	4
6x1.0	10	6	5
8x1.25	13	8	6
10x1.5	16	10	8
12x1.75	18	12	10

* The strength class signifies the screw's tensile strength.

(Ex) 12.9
 This indicates that the minimum value for yielding point or proof stress is 90% of tensile strength.
 This indicates that the minimum value of tensile strength is 1220N/mm².

(Ex) A2-70
 This indicates that the minimum value of tensile strength is 700N/mm².
 The steel class is A2 (Austenitic Stainless Steel)



Loosening Prevention Treatment

This treatment applies the special plastic excellent in elasticity, abrasion resistance and oil resistance to the thread grooves. It can be used repeatedly with a lubricant. The effect is most pronounced at the first use, and will gradually decrease after that.

Part Number	Type	M-L	ℓ	LB		SUSLB	
				Unit Price	Volume Discount Rate	Unit Price	Volume Discount Rate
LB SUSLB	Studs - Fully Threaded	4-8	20				
		10					
		12					
		15					
		20					
		25					
LB SUSLB	Studs - Fully Threaded	5-10	22				
		12					
		15					
		20					
		25					
		30					
LB SUSLB	Studs - Fully Threaded	6-10	24				
		15					
		20					
		25					
		30					
		40					

⚠ No specifications available for sizes with no prices shown. ⚠ For orders larger than indicated quantity, please check with WOS.

Part Number	Type	M-L	ℓ	LB		SUSLB	
				Unit Price	Volume Discount Rate	Unit Price	Volume Discount Rate
LB SUSLB	Studs - Fully Threaded	8-15	28				
		25					
		30					
		35					
		40					
		45					
		50					
		55					
		60					
		LB SUSLB	Studs - Fully Threaded				
25							
30							
35							
40							
45							
LB SUSLB	Studs - Fully Threaded	12-25	36				
		30					
		35					
		40					
		45					
		50					

⚠ No specifications available for sizes with no prices shown. ⚠ For orders larger than indicated quantity, please check with WOS.

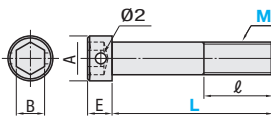
Ordering Example
 Part Number
 LB8-40

Hex Socket Head Cap Screws with Hole



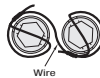
RoHS 10

Type	Material	Surface Treatment	Hardness	Strength Class
CBLH	SCM435	Black Oxide	22-32HRC	B.8 Equivalent
SCBLH	SUS304 Equivalent	-	-	A2-70 Equivalent



Ex Example

⚠ Put wire through the hole in the screw head to prevent the screw from loosening or falling off.



Part Number	Type	M-L	ℓ	CBLH		SCBLH	
				Unit Price	Volume Discount Rate	Unit Price	Volume Discount Rate
CBLH SCBLH	Studs - Fully Threaded	6-10	24				
		15					
		20					
		25					
		30					
		35					
		40					
		45					
		50					
		CBLH SCBLH					
15							
20							
25							
30							
35							
CBLH SCBLH	Studs - Fully Threaded	10-20	32				
		25					
		30					
		35					
		40					
		45					
CBLH SCBLH	Studs - Fully Threaded	12-25	36				
		35					
		40					
		45					
		50					

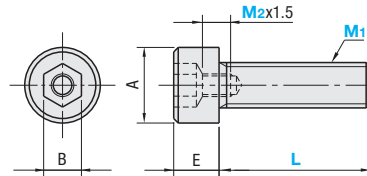
⚠ No specifications available for sizes with no prices shown. ⚠ For orders larger than indicated quantity, please check with WOS.

Tapped Socket Head Screws



RoHS 10

Type	Material	Surface Treatment	Strength Class
TSCB	SUS304 Equivalent	-	A2-50 Equivalent



⚠ Cap Screws with Tapped Hole are Coarse Full thread.

Part Number	Type	M2 (Coarse) (Tap Size)	A	E	B	TSCB		
						Unit Price	Volume Discount Rate	
TSCB	8-10	3	10	6	5			
								12
								16
								20
								25
								30
	10-16	4	16	10	8			
								20
								25
	12-20	6	18	12	10			
								20
								24
16-30	8	24	16	14				
					35			

⚠ For orders larger than indicated quantity, please check with WOS.

Ordering Example
 Part Number - M2
 CBLH8-12
 SCBLH8-40
 TSCB10-20 - 5

Ex Example

Space Saving
 It can be used when space is limited or when two or more holes in installation seat are not needed.

