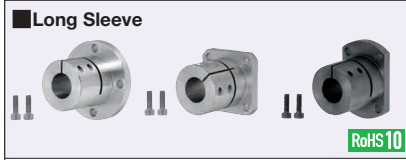


# Shaft Supports - Flanged Mount, Slit

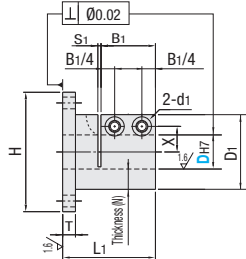
## Long Sleeve

■ **Features:** Long sleeve enhances the retaining force.

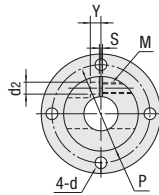
🔗 **For products other than catalog specifications, see ☒ P.131.**



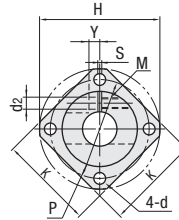
Type	Round Flanged	Square Flanged	Compact Flanged	Material	Surface Treatment	Accessory
Long Sleeve	STHWRBL	STHWSBL	STHCBL	S45C	Black Oxide	Hex Socket Head Cap Screw 2 pcs.
	STHWRL	STHWSL	STHWCL	Equivalent	Electroless Nickel Plating	Hex Socket Head Cap Screw 2 pcs. (SUS)
	SSTHWRL	SSTHWSL	SSTHWCL	SUS304	-	-



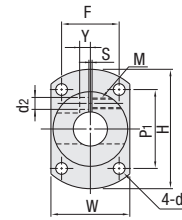
■ **Round Flanged**



■ **Square Flanged**



■ **Compact Flanged**



6.3 / (1.6)

Part Number		Sleeve Thickness (N)	L <sub>1</sub>	D <sub>1</sub>	H	T	B <sub>1</sub>	P	K	W	P <sub>1</sub>	F	d	S	S <sub>1</sub>	X	Y	d <sub>1</sub>	d <sub>2</sub>	M	Included Screw M x Length
Type	DH7																				
Round Flanged    Square Flanged    Compact Flanged	12	+0.018 0	10	33	32	52	20	42	40	34	35	25	4.5	1.5	11	4	9	5.6	M5	M5x12	
	16		9.5	45	35	56															6
	20	+0.021 0	10	48	40	64	8	52	50	42	43	30	6.6	1.5	14	6	9	5.6	M5	M5x16	
	25			57	45	69															57
	30	+0.025 0	12.5	60	55	79	10	67	60	57	50	45	9	2	20	10	12	6.6	M6	M6x20	
	35			72	60	94															77
	40	+0.025 0	15	82.5	70	104	12	36	87	81	76	67	55	9	2	26	13	14	9	M8	M8x26
	50			17.5	97.5	85															

D	Unit Price								
	Round Flanged			Square Flanged			Compact Flanged		
	STHWRBL	STHWRL	SSTHWRL	STHWSBL	STHWSL	SSTHWSL	STHCBL	STHWCL	SSTHWCL
12									
16									
20									
25									
30									
35									
40									
50									



Ordering Example    Part Number  
SSTHWSL12