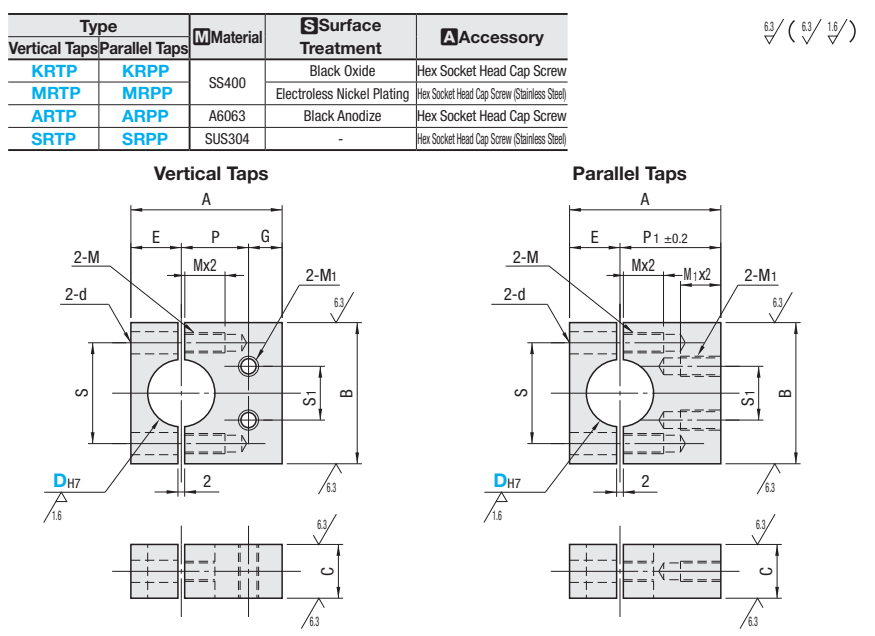


Strut Clamps

Vertical / Parallel Taps, Split

■ **Features:** Post-assembly mounting onto Posts for Stands in structures.

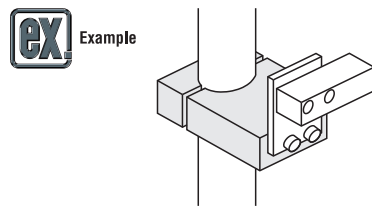


Part Number		A	B	C	E	P	P1	G	S	d	M (Coarse)	S1	M1 (Coarse)	
Vertical Taps Parallel Taps KRTP KRPP MRTP MRPP ARTP ARPP S RTP S RPP	10	+0.015 0	24	25	9	8	11	16	5	18	4.5	M4	8	M4
	12	+0.018 0	28	28		10	13	18		20				
	15	+0.021 0	37	35	12	12	17	25	10	24	6.6	M5	12	M5
	20	+0.021 0	45	45	16	15	20	30		30		16		
	25	+0.021 0	51	50	19	18	23	33		35	20	M6	25	M6
	30	+0.025 0	60	60		23	27	37		44	9	M8	28	M8
	35	+0.025 0	66	65	22	26	30	40	50					

⚠ DH7 tolerance is before the slit machining. ⚠ Bore diameter 35 is not available in ARTP type.

Ordering Example

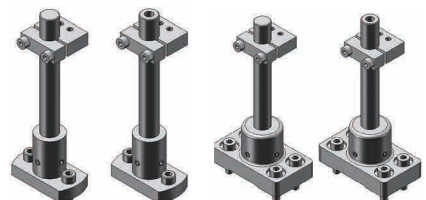
Part Number
KRTP15
MRPP20



ex Example Combination of these app. examples can be selected on our website. Selection Procedure Details **SE P87**

e-Catalog Search Keyword

* Enter the search keyword in the search box on e-Catalog. The search result will be shown in "Modular Assembler" area.



Unit Price						Included Screw	
D	KRTP KRPP	ARTP	ARPP	MRTP MRPP	S RTP S RPP	D	Included Screw
10						10	M4-15
12						12	M4-18
15						15	M5-20
20						20	M6-25
25						25	M6-30
30						30	M8-35
35		-				35	M8-40

2 pcs.

⚠ Bore diameter 35 is not available in ARTP type.

Alterations **Part Number** - (ALW)
ARTP20 - ALW

Alteration	Code	Spec.
Clear Anodize	ALW	Changes ARTP and ARPP from black anodize to clear anodize. ⚠ Applicable to ARTP and ARPP. ⚠ Stainless steel screws are included.