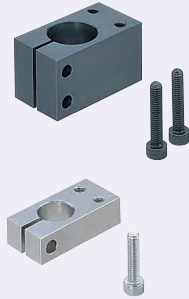


# Strut Clamps

## Vertical Taps

**Features:** Clamp type of mounting a device perpendicular to post.

### Vertical Taps

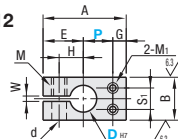


RoHS10

Type				Material	Surface Treatment	Accessory
Pitch Selectable		Pitch Configurable				
Standard	Thin	Standard	Thin			
KMN	KMNU	KML	KMLU	Steel for General Structure	Black Oxide	Hex Socket Head Cap Screw
MMN	MMNU	MML	MMLU		Electroless Nickel Plating	Hex Socket Head Cap Screw (Stainless Steel)
AMN	AMNU	-	-	Aluminum Alloy	Black Anodize	Hex Socket Head Cap Screw
-	WMNU	-	-		Clear Anodize	Hex Socket Head Cap Screw (Stainless Steel)
SMN	SMNU	-	-	SUS304	-	-

⚠ CB screws are included with the black oxide and black anodized products, and SCB screws are included with the other products.

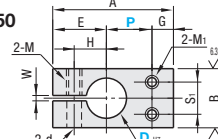
D=8-12



Standard

Thin

D=15-50



6.3 / (6.3 / 1.6)

· P Dimension Tolerance: JIS B 0405 Medium Class (P2286)

### Pitch Selectable

Part Number		DH7	P	A	B	C	C <sub>1</sub>	E	G	H	S <sub>1</sub>	M <sub>1</sub>	S	W	M	d				
Type	Type																			
Standard KMN MMN AMN SMN (D≤30)	Thin KMNU MMNU AMNU WMNU SMNU (D≤30)	8	+0.015	10	29	12	12	-	14	5	8	6	M3	-	2	M5	5.5			
		10	0	11	31	16	16	9	15		9	8	M4	-						
		12	0	13	34	-	-	-	16		10	-	-	-						
		15	+0.018	17	45	22	22	-	12	20	8	12	12	M5		12				
		16	0	20	52	28	28	16	22	20	10	15	16	M6		14				
		20	+0.021	23	58	32	32	-	25	20	10	18	20	M6		16				
		25	0	27	66	40	40	19	29	20	10	21	25	M8		20				
		30	0	30	72	45	45	22	32	20	10	24	28	M8		20				
		35	+0.025	35	79	50	50	25	34	10	10	26	30	M8		20		2	M8	9
		40	0	45	103	65	65	32	43	15	15	33	38	M10		32		3	M10	11

⚠ For the available sizes, refer to the price list. ⚠ D=16 is only applicable to Standard Pitch (except Clear Anodize). ⚠ DH7 tolerance is before the slit machining.

⚠ For mating, g6, f8 shaft tolerances are recommended. Tightening with a long wrench is recommended.

### Pitch Configurable

Part Number		DH7	P Selection	A	B	C	C <sub>1</sub>	E	G	H	S <sub>1</sub>	M <sub>1</sub>	S	W	M	d		
Type	Type																	
Standard KML MML	Thin KMLU MMLU	10	+0.015	20 30	A=P+E+G	16	16	9	15	5	9	8	M4	-	2	M5	5.5	
		12	0	25 30		22	22	12	20		8	12	12	M5				12
		15	+0.018	30 40		28	28	16	22		10	15	16	M6				14
		20	+0.021	40 50		32	32	-	25	20	18	20	M6	16				
		30	0	50 50		40	40	19	29	20	21	25	M8	20				
KML	KMLU	40	+0.025	40 50	A=P+E+G	50	50	25	34	10	26	30	M8	20	2	M8	9	

⚠ For the available sizes, refer to the price list. ⚠ DH7 tolerance is before the slit machining.

⚠ For mating, g6, f8 shaft tolerances are recommended. Tightening with a long wrench is recommended.



Ordering Example

Part Number

- P

KMN10  
KMLU20

- 30

### Included Screw

D	Unit Price												
	Pitch Selectable						Pitch Configurable						
	Standard			Thin			Standard			Thin			
	KMN	MMN	AMN	SMN	KMNU	MMNU	AMNU	WMNU	SMNU	KML	MML	KMLU	MMLU
8					-	-	-	-	-	-	-	-	-
10					-	-	-	-	-	-	-	-	-
12					-	-	-	-	-	-	-	-	-
15					-	-	-	-	-	-	-	-	-
16					-	-	-	-	-	-	-	-	-
20					-	-	-	-	-	-	-	-	-
25					-	-	-	-	-	-	-	-	-
30					-	-	-	-	-	-	-	-	-
35					-	-	-	-	-	-	-	-	-
40					-	-	-	-	-	-	-	-	-
50					-	-	-	-	-	-	-	-	-

D	Included Screw (Thin Type has 1 screw on each side.)
8	M5-12, 1 pc.
10	M5-15, 1 pc.
12	M5-15, 1 pc.
15	M5-20, 2 pcs.
16	M5-20, 2 pcs.
20	M6-25, 2 pcs.
25	M6-30, 2 pcs.
30	M8-35, 2 pcs.
35	M8-40, 2 pcs.
40	M8-45, 2 pcs.
50	M10-55, 2 pcs.