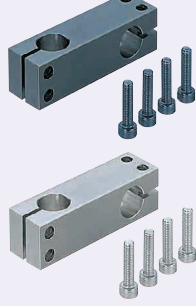


Strut Clamps

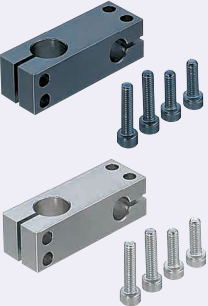
Equal / Unequal Dia., Perpendicular Configuration, Hole Pitch Selectable

■ Features: Selectable shaft pitch between two Posts for Stands.

■ Equal Dia., Perpendicular Configuration, Hole Pitch Selectable



■ Unequal Dia., Perpendicular Configuration, Hole Pitch Selectable

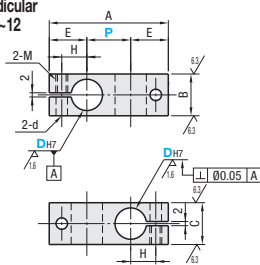


RoHS10

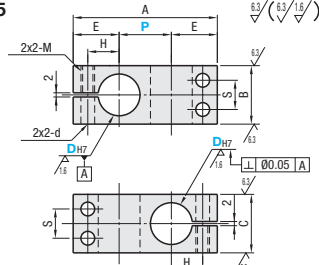
Type		M	S	A
Equal Dia., Perpendicular Configuration	Unequal Dia., Perpendicular Configuration	Material	Surface Treatment	Accessory
KMKC	KMKD	Steel for General Structure	Black Oxide	Hex Socket Head Cap Screw
MMKC	MMKD		Electroless Nickel Plating	Hex Socket Head Cap Screw (Stainless Steel)
AMKC	AMKD	Aluminum Alloy	Black Anodize	Hex Socket Head Cap Screw
SMKC	SMKD	SUS304	-	Hex Socket Head Cap Screw (Stainless Steel)

⊕ CB screws are included with the black oxide and black anodized products, and SCB screws are included with the other products.

Equal Dia. Perpendicular Configuration D=6-12

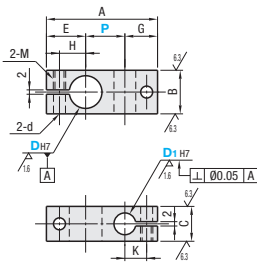


D=15-35

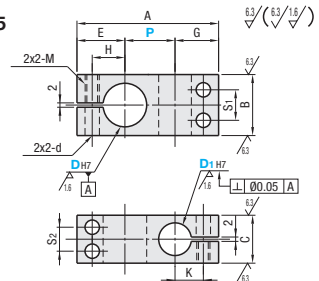


• P Dimension Tolerance: JIS B 0405 Medium Class (P2286)

Unequal Dia., Perpendicular Configuration D=8-12



D=15-35



• P Dimension Tolerance: JIS B 0405 Medium Class (P2286)

■ Equal Dia., Perpendicular Configuration, Hole Pitch Selectable

Part Number		P Selection		A	B	C	E	H	S	M	d								
Type	D _{H7}			A=P+(2xE)	10	10	12	7	-	M4	4.5								
KMKC MMKC AMKC SMKC	6	+0.012	10 15 20									12	12	14	8	-	-	M5	5.5
	8	+0.015	10 15 20 25									16	16	15	9	-	-		
	10	0	15 20 25 30									22	22	18	12	11	-		
	12	+0.018	20 25 30 40									28	28	22	15	14	-	M6	6.6
	15	0	25 30 40 50									32	32	25	18	16	-		
	20	+0.021	30 40 50 75									40	40	29	21	20	-	M8	9
	25	0	50 75 100 150									45	45	32	24	24	-		
	30	+0.025																	
	35	+0.025																	

⊕ For the available sizes, refer to the price list. ⊕ The tolerance and perpendicularity of D_{H7} are before slitting.
⊕ For mating, g6, f8 shaft tolerances are recommended. Tightening with a long wrench is recommended.

■ Unequal Dia., Perpendicular Configuration, Hole Pitch Selectable

Part Number		D _{1H7}		P Selection		A	B	C	E	G	H	K	S ₁	S ₂	M	d											
Type	D _{H7}					A=P+E+G	12	9	13	12	8	7	-	-	M4	4.5											
KMKD MMKD AMKD SMKD	8	+0.015	6	+0.012	10 15 20												16	12	15	14	9	8	-	-	-	M5	5.5
	10	0	8	+0.015	15 20 25												16	16	15	10	9	-	-	-	-		
	12	+0.018	10	0	15 20 25 30												22	18	15	12	10	11	9	-	-		
	15	0			20 25 30 40												28	22	20	15	13	14	11	-	-	M6	6.6
	20	+0.021	15	+0.018	25 30 40 50												32	25	20	18	13	16	14	-	-		
	25	0			30 40 50 75												40	30	29	24	21	16	20	15	-	M8	9
	30	+0.021	20	+0.021	50 75 100 150												45	35	32	27	24	19	24	20	-		
	35	+0.025	25	0																							

⊕ D Dimension for SMKD is available up to 30. ⊕ D Dimension 8 is not available for AMKD and SMKD. ⊕ The tolerance and perpendicularity of D_{H7} and D_{1H7} are the tolerances before slitting.
⊕ For mating, g6, f8 shaft tolerances are recommended. Tightening with a long wrench is recommended.

Ordering Example

Part Number	-	D ₁	-	P
KMKC10	-	20	-	
MMKD20	-	15	-	30

■ Included Screw

D	Included Screw	
	Equal Dia., Perpendicular Configuration	Unequal Dia., Perpendicular Configuration
6	M4-10, 2 pcs.	-
8	M5-12, 2 pcs.	M4-B/M4-12, 1 pc. each
10	M5-15, 2 pcs.	M5-12/M5-10, 1 pc. each
12	M5-15, 2 pcs.	M5-20, 2 pcs.
15	M5-20, 4 pcs.	M5-20/M5-15, 2 pcs. each
20	M6-25, 4 pcs.	M6-25/M6-20, 2 pcs. each
25	M6-30, 4 pcs.	M6-30/M6-25, 2 pcs. each
30	M8-35, 4 pcs.	M8-35/M8-30, 2 pcs. each
35	M8-40, 4 pcs.	M8-40/M8-35, 2 pcs. each

D	Unit Price							
	Equal Dia., Perpendicular Configuration				Unequal Dia., Perpendicular Configuration			
	KMKC	MMKC	AMKC	SMKC	KMKD	MMKD	AMKD	SMKD
6								
8								
10								
12								
15								
20								
25								
30								
35								