

[High Precision] Combination Stages

■ **Features:** Lightweight XYZ-Axis Cross Roller Stages made of aluminum alloy. Choose from combinations of XY-Axis profile heights and Z-axis stroke requirements.

■ Combination Stages



XYZPG



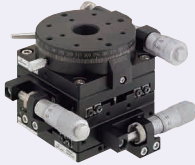
XYZLPG



XYZLSPG

■ **Features:** Combination Stages of Cross Roller as the base and Rotary/Goniometer Stages.

■ Combination Stages



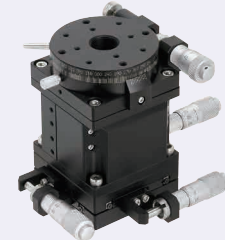
① XYRPG



③ XYRSPG



② XYZLRPG



④ XYZLRSPG

☒ XY-Axis and Rotary Stage integrated P1991

Part Number Type	No.	Stage Configuration		Stage Surface (mm)	External Dimension (mm)			Travel Distance (mm)			Load Capacity (N)	Weight (kg)	Unit Price
		Bottom	Top		W	D	H	X	Y	Z			
XYZPG	40	XYPG40 (P.1943)	ZPG40 (P.1968)	40x40	84.5	77.5	173.5	±6.5	±6.5	±6.5	9.8	0.48	
	60	XYPG60 (P.1943)	ZPG60 (P.1968)	60x60	98.5	91.5	178.5				19.6	0.95	
	80	XYPG80 (P.1943)	ZPG80 (P.1968)	80x80	149.5	135	236	±12.5	±12.5	±12.5	49.0	1.80	
XYZLPG	40	XYPG40 (P.1943)	ZLPG40 (P.1973)	40x40	96	77	80			±3.0	9.8	0.48	
	60	XYPG60 (P.1943)	ZLPG60 (P.1973)	60x60	116.5	91.5	95	±6.5	±6.5		39.2	1.12	
	80	XYPG80 (P.1943)	ZLPG80 (P.1973)	80x80	150	135	95	±12.5	±12.5	±5.0	29.4	2.00	
XYZLSPG	40	XYSPG40 (P.1945)	ZLPG40 (P.1973)	40x40	98.5	80.5	62			±3.0	7.8	0.40	
	60	XYSPG60 (P.1945)	ZLPG60 (P.1973)	60x60	120.5	96.5	77	±6.5	±6.5		23.5	1.00	
	80	XYSPG80 (P.1945)	ZLPG80 (P.1973)	80x80	151	126	77	±12.5	±12.5	±5.0	29.4	1.70	

① For detailed dimensions, material and characteristics, see the CAD data and the catalog page for each stage.

② For included screw sizes, see the pages for the bottom stages.

③ Knob Cover HDCVR13 (Sold Separately): Ø13 micrometer knob can be increased in diameter by installing the cover. ☒ P2004

④ Extension Cover HDEXT13 (Sold Separately): Ø13 micrometer head knob can be extended. ☒ P2004

Combinations of Cross Roller stages listed in this catalog.

Part Number Type	No.	Stage Configuration			Stage Surface (mm)	External Dimension (mm)			Travel Distance (mm)			Load Capacity (N)	Weight (kg)	Unit Price
		Bottom	Middle	Top		W	D	H	X	Y	Z			
① XYRPG (XY-Axis + Rotary)	38	XYPG40 (P.1943)	RPG38 (P.1982)	-	Ø38	84.5	81.5	60			-	9.8	0.37	
	60	XYPG60 (P.1943)	RPG60 (P.1982)	-	Ø60	98.5	95.5	65	±6.5	±6.5	Coarse 360°	29.4	0.78	
	85	XYPG80 (P.1943)	RPG80 (P.1982)	-	Ø85	149.5	136	65	±12.5	±12.5	Fine Feed ±5°	39.2	1.48	
② XYZLRPG (XY-Axis + Horizontal Surf. Z-Axis + Rotary)	38	XYPG40 (P.1943)	ZLPG40 (P.1973)	RPG38 (P.1981)	Ø38	96	81.5	100			±3.0	8.9	0.57	
	60	XYPG60 (P.1943)	ZLPG60 (P.1973)	RPG60 (P.1981)	Ø60	116.5	95.5	120	±6.5	±6.5	Coarse 360°	29.4	1.40	
	85	XYPG80 (P.1943)	ZLPG80 (P.1973)	RPG85 (P.1981)	Ø85	149.5	136	120	±12.5	±12.5	Fine Feed ±5°	24.7	2.48	
③ XYRSPG (Low Profile XY-Axis + Rotary)	38	XYSPG40 (P.1945)	RPG38 (P.1982)	-	Ø38	98.5	82	42			-	8.8	0.29	
	60	XYSPG60 (P.1945)	RPG60 (P.1982)	-	Ø60	102.5	98	47	±6.5	±6.5	Coarse 360°	26.4	0.68	
	85	XYSPG80 (P.1945)	RPG80 (P.1982)	-	Ø85	151	132	47	±12.5	±12.5	Fine Feed ±5°	34.3	1.18	
④ XYZLRSPG (Low Profile XY-Axis + Horizontal Surf. Z + Rotary)	38	XYSPG40 (P.1945)	ZLPG40 (P.1973)	RPG38 (P.1981)	Ø38	98	82	82			±3.0	6.8	0.49	
	60	XYSPG60 (P.1945)	ZLPG60 (P.1973)	RPG60 (P.1981)	Ø60	120.5	98	102	±6.5	±6.5	Coarse 360°	20.6	1.28	
	85	XYSPG80 (P.1945)	ZLPG80 (P.1973)	RPG85 (P.1981)	Ø85	151	132	102	±12.5	±12.5	Fine Feed ±5°	22.5	2.18	

① For detailed dimensions, material and characteristics, see the CAD data and the catalog page for each stage.

② For included screw sizes, see the pages for the bottom stages.

③ Knob Cover HDCVR13 (Sold Separately): Ø13 micrometer knob can be increased in diameter by installing the cover. ☒ P2004

④ Extension Cover HDEXT13 (Sold Separately): Ø13 micrometer head knob can be extended. ☒ P2004



Ordering
Example

Part Number
XYZRPG38