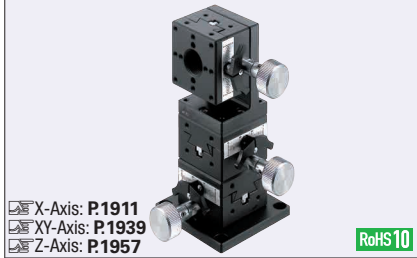


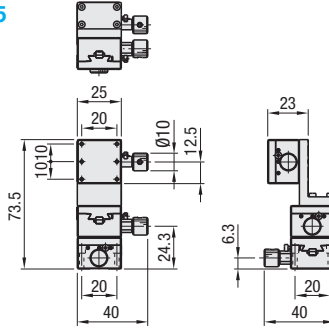
# [High Precision] Dovetail Slide, Rack & Pinion / XY: Feed Screw, Z: Rack & Pinion

■ **Features:** Dovetail Slide XYZ-Axis Stages with approx.18mm of travel per rotation.

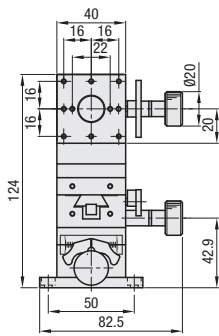
## ■ XYZ-Axis, Rack & Pinion



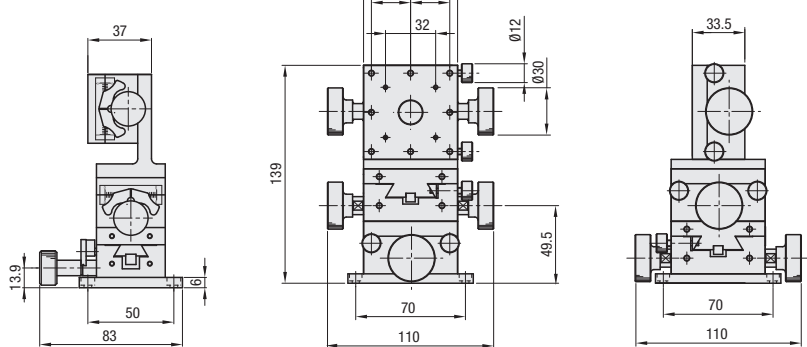
## XYZFG25



## XYZFG40



## XYZFG60



Part Number	Stage Configuration	Stage Surface	Travel Distance (mm)			Load Capacity (N)	Weight (kg)	Accessory (4 pcs.)	Unit Price
			X	Y	Z				
<b>25</b>	XYFG25	ZFG25	25x25	±5	±5	±5	6.9	0.29	SCB2-12
<b>40</b>	XYFG40	ZFG40	40x40	±10	±10	±10	14.7	0.61	SCB4-6
<b>60</b>	XYFG60	ZFG60	60x60	±20	±20	+20	19.6	1.79	SCB4-6

Ordering Example **Part Number**  
XYZFG25

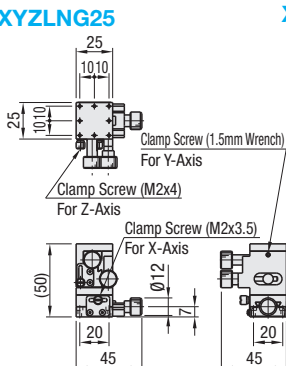
☒ For dimension details, material and characteristics, see the CAD data and the catalog page for each stage.  
☒ XYFG P.1939, ☒ ZFG P.1957

■ **Features:** XYZ-Axes Stages with a vertically moving horizontal surface Z-axis.

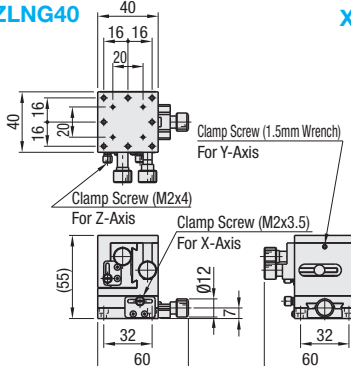
## ■ XY + Horizontal Surface Z-Axis



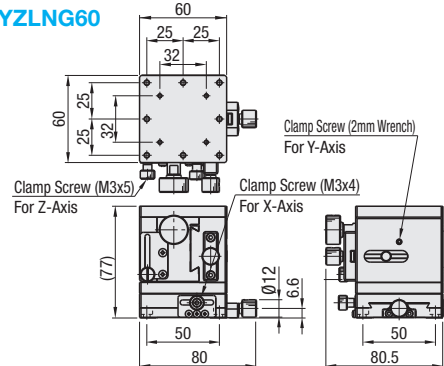
## XYZLNG25



## XYZLNG40



## XYZLNG60



Part Number	Stage Configuration	Stage Surface	Travel Distance (mm)			Load Capacity (N)	Weight (kg)	Accessory (4 pcs.)	Unit Price
			X	Y	Z				
<b>25</b>	XEG25-R	XZLNG25	25x25	±5	±5	+10	9.8	0.24	SCB2-8
<b>40</b>	XEG40-R	XZLNG40	40x40	±7	±7	+7	0.70	SCB3-6	
<b>60</b>	XEG60-R	XZLNG60	60x60	±9	±10	+26	1.22	SCB4-6	

Ordering Example **Part Number**  
XYZLNG25

☒ For detailed dimensions, material and characteristics, see the CAD data and the catalog page for each stage. ☒ XEG: ☒ R P.1897, ☒ XZLNG P.1992