

[Simplified Adjustments] Z-Axis, Push Screw

Features: Economical product configured for Z-axis use by adding a bracket to a push screw type X-axis stage. The unit is more compact and has finer feeding characteristic compared to the Feed Screw Type on P.1952-. Utilize for light loads.

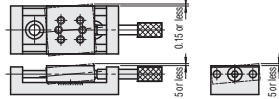
Z-Axis, Push Screw



- X-Axis: P.1893
- XY-Axis: P.1929 Travel per Rotation: 0.5mm

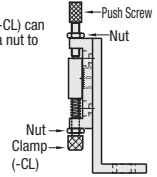
Accuracy Standards

There are some mechanical clearances as shown below, and not recommended for positioning applications requiring accuracies.



One Point

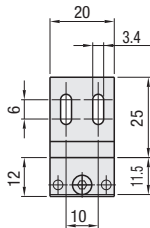
The push screw and clamp (Alterations: -CL) can be reinforced by combining with an extra nut to form a double-nut arrangement.



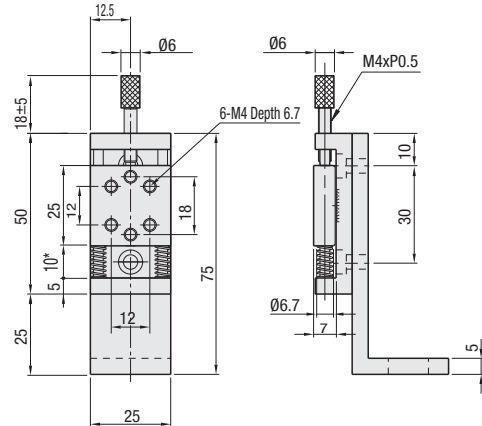
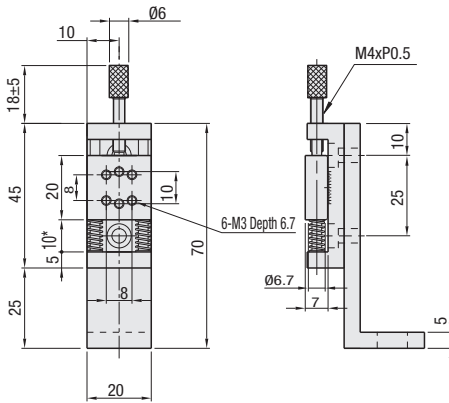
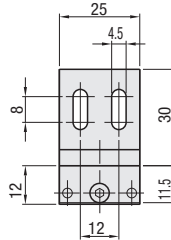
Type	Main Body	Shaft	Spring	Push Screw	Accessory
	M Material S Surface Treatment	M Material	M Material	M Material	
ZKNG	Aluminum Alloy Black Anodize	SUS303	SUS304	S45C (Electroless Nickel Plating)	Hex Socket Low Head Cap Screw (CBS4-6) 2 pcs.

* Dimensions when scale is set at 0

ZKNG20

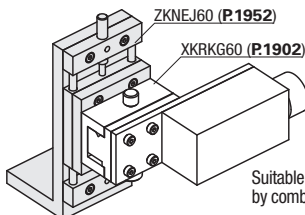


ZKNG25



Part Number	Stage Surface	Travel Distance	Load Capacity	Weight	Unit Price
Type	No.	(mm)	(mm)	(N)	(kg)
ZKNG	20	20x20	±5	0.05	
	25	25x25		0.07	

Travel per Rotation: 0.5mm Minimum Graduation: 0.5mm



Suitable for low magnification camera XZ-axis adjustments by combining with an X-Axis Rack & Pinion Unit on P.1902.



Alteration	Opposite Clamp Bolt
Spec.	Opposing clamp screw for table immobilizing (M4, Pitch 0.7) will be included.
Code	CL