

[Simplified Adjustments] XY-Axis, Feed Screw Standard/Large Handles

Features: Feed screw units are combined into XY arrangements. Operability improving large handles are available.

XY-Axis

X-Axis **P1894**
Z-Axis **P1952**

Travel per Rotation 0.7mm

RoHS 10

Accuracy Standards

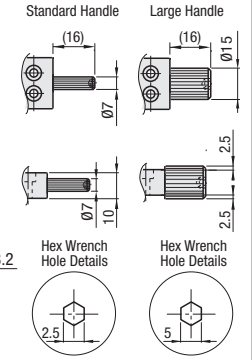
Not recommended for precise positioning due to its clearance shown on the left. Values are for single-axis configuration.

One Point

Long stroke moves can be made easily with use of a ball-point hex wrench.

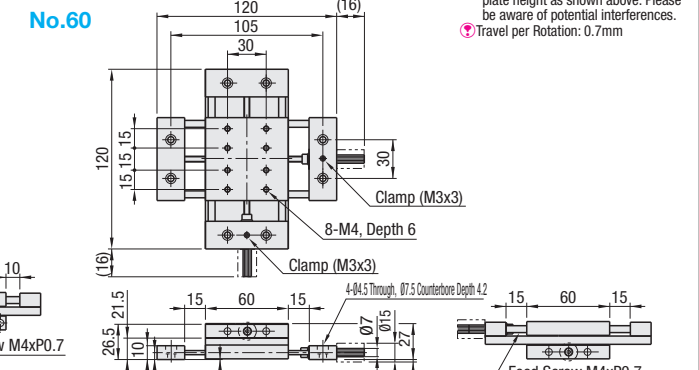
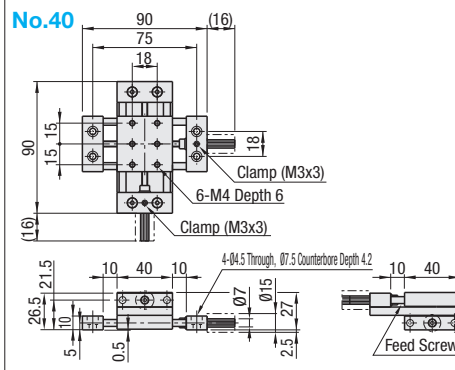
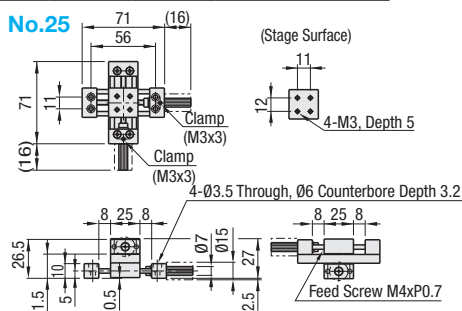
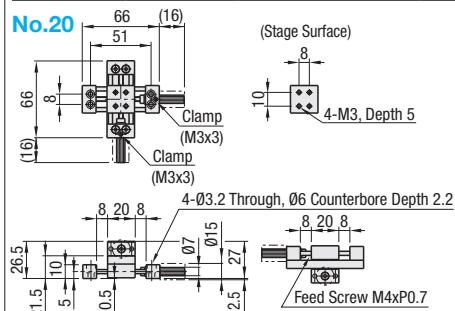
Type	Main Body	Shaft	Knob	Feed Screw	Accessory		
Standard Handle	Large Handle	Material	Surface Treatment	Material	Material	Material	
XYKNEJ	XYKJL	Aluminum Alloy	Black Anodize	SUS304	SUS303	SUS304	No. 20: CBSST3-12, 4 pcs. No. 25: SCB3-10, 4 pcs. No. 40, 60: SCB4-10, 4 pcs.

Handle Shape Comparisons



When the large handle is selected, the handle diameter will exceed the end plate height as shown above. Please be aware of potential interferences.

Travel per Rotation: 0.7mm



Do not force the handle to turn past the end of the travel limits as it may cause the handle to come loose.

Type	Part Number		Stage Surface (mm)	Travel Distance (mm)	Load Capacity (N)	Weight (kg)	Unit Price		
	No.	Large Handle					XYKNEJ	XYKJL	XYKJL/A XYKJL/B
(Standard Handle) XYKNEJ (Large Handle Selection) XYKJL	20	(Large Handle Top & Bottom)	20x20	±7	18.6	0.10			
	25	(Large Handle Top only)	25x25						
	40	(Large Handle Bottom only)	40x40	±9	36.2	0.27			
	60	(Large Handle Bottom only)	60x60	±13	36.2	0.48			

Travel per Rotation: 0.7mm

Ordering Part Number
Example **XYKNEJ40**
XYKJL60L

Alterations Part Number - (MMR) - (CLC)
XYKNEJ20 - MMR
XYKJL40A - CLC
XYKNEJ60 - MMR - CLC

Alteration	Mounting of a Scaled Plate on the Stage	Change of Clamp (Knurled Knob)																														
Spec.	<p>Mounts a scaled plate on the stage. Minimum Graduation: 0.5mm Included screws are changed as shown on the below right.</p> <p>4-d1 Through d2 Counterbore, Depth l</p> <table border="1"> <thead> <tr> <th>No.</th> <th>P1</th> <th>P2</th> <th>d1</th> <th>d2</th> <th>l</th> </tr> </thead> <tbody> <tr> <td>20</td> <td>26</td> <td>8</td> <td>2.5</td> <td>4.3</td> <td>4</td> </tr> <tr> <td>25</td> <td>31</td> <td>11</td> <td>3.5</td> <td>6.0</td> <td>3.5</td> </tr> <tr> <td>40</td> <td>50</td> <td>18</td> <td>4.5</td> <td>7.5</td> <td>3</td> </tr> <tr> <td>60</td> <td>75</td> <td>30</td> <td>4.5</td> <td>7.5</td> <td>3</td> </tr> </tbody> </table> <p>MMR alteration will change the mounting hole pitch since a plate is attached to the stage.</p>	No.	P1	P2	d1	d2	l	20	26	8	2.5	4.3	4	25	31	11	3.5	6.0	3.5	40	50	18	4.5	7.5	3	60	75	30	4.5	7.5	3	<p>Changes Clamp Screw to Knurled Knob. Changes are for both X and Y axes.</p> <p>Accessory (4 pcs.) No. 20: SCB2-5 No. 25: SCB3-6 No. 40: CBSST4-8 No. 60: CBSST4-8</p>
No.	P1	P2	d1	d2	l																											
20	26	8	2.5	4.3	4																											
25	31	11	3.5	6.0	3.5																											
40	50	18	4.5	7.5	3																											
60	75	30	4.5	7.5	3																											
Code	MMR	CLC																														