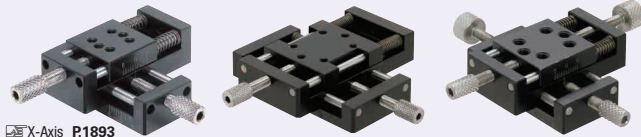


[Simplified Adjustments] XY-Axis, Push Screw

■ **Features:** Economical unit suitable for applications not requiring high accuracies. The springs used keep backlash low.

XY-Axis



☒ X-Axis **P1893**
☒ Z-Axis **P1951**

CL Alteration

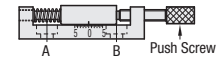
RoHS10

⚠ Travel per Rotation: 0.5mm

How to Mount

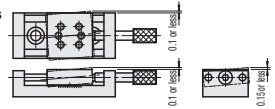
- 1 Remove the Push Screw.
- 2 Screw down the A side.
- 3 Move the table manually to the A side.

- 4 Screw down the B side.
- 5 Re-install the Push Screw.



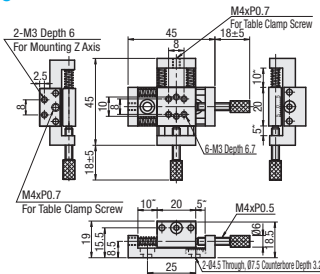
Accuracy Standards

⚠ Not recommended for precise positioning due to its clearance shown on the right. Values are for single-axis configuration.

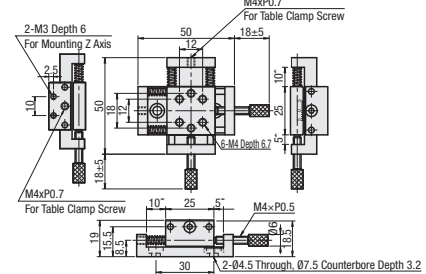


Type	Main Body		Shaft	Spring	Push Screw		Accessory
	Material	Surface Treatment	Material	Material	Material	Surface Treatment	
XYKNG	Aluminum Alloy	Black Anodize	SUS303	SUS304	S45C	Electroless Nickel Plating	No. 20, 25: CBS4-6, 2 pcs. No. 40, 60: CBS5-8, 4 pcs.

XYKNG20

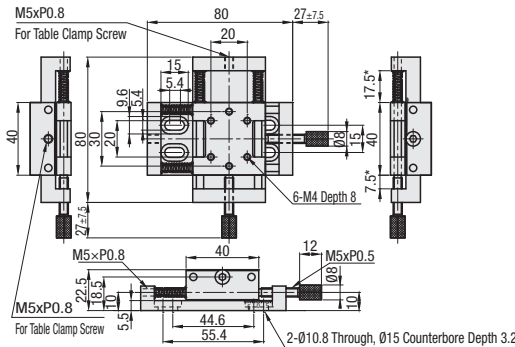


XYKNG25

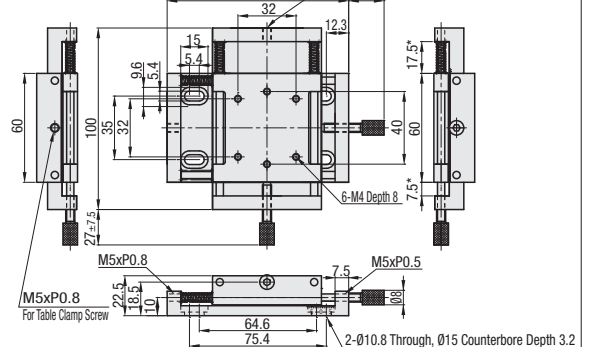


* Dimensions are for "Scale aligned at 0 mark".

XYKNG40



XYKNG60



Part Number	Type	No.	Stage Surface (mm)	Travel Distance (mm)	Load Capacity (N)	Weight (kg)	Unit Price
		25	25x25		0.06		
		40	40x40		0.20		
		60	60x60	±7.5	14.7	0.36	

⚠ Travel per Rotation: 0.5mm ⚠ Minimum Graduation: 0.5mm



Ordering Example

Part Number
XYKNG20



Alterations



Part Number - (CL)
XYKNG20 - CL

Alteration	Opposite Clamp Bolt
Spec.	Opposing clamp screws for table immobilizing (No. 20, 25: M4, Pitch 0.7, L=30mm; No. 40, 60: M5, Pitch 0.8, L=44mm) are included. Mounted as shown in the photo.
Code	CL

