

Contact Probes, Receptacles

Minimum Mounting Pitch 2.0mm / 2.54mm Series

Features: Receptacle's stopper portion is machined slightly smaller in I.D. to avoid probes from being pressed in too far.

Contact Probes - Minimum Mounting Pitch 2.0mm

Receptacles - Minimum Mounting Pitch 2.0mm

NP120
NP120HD

NR120

NR120T
(Terminal Type)
Applicable Terminal P1879

Contact Probes

| No. | Part | Material | Surface Treatment |
|-----|---------|----------|-------------------------------------|
| ① | Plunger | SK4 | Rhodium Plating on Nickel Undercoat |
| ② | Barrel | Brass | Gold Plating on Nickel Undercoat |
| ③ | Spring | SWP | Gold Plating |

⚠ The receptacle has a stopper that prevents the probe from being pulled out.

Receptacles

| No. | Material | Surface Treatment |
|-----|----------|----------------------------------|
| ④ ⑤ | Brass | Gold Plating on Nickel Undercoat |

• NP120 and NP120HD Tip Shapes

A (Quartered)

B

C

D

E

G

H (Quartered)

J

N

Contact Probes - Minimum Mounting Pitch 2.54mm

Contact Probes - Minimum Mounting Pitch 2.54mm

Receptacles - Minimum Mounting Pitch 2.54mm

TP604
NP604
NP604HD

NR604

Contact Probes

| No. | Part | Material | Surface Treatment |
|-----|---------|-------------------|-------------------------------------|
| ① | Plunger | C1730B | Rhodium Plating on Nickel Undercoat |
| ② | Barrel | German Silver | Gold Plating on Nickel Undercoat |
| ③ | Spring | * Stainless Steel | - |

* For NP604HD, the material of spring is SWP.
* For TP604, the ball material is brass.

⚠ The receptacle has a stopper that prevents the probe from being pulled out.

Receptacles

| Material | Surface Treatment |
|----------|----------------------------------|
| Brass | Gold Plating on Nickel Undercoat |

• TP604 Tip Shapes

D19

E19

• NR604 End Shapes

A Wire Wrap Type

B Solder, Crimp, Terminal Type

C Solder Type

Applicable Terminal P1879

• NP604 and NP604HD Tip Shapes

A

B

C

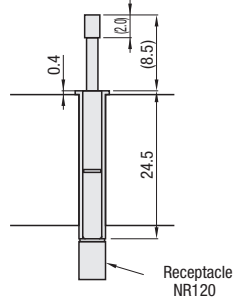
D19

E

ER



Example ■ Example of Inserting Contact Probe to Receptacle



Example

