

Toggle Clamps

Side Push-Pull Free Mounting Direction / Horizontal (Flange Base)

1N=0.101972kgf

Side Push-Pull Free Mounting Direction



Part Number	MC02-1	MC02-S1
Body Material	SS400	SUS304 Shaft Material: SUS416 Pin: SUS410
Surface Treatment	Trivalent Chromate	-
Stroke (mm)	20.34	
Tightening Force (N)	900	
Handle Open-Close Angle	189°	
Weight (g)	120	
Accessory	Steel Bolt	Stainless Steel Bolt
Unit Price		

* Shaft: Nickel Plating

Side Push-Pull Free Mounting Direction



Part Number	MC02-2	MC02-S2
Body Material	SS400	SUS304 Shaft Material: SUS416 Pin: SUS410
Surface Treatment	Trivalent Chromate	-
Stroke (mm)	40	
Tightening Force (N)	1470	
Handle Open-Close Angle	189°	
Weight (g)	280	
Accessory	Steel Bolt	Stainless Steel Bolt
Unit Price		

* Shaft: Nickel Plating

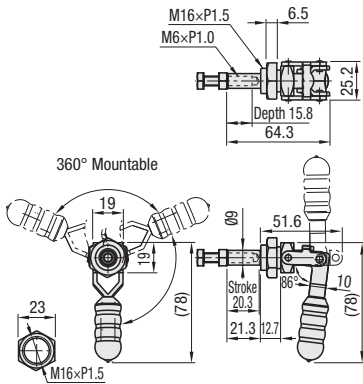
Side Push-Pull Free Mounting Direction



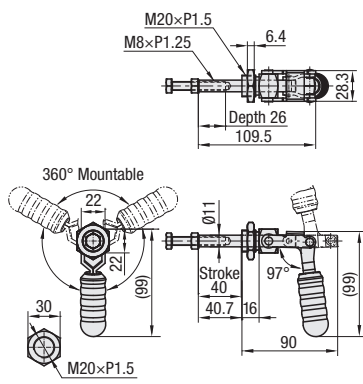
Part Number	MC02-3
Body Material	SS400
Surface Treatment	* Trivalent Chromate
Stroke (mm)	66.7
Tightening Force (N)	3138
Handle Open-Close Angle	189°
Weight (g)	750
Accessory	Steel Bolt
Unit Price	

* Shaft: Nickel Plating

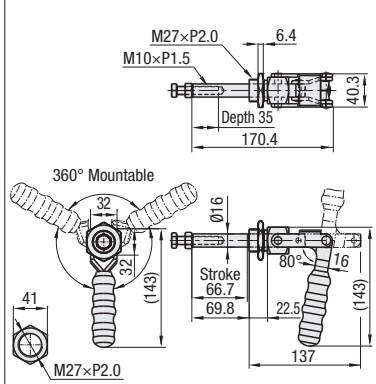
MC02-1 MC02-S1 (Stainless Steel)



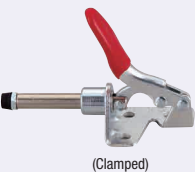
MC02-2 MC02-S2 (Stainless Steel)



MC02-3



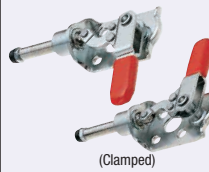
Horizontal (Flange Base)



Part Number	MC03-1	MC03-S1
Body Material	SS400	SUS304
Surface Treatment	* Trivalent Chromate	-
Stroke (mm)	17	
Tightening Force (N)	450	
Handle Open-Close Angle	185°	
Weight (g)	50	
Accessory	Bolt with Rubber Material: NBR Hardness: Shore A70	* Stainless Steel Bolt
Unit Price		

* Shaft: Nickel Plating

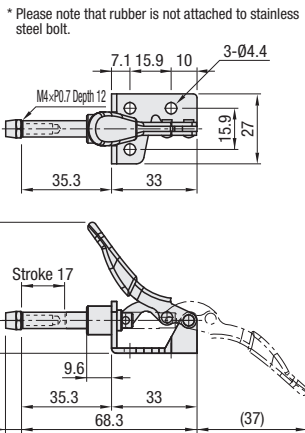
Horizontal (Flange Base)



Part Number	MC03-2	MC03-3
Body Material	SS400	
Surface Treatment	* Trivalent Chromate	
Stroke (mm)	16	
Tightening Force (N)	500	
Handle Open-Close Angle	181°	
Weight (g)	65	
Accessory	Bolt with Rubber Material: NBR Hardness: Shore A70	
Unit Price		

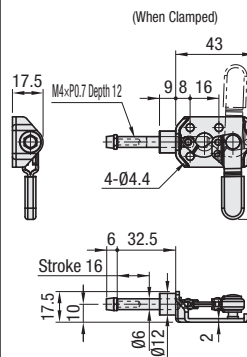
* Shaft: Nickel Plating

MC03-1 MC03-S1 (Stainless Steel)

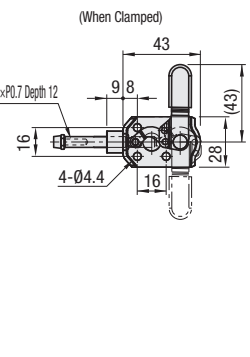


* Please note that rubber is not attached to stainless steel bolt.

MC03-2 (Right Turn)



MC03-3 (Left Turn)

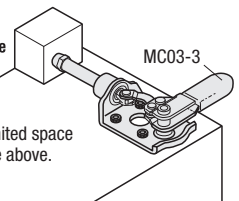


Ordering Example

Part Number
MC02-1



Example



Suitable for a limited space with an obstacle above.