

# Toggle Clamps

## Hold Down, Horizontal Standard Handle (Flange Base)

1N=0.101972kgf

■ **Features:** MC01-2B is the size between MC01-2 and MC01-3.

Part Number	MC01-1	MC01-S1
	<b>Body Material</b>	SS400
<b>Surface Treatment</b>	Trivalent Chromate	-
<b>Tightening Force (N)</b>	264.6	
<b>Weight (g)</b>	30	
<b>Arm Open-Close Angle</b>	90°	
<b>Handle Open-Close Angle</b>	73°	
<b>Accessory</b>	* Nylon Bolt	Stainless Steel Bolt
<b>Unit Price</b>		

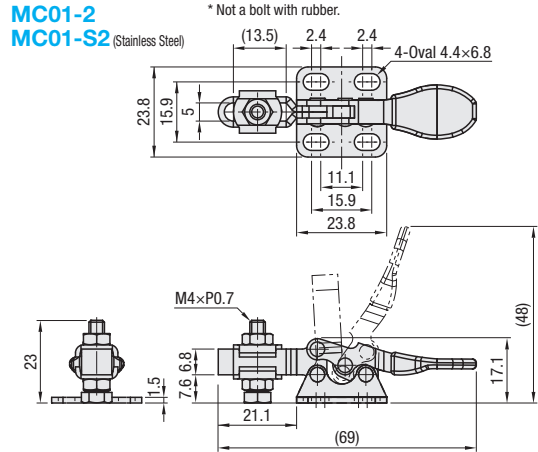
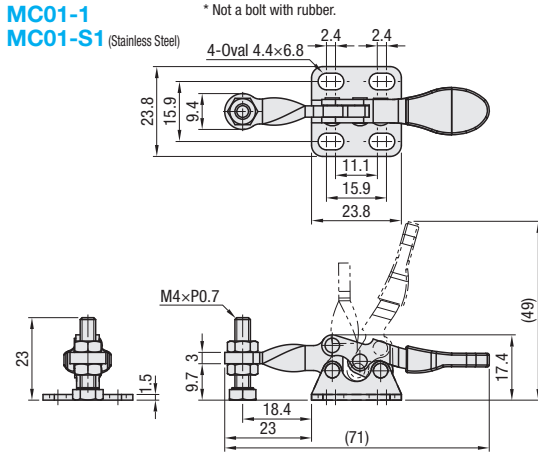


(Clamped)

Part Number	MC01-2	MC01-S2
	<b>Body Material</b>	SS400
<b>Surface Treatment</b>	Trivalent Chromate	-
<b>Tightening Force (N)</b>	264.6	
<b>Weight (g)</b>	35	
<b>Arm Open-Close Angle</b>	90°	
<b>Handle Open-Close Angle</b>	73°	
<b>Accessory</b>	* Nylon Bolt	Stainless Steel Bolt
<b>Unit Price</b>		



(Clamped)



Part Number	MC01-2B
	<b>Body Material</b>
<b>Surface Treatment</b>	Trivalent Chromate
<b>Tightening Force (N)</b>	400
<b>Weight (g)</b>	60
<b>Arm Open-Close Angle</b>	90°
<b>Handle Open-Close Angle</b>	75°
<b>Accessory</b>	Bolt with Rubber Material: NBR Hardness: Shore A70
<b>Unit Price</b>	

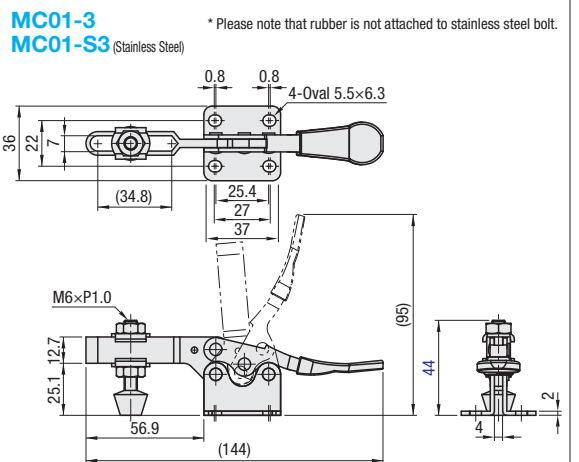
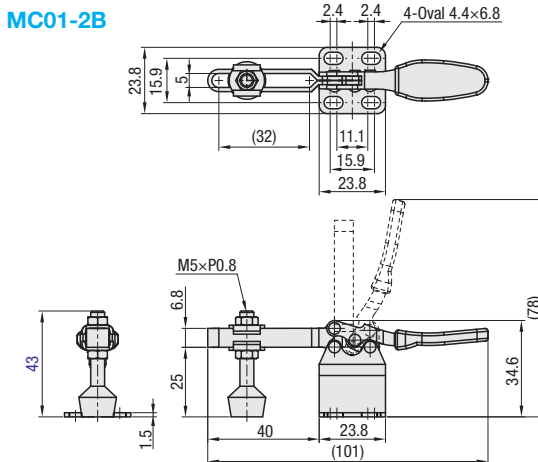


(Clamped)

Part Number	MC01-3	MC01-S3
	<b>Body Material</b>	SS400
<b>Surface Treatment</b>	Trivalent Chromate	-
<b>Tightening Force (N)</b>	882	
<b>Weight (g)</b>	130	
<b>Arm Open-Close Angle</b>	80°	
<b>Handle Open-Close Angle</b>	73°	
<b>Accessory</b>	Bolt with Rubber Material: NBR Hardness: Shore A70	* Stainless Steel Bolt
<b>Unit Price</b>		



(Clamped)



Ordering Example

Part Number  
**MC01-1**



Combination of these app. examples can be selected on our website. Selection Procedure Details **P87** e-Catalog Search Keyword

\* Enter the search keyword in the search box on e-Catalog. The search result will be shown in "Modular Assembler" area.

#MA91

#MA551

