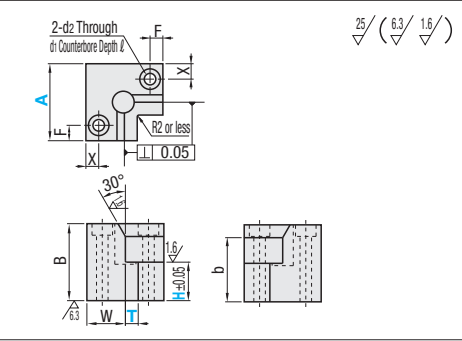


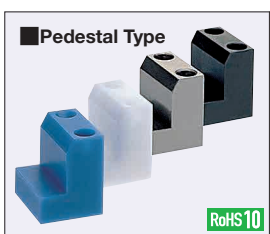
Part Number	Material
WGDLJ	Polyacetal
WGDLN	MC Nylon
WGDLNE	Conductive MC Nylon Rz

**ex** Example

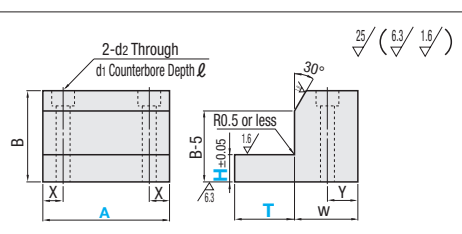


Part Number	A Selection	H 1mm Increment	T 1mm Increment	B	W	F	X	d1	d2	l	b	Unit Price		
												WGDLJ	WGDLN	WGDLNE
WGDLJ WGDLN WGDLNE	15	3~5	2~5	10	10	4	4	4.8	2.4	2.4	7			
	20	3~12	3~10	20	10	5	3.5	6.5	3.5	3.5	15			
	30	3~22		30	15	5	6	8	4.5	4.5	25			
	40	3~32	3~15	40	20	7	9	9.5	5.5	5.5	35			
	50	3~42		50	20	7	9	9.5	5.5	5.5	45			

Part Number - A - H - T  
 WGDLJ - 20 - 10 - 3

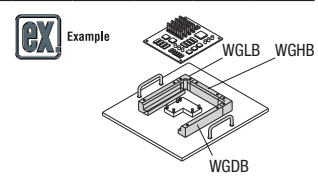


Part Number	Material	Hardness	Surface Treatment
WGDB	S45C Equivalent	-	Black Oxide
WGDM		-	Electroless Nickel Plating
WGDHB		40HRC~	Black Oxide
WGDHM		40HRC~	Electroless Nickel Plating
WGDS	SUS304	-	-
WGDJ	Polyacetal	-	-
WGDN	MC Nylon	-	-
WGDFNE	Conductive MC Nylon Rz	-	-

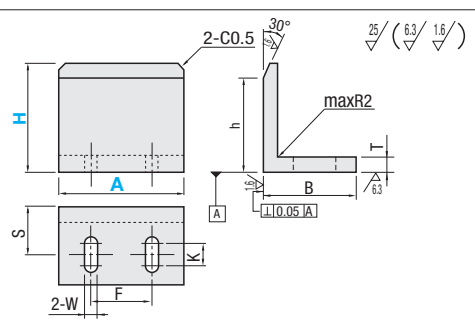


Part Number	A Selection	H 1mm Increment	T 1mm Increment	B	W	X	Y	d1	d2	l	Unit Price								
											WGDB	WGDM	WGDHB	WGDHM	WGDS	WGDJ	WGDN	WGDFNE	
WGDB WGDM WGDHB WGDHM WGDS WGDJ WGDN WGDFNE	20	3~12	2~15	20	15	5	6	8	4.5	4.5									
	30			30															
	40			40															
	50	50		5~20	20	7	9	9.5	5.5	5.5									
	60	60		10~25	60	25	8	11	11	6.5	6.5								

Ordering Example Part Number - A - H - T  
 WGDM - 30 - 10 - 10



Part Number	Material	Hardness	Surface Treatment
WGNB	S45C Equivalent	-	Black Oxide
WGNM		-	Electroless Nickel Plating
WGNHB		40HRC~	Black Oxide
WGNHM		40HRC~	Electroless Nickel Plating
WGNA	Aluminum Alloy	-	-
WGNS	SUS304	-	-
WGNJ	Polyacetal	-	-
WGNL	MC Nylon	-	-
WGNNE	Conductive MC Nylon Rz	-	-



Part Number Type	A Selection	H 10mm Increment	T	h	B	F	S	W	K	Unit Price									
										WGNB	WGNM	WGNHB	WGNHM	WGNA	WGNS	WGNJ	WGNL	WGNNE	
WGNB WGNM WGNHB WGNHM WGNA	20	20~60	8	H-5	30	11	19	3.5	8										
	30		40		16	25	4.5	10											
	40		40		26	25	4.5	10											
	50		50		32	31	5.5	15											
	60		50		42	31	5.5	15											

Ordering Example Part Number - A - H  
 WGNJ - 20 - 40