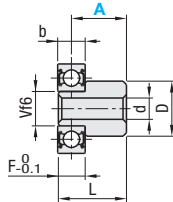


# Idler Pins

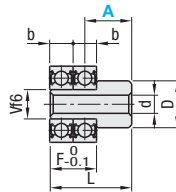
■ **Features:** Tools needed to attach idler sprockets are sold as a set.



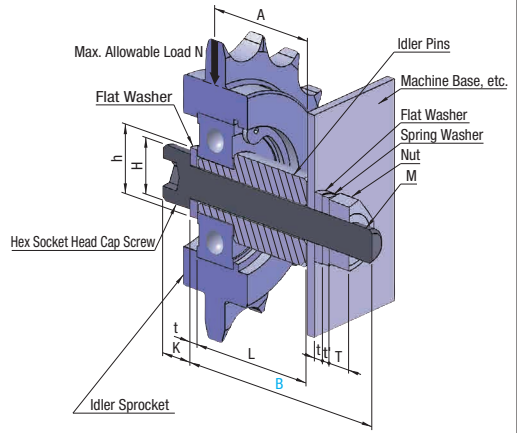
**IDP** (Steel)  
**IDPS** (Stainless Steel)



**Type S**



**Type W**



Part Name	Type	
	IDP	IDPS
Idler Pins	<b>M</b> Material S45C Equivalent	<b>M</b> Material
Hex Socket Head Cap Screw	SCM435	Black Oxide Stainless Steel
Nut, Plain Washer	SS400	
Spring Washer	SWRH57	

Part Number		A Selection	B Selection 5mm Increment	Applicable Bearing	Pin Body Size			Size of Screw, Washer					Max. Allowable Load N (kgf)	Unit Price					
Type	Bearing No.				Type	L	F	V/6	D	d	M	K		H	T	t	t'	h	IDP
<b>IDP</b> (Steel) <b>IDPS</b> (Stainless Steel)	6000	S	12	30~40	6000ZZ (b=8)	A+3.8	7.8	10	16	6.2	M6	6	10	5.0	1.6	1.5	12.5	323 (33)	
			14, 16	35~45														274 (28)	
			18, 20	40~50															
		W	12, 14	40~50		A+11.8	15.8												
			16, 18	45~55															
			20	50~60															
	6001	S	14	35~45	6001ZZ (b=8)	A+3.8	7.8	12	16	8.2	M8	8	13	6.5	1.6	2.0	17.0	548 (56)	
			16, 18, 20	40~50														441 (45)	
			22	45~55															
		W	14, 16	45~55		A+11.8	15.8												
			18, 20, 22	50~60															
	6201	S	14	35~45	6201ZZ (b=10)	A+4.8	9.8	12	16	8.2	M8	8	13	6.5	1.6	2.0	17.0	548 (56)	
			16, 18	40~50														441 (45)	
			20, 22	45~55															
		W	14	45~55		A+14.8	19.8												
			16, 18	50~60															
			20, 22	55~65															
	6202	S	16, 18, 20	45~55	6202ZZ (b=11)	A+5.3	10.8	15	20	10.5	M10	10	16	8.0	2.0	2.5	21.0	999 (102)	
			22, 24	50~60														803 (82)	
			16, 18	55~65															
		W	20, 22	60~70		A+16.3	21.8												
			24	65~75															
6203	S	16, 18	45~55	6203ZZ (b=12)	A+5.8	11.8	17	25	10.5	M10	10	16	8.0	2.0	2.5	21.0	1244 (127)		
		20, 22, 24	50~60														990 (101)		
		16	55~65																
	W	18, 20, 22	60~70		A+17.8	23.8													
		24	65~75																
6204	S	20, 22	55~65	6204ZZ (b=14)	A+6.8	13.8	20	25	14.5	M14	14	21	11.0	2.5	3.5	28.0	1989 (203)		
		24, 26	60~70														1617 (165)		
		28, 30	65~75																
	W	20, 22	70~80		A+20.8	27.8													
		24, 26, 28	75~85																
		30	80~90																



Ordering  
Example

Part Number - **A** - **B**  
**IDP6000S** - **16** - **35**