

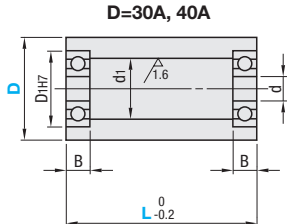
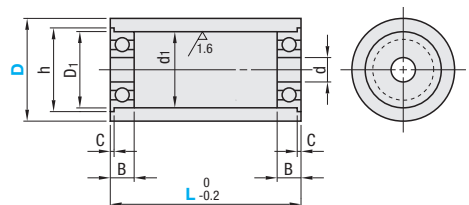
Idlers for Flat Belts

Width L=38 ~ 90, Width L=100 ~ 300



Type	Material	Surface Treatment	Material
ROFB	S45C	Black Oxide	Steel
ROFM	Equivalent	Electroless Nickel Plating	
ROFA	Aluminum Alloy	Clear Anodize	Stainless Steel
ROFS	SUS304	-	

6.3/(1.6/)



The bearings are removable.

* Bearing Accuracy: JIS B1514 Class 0

Part Number Type	D	L Selection							d	d1	Bearing Dimension				
		38	45	50	60	70	85	90			No.	D1	B	C	h
ROFB ROFM ROFA ROFS	20	38	45	50					6	15	FL696ZZx2	15	5		17
	25	38	45	50	60			17		FL606ZZx2	17	6	1.2	19	
	30	38	45	50	60	70		8	B698ZZx2	19					
	30A	38	45	50	60	70			FL608ZZx2	22	7	1.5	25		
	35	38	45	50	60	70	85	90	22	B6000ZZx2	26	8			
	40	38	45	50	60	70	85	90							
	40A	38	45	50	60	70	85	90	10						

For detailed bearing dimensions, see P989, 991.

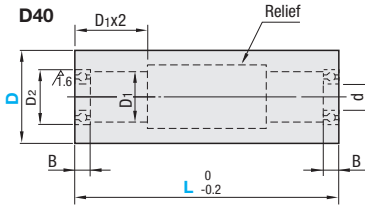
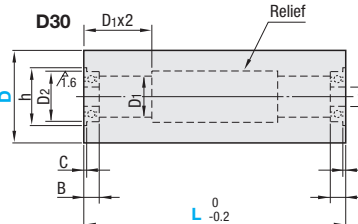
Ordering Example: Part Number - L
ROFM25 - 50

D	Unit Price								
	ROFB		ROFM			ROFA		ROFS	
	L38-50	L60, 70	L85, 90	L38-50	L60, 70	L85, 90	L38-50	L60, 70	L85, 90
20	-	-	-	-	-	-	-	-	-
25	-	-	-	-	-	-	-	-	-
30	-	-	-	-	-	-	-	-	-
30A	-	-	-	-	-	-	-	-	-
35	-	-	-	-	-	-	-	-	-
40	-	-	-	-	-	-	-	-	-
40A	-	-	-	-	-	-	-	-	-



ROFBW (S45C Equivalent+ Black Oxide)
ROFAWB (Aluminum Alloy + Clear Anodize)

6.3/(1.6/)



Bearings are press-fit. Cannot be disassembled.

* Bearing Accuracy: JIS B1514 Class 0

Part Number Type	D	L 10mm Increment	d	D1	Bearing Dimension				Unit Price				
					No.	D2	B	C	h	ROFBW		ROFAWB	
										L100-150	L160-200	L210-250	L260-300
ROFBW	30	100~300	8	10	FL678ZZ	12	3.5	0.8	13.6				
ROFAWB	40		12	18	B6801ZZ	21	5	-	-				

Ordering Example: Part Number - L
ROFBW40 - 150