

# Pulleys for Flat Belts

Width L=25 ~ 100

Crowned, Crosspiece Groove Straight

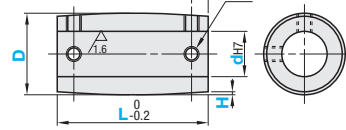
6.3 / (1.6 / )



RoHS10

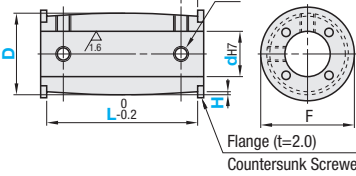
## Crowned ROBAC

(No Flange)



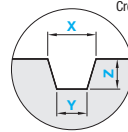
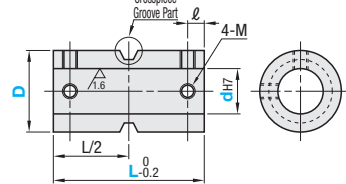
## ROBACF

(Flanged)



## Crosspiece Groove Straight ROBAM

(No Flange)



Crosspiece Groove Part

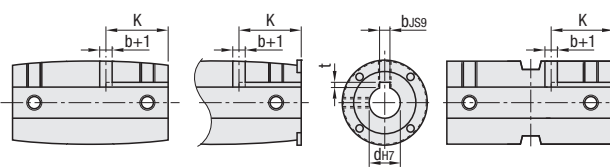
⚠ X ≥ Y  
⚠ For Crosspiece Groove Part Dimensions, see "Pulley, Idler Relief Dimensions".  
⚠ P.1363

■ Material: Aluminum Alloy  
■ Surface Treatment: Clear Anodize

### New JIS (B1301) Keyway Dimensions

Normal	dh7	bJS9	t	Tolerance
N8	8	±0.015	3	±0.0125
N10	10	0	4	1.8
NK10	10	0	5	2.3
N12	12	±0.018	5	2.3
N15	15	0	6	2.8
N20	20	±0.021	8	3.3
N25	25	0	8	±0.180
N30	30	0	8	±0.2

### Shape of Keyway



⚠ For Crosspiece Groove Straight, key length is shorter under the following conditions in order to avoid causing interference with through holes made by keyway machining.

When  $L/2 - X/2 \leq K \leq L/2 + X/2$ ,  
 $K = L/2 - (X/2 + (b+1)/2 + 1)$

Part Number	dh7		1mm Increment	Crowned only	Crosspiece Groove Straight only: 0.1mm Increment			Key Length	M		ℓ	F							
	Type	D			Round Hole + Tap	Keyway + Tap	X		Y	Z			Round Hole + Tap	Keyway + Tap					
Crowned <b>ROBAC</b> <b>ROBACF</b>	15	8	N8	Crowned 25-100	0.3	7.0-15.0	5.0-12.0	4.0-7.0	25	M3	3.5	-							
		8	N8						25			-							
		10	N10, NK10						25			-							
	25	8	N8						Crosspiece Groove Straight 50-100			0.5	7.0-15.0	5.0-12.0	4.0-7.0	25	M4	3.5	26
		10	N10, NK10													25			-
	30	8	N8						Crosspiece Groove Straight 50-100			0.8	7.0-15.0	5.0-12.0	4.0-7.0	25	M4	3.5	31
		10	N10, NK10													30			-
		12	N12													30			-
	35	10	N10, NK10						Crosspiece Groove Straight 50-100			0.5	7.0-15.0	5.0-12.0	4.0-7.0	25	M4	3.5	36
		12	N12													30			-
		15	N15													30			-
	40	12	N12						Crosspiece Groove Straight 50-100			0.8	7.0-15.0	5.0-12.0	4.0-7.0	30	M4	3.5	41
15		N15	30	-															
20		N20	30	-															
50	15	N15	Crosspiece Groove Straight 50-100	0.8	7.0-15.0	5.0-12.0	4.0-7.0	30	M5	4	51								
	20	N20						30			-								
	25	N25						30			-								
60	20	N20	Crosspiece Groove Straight 50-100	0.8	7.0-15.0	5.0-12.0	4.0-7.0	30	M6	4.5	61								
	25	N25						30			-								
	30	N30						30			-								
80	25	N25	Crosspiece Groove Straight 50-100	0.8	7.0-15.0	5.0-12.0	4.0-7.0	30	M8	6	81								
	30	N30						30			-								
		35																	

⚠ K=L (No Flange) or K=L+4 (Flanged) when L ≤ 36(N8, N10, NK10) or L ≤ 43(N12, N15, N20) or L ≤ 45(N25, N30).  
⚠ Flanged Type is only applicable to D=25 or more; Flanged Type with Keyways to D30 or more.  
⚠ Specify NK10 when Keyway + Tap with shaft bore with keyway width 4.0mm (height 1.8mm) is desired.



Ordering Example

■ Crowned  
Part Number - d - L - H  
ROBAC30 - NK10 - L62 - H0.3

■ Crosspiece Groove Straight

Part Number - d - L - X - Y - Z  
ROBAM40 - 15 - L82 - X7.8 - Y6.0 - Z5.0

D	Body Price						Keyway Machining Charge (Body Price +)		
	Crowned			Crosspiece Groove Straight					
	ROBAC		ROBACF	ROBAM					
	L25-50	L51-75	L76-100	L25-50	L51-75	L76-100	L50-75	L76-100	
15									
20									
25									
30									
35									
40									
50									
60									
80									