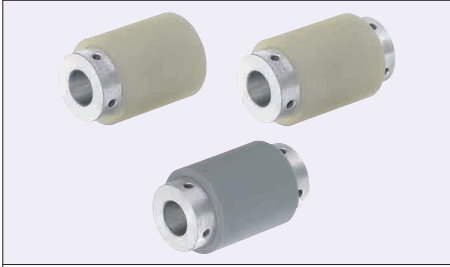


# Rollers

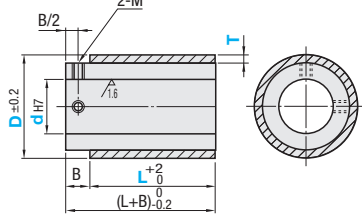
## Straight with Set Screw Holes



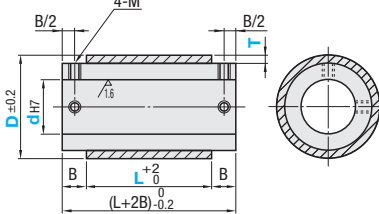
L Selectable Set Screw Holes at Both Ends	Urethane Thickness Selectable, L Configurable			Material		Hardness
	Set Screw Hole at One End	Set Screw Holes at Both Ends	Core	Lining		
RONUS	ROEKUS	ROENUS	SUS304	Urethane (Natural Color)	Shore A90	
RONUA	ROEKUA	ROENUA	Aluminum Alloy			
RONGS	ROEKGS	-	SUS304			
RONGA	ROEKGA	ROENGA	Aluminum Alloy			
RONHA	ROEKHA	ROENHA	-	Silicon Rubber	Shore A70	
RONSS	-	-	SUS304			
RONSA	-	-	A5052			
RONTS	-	-	SUS304	Heat Resistant Urethane (Red Brown) Operating Temperature: -110°C	Shore A90	

☞ Urethane and Silicon Rubber are baked on the outer circumference of the core material.

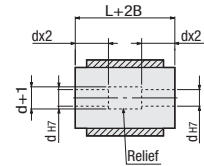
Set Screw Holes at One End



Set Screw Holes at Both Ends



6.3 (1.6/)



☞ When  $L+2B \leq dx3$ , hole d is machined from the same direction.

☞ When  $L+2B > dx3$ , hole d is machined from both ends as shown above. There may be no relief in some cases.

### L Selectable (Set Screw Holes at Both Ends Type Only)

Part Number		D	dH7 Selection	L Selection						T	B	M
Type												
RONUS RONUA RONGS RONGA	RONHA RONSS RONSA RONTS	20	8	15	20	25	30	40	50	3	8	M3
		25	8 10 12	15	20	25	30	40	50			
		30	8 10 12 15	15	20	25	30	40	50			
		35	10 12 15	20	25	30	40	50			10	M4
		40	10 12 15	20	25	30	40	50				
		50	12 15	25	30	40	50	100				



Part Number	d	L	T
RONSS20	8	30	
ROEKUA50	15	80	T10

### Urethane Thickness Selectable (Set Screw Holes at One End / Both Ends)

Part Number		D	dH7 Selection	L		T Selection	B	M
Type				10mm Increment				
Set Screw Hole at One End ROEKUS ROEKUA ROEKGS ROEKGA ROEKHA	ROENUS ROENUA ROENGA ROENHA	40	10 12 15	30~50	5	10	M5	
		50	10 12 15					
		60	12 15 20					
		80	15 20 25	30~100	5	12	M6	
		100	20 25 30		10			

### L Selectable (Set Screw Holes at Both Ends Type Only)

D	L	Unit Price							
		Set Screw Holes at Both Ends							
		RONUS	RONUA	RONGS	RONGA RONHA	RONSS	RONSA	RONTS	
20	15, 20, 25								
	30, 40, 50								
25	15, 20, 25								
	30, 40, 50								
30	15, 20, 25								
	30, 40, 50								
35	20, 25								
	30, 40, 50								
40	20, 25								
	30, 40, 50								
50	25								
	30, 40, 50								
	100								

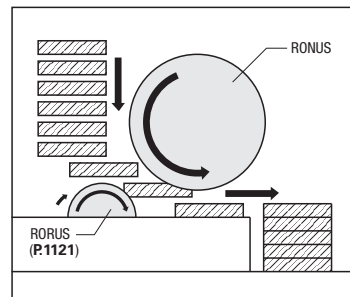
### Urethane Thickness Selectable (Set Screw Holes at One End / Both Ends)

D	L	Unit Price							
		Set Screw Hole at One End				Set Screw Holes at Both Ends			
		ROEKUS	ROEKUA	ROEKGS	ROEKGA ROEKHA	ROENUS	ROENUA	ROENGA	ROENHA
40	30~50								
	60~100								
50	30~50								
	60~100								
60	30~50								
	60~100								
80	30~50								
	60~100								
100	30~50								
	60~100								



Part Number	d	L	T	(UDC)
RONUS20	8	30		UDC
ROEKUS50	15	80	T10	UDC

Alteration	Code	Spec.
Change to Antistatic Urethane (Urethane Color: Gray)	UDC	Change Urethane Shore A90 to Antistatic Urethane Change to Urethane (Ordering Code) UDC Specific Volume Resistivity 2.1x10 <sup>10</sup> Ω·cm Surface Resistivity 4.0x10 <sup>10</sup> Ω (Temperature 30°C / Humidity 60%)



As a Feeding Roller for a Card Collator

☞ Urethane may discolor over time, but there is no effect on physical properties.