

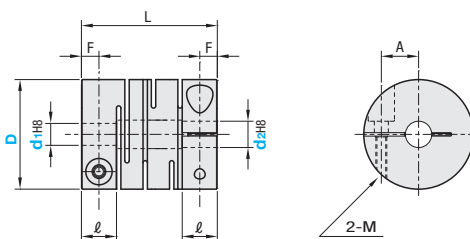
Slit Couplings

Extra Super Duralumin - Clamping Long For Servo Motors

■ **Features:** Long slit coupling for Servo Motors.

■ **For Servo Motors**

CPLCX (Clamping)



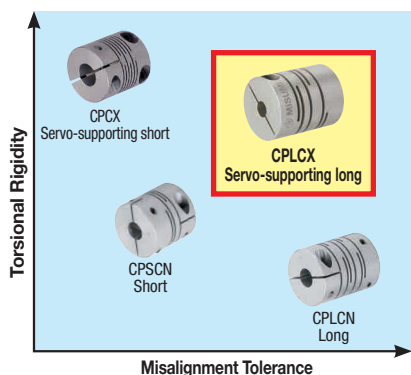
- ⊕ The lateral, angular, and axial misalignment values shown are for each occurring individually. When multiple misalignments are occurring simultaneously, the allowable maximum value of each will be reduced to 1/2.
- ⊕ Tolerances for d_1 and d_2 are values before slit machining.
- ⊕ For the selection criteria and alignment procedures, see **REF P1061**.

M Material	S Surface Treatment	A Accessory
Extra Super Duralumin	Clear Anodize	Hex Socket Head Cap Screw

Part Number		d ₁	d ₂			L	ℓ	M (Coarse)	A	F	Unit Price		
Type	D												
Clamping CPLCX	16	5	5	6		23	6.5	M2.5	5	3.25			
		6		6									
	20	5	6	6.35	8	26	7.5	M2.5	6.5	3.75			
		6	6	6.35	8								
		6.35		8									
		8		8									
	25	5	6			31	8.5	M3	9	4.2			
		6	6	8	10								
		6.35		8	10								
		8		8	10								
	32	8		8	10	41	12	M4	11	6			
		10			10							12	14
					10							12	14
12					12							14	

Part Number	Allowable Torque (N·m)	Angular Misalignment (°)	Lateral Misalignment (mm)	Static Torsional Spring Constant (N·m/rad)	Max. Rotational Speed (r/min)	Moment of Inertia (kg·m ²)	Allowable Axial Misalignment (mm)	Screw Tightening Torque (N·m)	Mass (g)
CPLCX									
16	0.5	1	0.05	96	39000	3.7x10 ⁻⁷	±0.3	1.0	10.1
20	1		0.10	204	31000	10.0x10 ⁻⁷	±0.3	1.0	17.6
25	2		0.15	456	25000	2.9x10 ⁻⁶	±0.4	1.5	30.8
32	4		0.15	600	19000	10.7x10 ⁻⁶	±0.4	2.5	70.4

◆ **Features of CPLCX**
Provides torsional rigidity while allowing high misalignment



Ordering Example

Part Number - Shaft Bore Dia. d₁ - Shaft Bore Dia. d₂
CPLCX20 - 5 - 6

Suitable for Servo Motors with high responsiveness.
Reduces centering workload as the allowable misalignment is large.