

# Bearing Lock Nuts

## Square / Hexagon

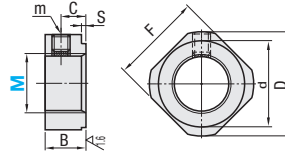


Type		M Material	H Hardness	S Surface Treatment	A Accessory	
Coarse	Fine					
BNG	BNR	SS400	-	Black Oxide	Set Piece (Copper Alloy)	Set Screw (SCM435)
BNGC	BNRC	S45C Thermal Refined	22~28HRC			Set Screw (SUS304)
BNGS	BNRS	SUS304	-		-	Set Screw (SUS304)

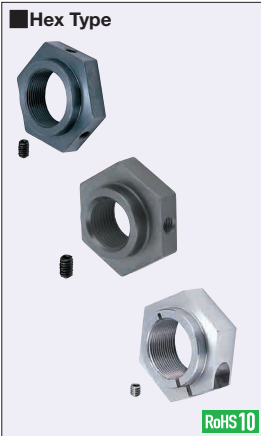
Ⓢ BNGC and BNRC have identification mark "C" on the side of nut.

6.3 / (1.6 / )

- Ⓢ Tighten the set screw after inserting the set piece.
- Ⓢ For Set Piece (SEPNS) Specifications, see P.2-212
- Ⓢ S45C Thermal Refined excels in durability.



Part Number	MxPitch		D	d	F	B	C	S	m	Coarse Thread Unit Price		Fine Thread Unit Price				
	Type	M								Coarse	Fine	BNG	BNGC	BNGS	BNR	BNRC
(Coarse) BNG BNGC BNGS	3	M3x0.5	M3x0.35	11.5	4	10	5.5	3	0.5	M3x3 (With Set Piece)						
	4	M4x0.7	M4x0.5		5											
	5	M5x0.8	M5x0.5	13.5	9	11	8	5	1							
	6	M6x1.0	M6x0.75		10											
	8	M8x1.25	M8x1.0	17	13	14	6.5	4								
	10	M10x1.5	M10x1.0		16											
	12	M12x1.75	M12x1.0	22	17	19	8	5								
	15	-	M15x1.0													
	16	M16x2.0	-	25	21	22	10	6								
	17	-	M17x1.0													
(Fine) BNR BNRC BNRS	20	M20x2.5	M20x1.0	35	26	30	13	8								
	24	M24x3.0	-		33											
	25	-	M25x1.5	43	33	35	15	10								
	30	M30x3.5	M30x1.5		39				40							
	35	-	M35x1.5	48	43	45	20	14								
	40	-	M40x1.5		43				45							
	40	-	M40x1.5	53	48	49	25	16								
	50	-	M50x1.5		48				49							

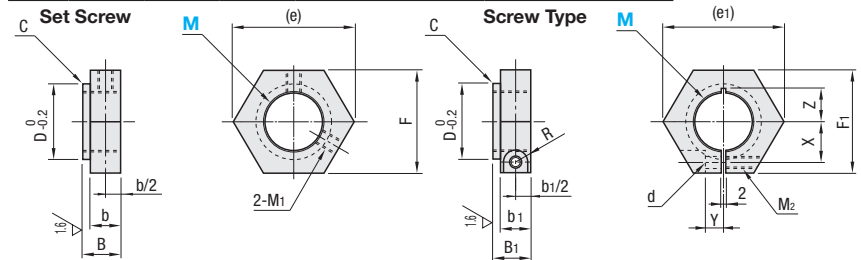


Type	Coarse	Fine	M Material	H Hardness	S Surface Treatment	A Accessory	
Set Screw Type	BNCM	BNSC	SS400	-	Black Oxide	Set Piece (Copper Alloy)	Set Screw (SCM435)
	-	BNSCC	S45C Thermal Refined	20~24HRC			Set Screw (SUS304)
	BNCMS	BNSCS	SUS303	-		Set Screw (SUS304)	
Screw Type	BNBM	BNBS	SS400	-	Black Oxide	Hex Socket Screw (SCM435)	
	-	BNBSC	S45C Thermal Refined	20~24HRC			
	BNBMS	BNBSS	SUS303	-			Hex Socket Screw (SUS304)

Ⓢ BNSCC, BNBM and BNBS have a round identification groove in front.

Ⓢ S45C Thermal Refined excels in durability.

6.3 / (1.6 / )



Part Number	MxPitch		D	C	Set Screw				Screw Type								Unit Price									
	Type	M			Coarse	Fine	(e)	F	B	B	M1	(e1)	F1	B1	b1	M2	X	Y	Z	d	R	BNCM BNSC	BNSCC	BNCMS BNSCS	BNBM BNBS	BNBSC
(Coarse Set Screw) BNCM BNSC	*5	M5x0.8	M5x0.5	9	19.6	17	9	5	M3	-	-	-	-	-	-	-	-	-	-	-	-	-	-	-	-	-
	*6	M6x1.0	M6x0.75							10	27.7	24	13	9	M4	7	4	7 (8.5)	4.5	3.75						
(Coarse Screw) BNBM BNBS	8	M8x1.25	M8x1.0	13	21.9	19	10	6	M4	31.2	27	19	14	11	15	12	15	9.5	5	9.5 (11)	7	5.5	4.5			
	10	M10x1.5	M10x1.0							25.4	22	10	34.6	30	16	12	M5	9.5	4.5	9 (11)	5.5	4.5				
(Fine Set Screw) BNSC BNSCC BNSCS	12	M12x1.75	M12x1.0	17	27.7	24	11	6	M4	37.0	32	26	14	11	15	12	15	9.5	5	9.5 (12)	7	5.5	4.5			
	15	-	M15x1.0							31.2	27	21	14	11	15	12	M5	9.5	4.5	9 (11)	5.5	4.5				
(Fine Screw) BNBS BNBSC BNBSS	16	M16x2.0	-	21	37.0	32	11	6	M4	47.3	41	26	14	11	15	12	15	9.5	5	9.5 (12)	7	5.5	4.5			
	20	M20x2.5	M20x1.0							37.0	32	26	14	11	15	12	M5	9.5	4.5	9 (11)	5.5	4.5				
	24	M24x3.0	-	33	47.3	41	13	8	M5	53.1	46	26	14	11	15	12	15	9.5	5	9.5 (12)	7	5.5	4.5			
	25	-	M25x1.5							47.3	41	13	8	M5	53.1	46	26	14	11	15	12	15	9.5	5	9.5 (12)	7
30	M30x3.5	M30x1.5	39	0.5	57.7	50	16	10	M6	57.7	50	20	14	11	15	12	15	9.5	5	9.5 (12)	7	5.5	4.5			

\* End Face M5 and M6 are available for Set Screw only. Ⓢ Z dimensions in ( ) are for Stainless Steel Type.

