

Bearing Nuts / Toothed Lock Washers for Bearings

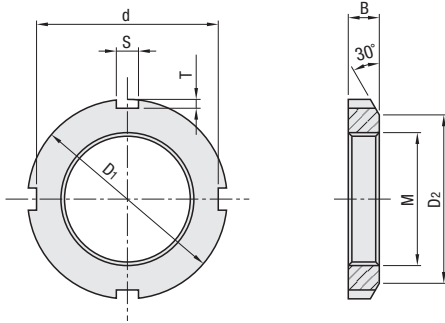
Features: A set of a nut and a special washer, the standard components to secure bearings.



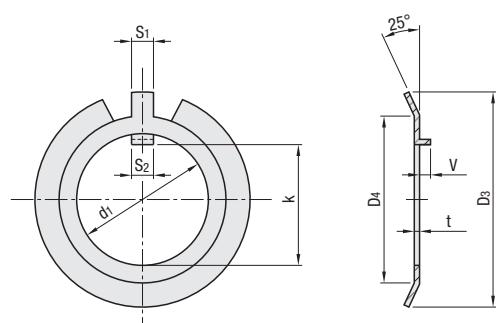
RoHS 10

Type	Type		① Bearing Nut	② Tooth Lock Washer for Bearing
	①+② Set	① Only	Material	Material
Steel	JLNK	JLN	SS400	SPCC
Stainless Steel	JLNSK	JLNS	No.10-20 SUS303 No.25-50 SUS304	SUS304

① Bearing Nut



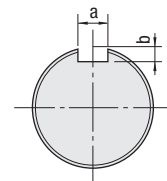
② Tooth Lock Washer for Bearing



Screw Accuracy: JIS B 0211 6H (Class 2)

Part Number	① Bearing Nut								Reference Mass (g)				JLNK	JLNSK	JLN	JLNS		
	Type	No.	MxPitch (Fine)	D1	D2	B	d	S	T	per Set (①+②)		per 1 pc. (① Only)		Unit Price				
										JLNK	JLNSK	JLN	JLNS					
①+② Set (Steel) JLNK	10	10x0.75	18	13	4	14	3	2		5.0	5.3	3.7	4.1					
	12	12x1.0	22	17	4	18	3			8.3	8.2	6.4	6.6					
	15	15x1.0	25	21	5	21	4			12.5	12.7	10	10.3					
	17	17x1.0	28	24	5	24	4			15.5	16.3	12.4	13					
	20	20x1.0	32	26	6	28	4			21.5	22.8	19	19.5					
① Only (Stainless Steel) JLNSK	25	25x1.5	38	32	7	34	5	2.5		31.4	36.6	25	31.2					
	30	30x1.5	45	38	7	41	5			47.8	48.3	40	41.1					
	35	35x1.5	52	44	8	48	5			63.4	73.7	53	64.3					
	40	40x1.5	58	50	9	53	6			97.3	97.7	85	86.5					
	45	45x1.5	65	56	10	60	6			134.2	135	119	121					
50	50x1.5	70	61	11	65	6	162.5	161.5	146.5	147								

No.	② Tooth Lock Washer for Bearing										Dim. of Tooth Lock Washer Mounting Groove (Reference)	
	d1	k	S1	S2	t	V	D3	D4	Number of Teeth	Slot Width a	Slot Depth b	
10	10	8.5	3	3	1.0	2	21	13	9	4	2	
12	12	10.5	3	3			25	17				
15	15	13.5	3	3			28	21				
17	17	15.5	4	4			32	24				
20	20	18.5	4	4			36	26				
25	25	23	5	5	42	32	13	7	2.5	3		
30	30	27.5	5	5	49	38						
35	35	32.5	5	5	57	44						
40	40	37.5	6	6	62	50						
45	45	42.5	6	6	69	56						
50	50	47.5	6	6	74	61	17					



Ordering Example

Part Number

- ①+② Set
JLNK10
- ① Only
JLNS25

■ Bearing Nuts and Toothed Lock Washers
 -These 2 items are common parts for securing bearings.
 -Nut loosening can be prevented by machining a vertical groove (Keyway) on the thread of a rotary shaft, and by tightening the nut and the shaft with the tooth lock washer.

[Mounting Procedure]

- (1) Assemble a bearing onto a rotary shaft.
- (2) Fit the tooth lock washer tab (S₂) in the groove of the rotary shaft (a).
- (3) Tighten the bearing nut.
- (4) Fold the tooth lock washer tab (S₁) to fit the groove of the bearing nut (S).