

# Steel Plate Ball Bearing Units / Shaft End Caps

## Flanged

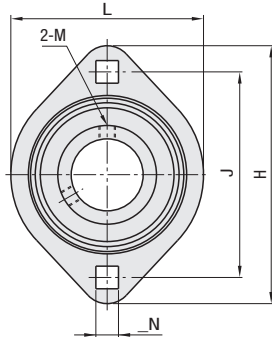
■ **Features:** Inexpensive Ball Bearing Units with pressed sheet metal housing.

### Steel Plate Ball Bearing Units - Flanged

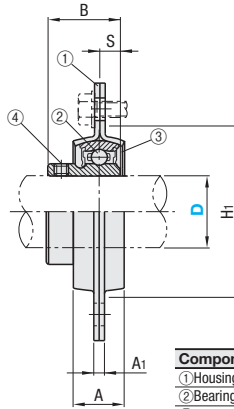


RoHS 10

### HBTP



- ① Bearing and sheet metal are shipped unassembled. Assemble before use.
- ② An angle of 2-M (set screw) is 120°.



Accuracy: JIS B 1558  
 JIS B 1514  
 JIS B 1559  
 Operating Temperature: -15 ~ +100°C

Component	Material	Surface Treatment
① Housing	SPCC	Black Oxide
② Bearing	SUJ2	-
③ Rubber Seal	Nitrile Rubber (NBR)	-
④ Set Screw	SCM435	-

Part Number	Type	D	L	H	A	J	N	A <sub>1</sub>	H <sub>1</sub> Min.	B	S	Mounting Screw Nominal	Allowable Load (N)		Bearing Basic Load Rating (N)		Set Screw			Mass (g)	Unit Price
													Radial	Axial	Cr (Dynamic)	Co (Static)	M	Tightening Torque (N-cm)	Axial Load Capacity (N)		
HBTP	12	59	81	14	63.5	7	4	49	22	6	M6	2650	640	9550	4800	M5x0.8	240	478	250		
	15	59	81	14	63.5	7	4	49	22	6	M6	2650	640	9550	4800		240	478	240		
	20	67	90	16	71.5	9	4	56	24.7	7.5	M8	3100	740	12800	6600	250	1280	290			
	25	71	95	18	76	9	4	60	27	7.5	M8	3530	900	14000	7900	490	1400	360			
	30	84	113	18	90.5	11	5.2	71	30.3	8	M10	4900	1220	19600	11300	490	1960	560			

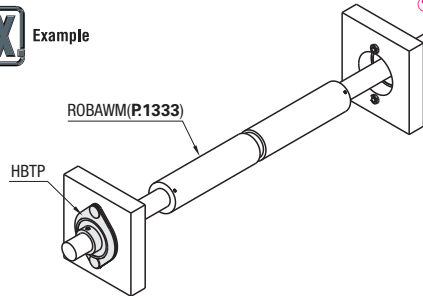


Ordering Example

Part Number  
**HBTP12**



Example



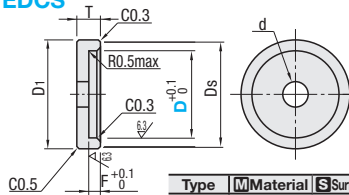
kgf-Mx0.101972

### Shaft End Caps



RoHS 10

### EDCB EDCM EDCS



Type	Material	Surface Treatment
EDCB	S45C	Black Oxide
EDCM	Equivalent	Electroless Nickel Plating
EDCS	SUS304 Equivalent	-

Part Number	Type	D	D <sub>1</sub>	D <sub>s</sub>	T	F	d	Unit Price		
								EDCB	EDCM	EDCS
EDCB EDCM EDCS	10	14	13.4				4.5			
	12	16	15.4	5	2		5.5			
	15	19	18.4							
	17	21	20.4							
	20	26	25.4	7	3		6.6			
	25	31	30.4							
	30	37	36.4	8			9			
	35	42	41.4					11		
	40	47	46.4	10	4					



Ordering Example

Part Number  
**EDCB20**



Example

