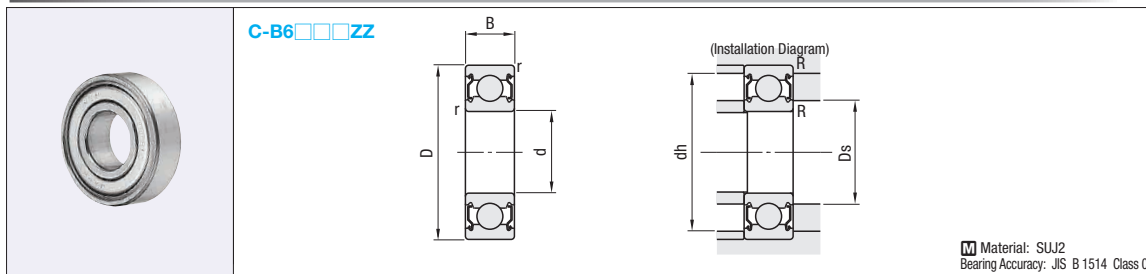


MISUMI C-VALUE [Medium Accuracy] Deep Groove Ball Bearings Double Shielded

Similar Products Page **P.991**

Similar Products Comparison Points | Products designed for light load, intermediate and low rotation speed, and medium rotational accuracy applications. See P. 987 for the description of C-VALUE Products.



Material: SUJ2
Bearing Accuracy: JIS B 1514 Class 0

For details on the tolerance and allowable values of inner and outer rings, **P.2243**

Part Number	d	D	B	r (min)	C-VALUE Products Check Point ①		Allowable Rotational Speed rpm (Reference)	Relative Dimensions				Mass (g) (Reference)	Unit Price
					Basic Load Rating			Ds		dh (max)	R (max)		
					Cr (Dynamic) kN	Cor (Static) kN		(min)	(max)				
C-B6700ZZ	10	15	4	0.2	0.6	0.3	15000	10.4	11.21	14.2	0.2	2	
C-B6800ZZ		19	5	0.3	1.28	0.65	34000	12	12.5	17	0.3	5	
C-B6900ZZ		22	6		1.89	0.89	32000		13	20		9	
C-B6000ZZ		26	8		3.19	1.37	30000		12	13.5		24	19
C-B6200ZZ		30	9	0.6	3.57	1.67	24000	14	16	26	0.6	32	
C-B6300ZZ		35	11		5.74	2.45	21000		16.5	31		52	
C-B6701ZZ	12	18	4	0.2	0.64	0.37	13000	12.4	13.86	16.7	0.2	3	
C-B6801ZZ		21	5	0.3	1.34	0.73	32000	14	14.5	19	0.3	6	
C-B6901ZZ		24	6		2.02	1.02	30000		15	22		11	
C-B6001ZZ		28	8		3.57	1.67	27000		16	26		21	
C-B6201ZZ		32	10	0.6	4.27	1.93	22000	16	17	28	0.6	37	
C-B6301ZZ		37	12	1	6.79	2.94	19000	17	18	32	1	60	
C-B6702ZZ	15	21	4	0.2	0.66	0.41	11000	15.4	16.86	19.7	0.2	4	
C-B6802ZZ		24	5	0.3	1.46	0.88	27000	17	17.5	22	0.3	7	
C-B6902ZZ		28	7		2.56	1.4	26000		19	26		16	
C-B6002ZZ		32	9		3.92	1.98	23000		19	30		30	
C-B6202ZZ		35	11	0.6	5.43	2.52	19000	19	20	31	0.6	45	
C-B6302ZZ		42	13	1	7.98	3.82	17000	20	22.5	37	1	83	
C-B6703ZZ	17	23	4	0.2	0.7	0.46	9500	17.4	18.86	21.1	0.2	4	
C-B6803ZZ		26	5	0.3	1.56	1.02	25000	19	19.5	24	0.3	8	
C-B6903ZZ		30	7		3.26	1.81	23000		20	28		18	
C-B6003ZZ		35	10		4.76	2.35	20000		21	33		39	
C-B6203ZZ		40	12	0.6	6.72	3.22	17000	21	23	36	0.6	66	
C-B6303ZZ		47	14	1	9.45	4.59	15000	22	25.5	42	1	113	
C-B6704ZZ	20	27	4	0.2	0.73	0.51	8500	20.4	22.36	25.5	0.2	6	
C-B6804ZZ		32	7	0.3	2.8	1.73	20000	22	22.5	30	0.3	19	
C-B6904ZZ		37	9		4.48	2.59	19000		24	35		36	
C-B6004ZZ		42	12		6.58	3.54	17000		24	26		38	0.6
C-B6204ZZ		47	14	1	8.96	4.66	14000	25	42	42	1	106	
C-B6304ZZ		52	15	1.1	11.13	5.53	13000	26.5	28	45.5	1	145	
C-B6805ZZ	25	37	7	0.3	3.01	2.07	18000	27	35	0.3	22		
C-B6905ZZ		42	9		4.94	3.19	16000		29		40	42	
C-B6005ZZ		47	12		7.07	4.1	15000		29		30.5	43	0.6
C-B6205ZZ		52	15	1	9.8	5.5	12000	30	32	47	1	128	
C-B6305ZZ		62	17	1.1	14.84	7.63	11000	31.5	36	55.5	1	235	
C-B6006ZZ		30	55	13	1	9.24	5.81	12000	35	37	1	116	
C-B6206ZZ	62		16	13.65		7.91	10000	39		57		199	
C-B6808ZZ	40	52	7	0.3	3.57	3.08	12000	42	43	50	0.3	33	

kgf=Nx0.101972

C-VALUE Products Check Point ②

I.D. d (mm) over or less	Clearance of MISUMI Similar Products (µm)		Clearance of C-VALUE Products (µm)	
	Min.	Max.	Min.	Max.
10 only	2	13	4	18
10	3	18	6	23
18	5	20	8	25
24	5	20	8	25

<Precautions for Use of C-VALUE Products>

- This product is C-VALUE Product. For detailed description of C-VALUE Products, see **P.987**. For similar products of this product, see the left page.
- This is a product designed exclusively for light load, intermediate and low rotation speeds, and medium rotational accuracy applications.
 - Be sure to read the C-VALUE Products Check Point ① and ② before using this product. The internal clearance and the load rating of this product are different from that of normal similar products.
 - Do not use in areas with heavy load, high speed, or that requires high rotational accuracy.



Ordering Example

Part Number
C-B6001ZZ